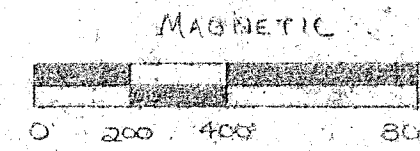
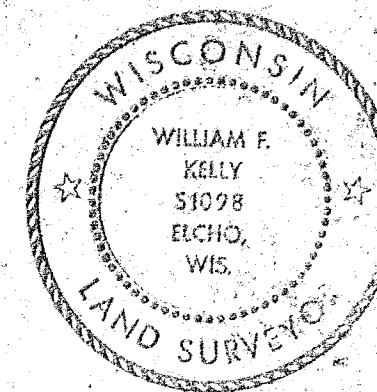


SUBDIVISION OF SECTION 36
T32N, R11E
TOWN OF NEVA, LANGLADE COUNTY,
WISCONSIN
FOR TOM GALLENBERG



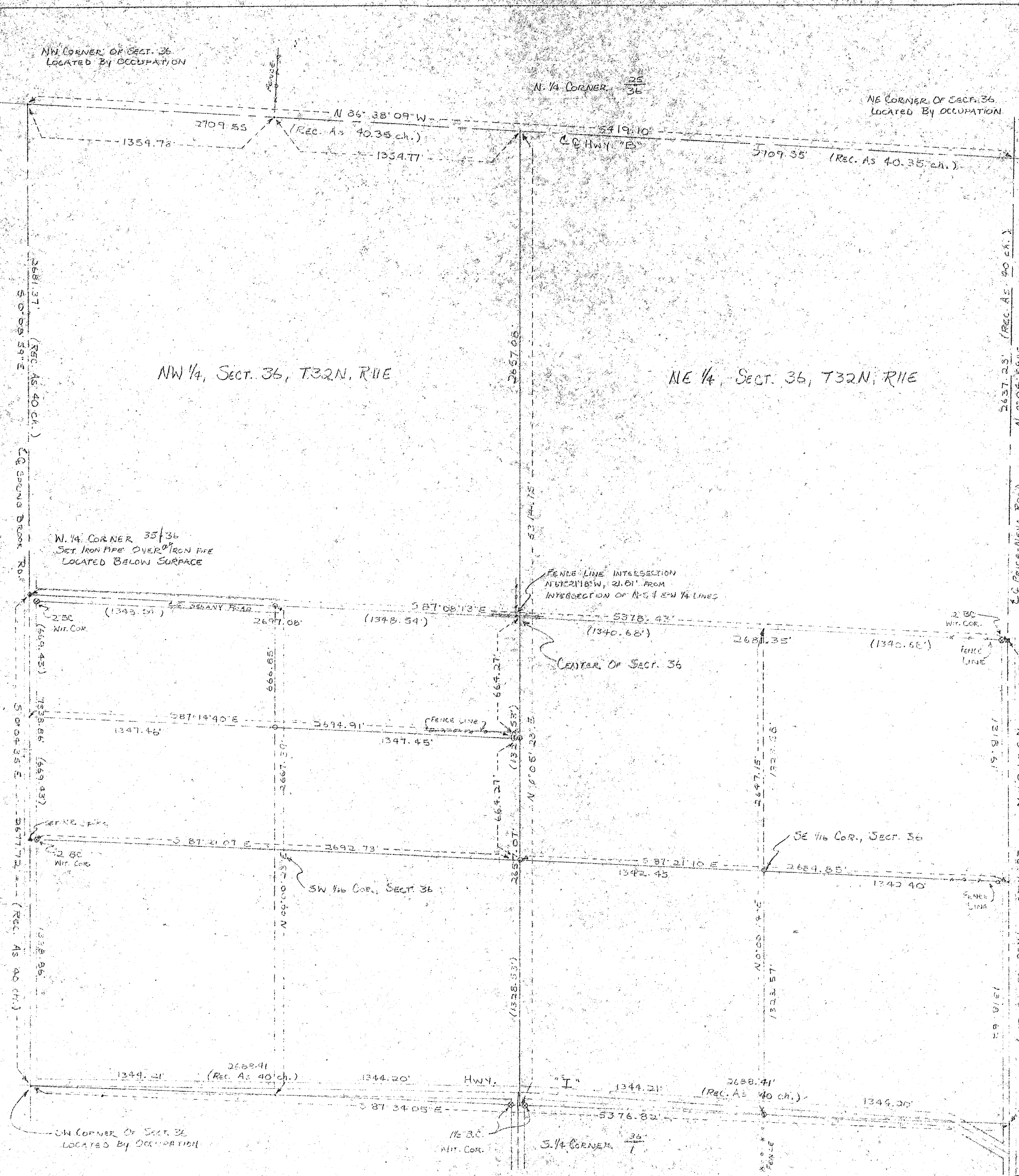
SCALE: 1" = 400'

- LEGEND:
- IRON PIPE, SET
 - IRON PIPE, FOUND IN PLACE
 - IRON BAR, FOUND IN PLACE
 - ⊗ BRASS CAP WITNESS MONUMENT, SET



William F. Kelly
8-26-82

BUILDERS SERVICE ENGINEERING DIVISION	
MAP OF SURVEY	
FOR	
TOM GALLENBERG	
DRAWN BY: LISA MEYER	CK. W.F. KELLY
SCALE 1" = 400'	DATE August 11, 1982
SHEET 1 OF 1	DWG. NO: 1014



RECORD # 30-240
LANGLADE COUNTY SURVEYORS OFFICE
DATE FILED: 6-3-93 BY: SJF