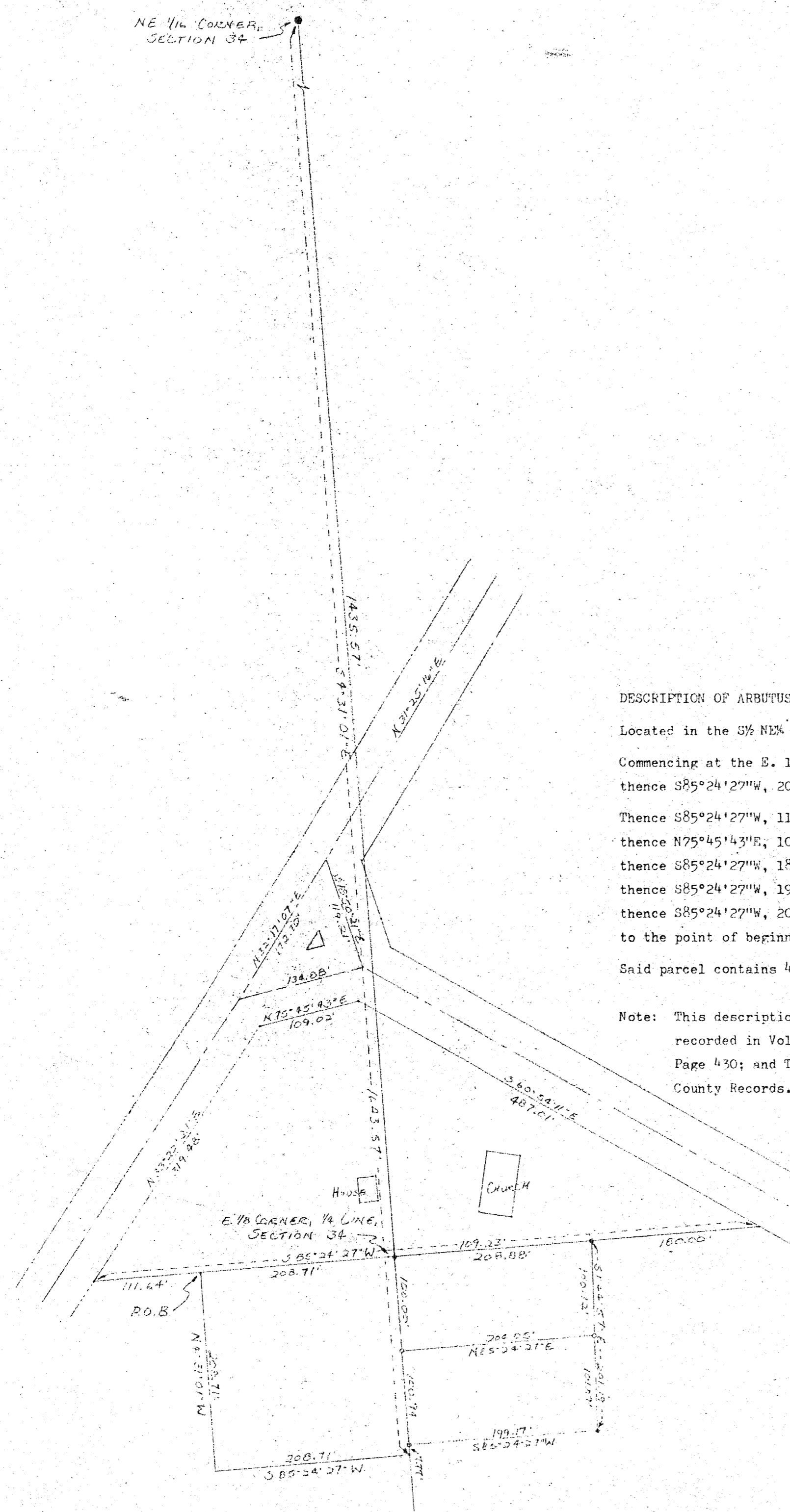


NE 1/4 CORNER, SECTION 34

ARBUTUS ENGLISH EVANGELICAL LUTHERAN CHURCH

LOCATED IN THE NE 1/4 SE 1/4, SECTION 34, T34N, R12E, TOWN OF AINSWORTH, LANGLADE COUNTY, WI

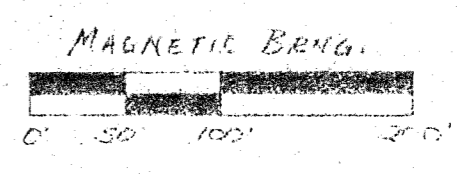
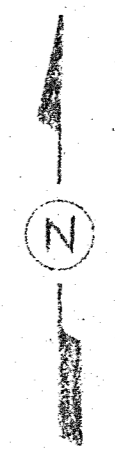


DESCRIPTION OF ARBUTUS CHURCH PROPERTY:

Located in the S 1/2 NE 1/4 and the N 1/2 SE 1/4, Sect. 34, T34N, R12E. Commencing at the E. 1/8 corner on the E-W 1/4 line of said Sect. 34; thence S85°24'27\"W, 208.71 feet to the point of beginning; Thence S85°24'27\"W, 111.64 feet; thence N33°22'21\"E, 319.48 feet; thence N75°45'43\"E, 109.02 feet; thence S60°54'11\"E, 487.01 feet; thence S85°24'27\"W, 180.00 feet; thence S01°44'57\"E, 201.19 feet; thence S85°24'27\"W, 199.17 feet; thence S04°31'01\"E, 7.77 feet; thence S85°24'27\"W, 208.71 feet; thence N04°31'01\"W, 208.71 feet to the point of beginning.

Said parcel contains 4.41 acres.

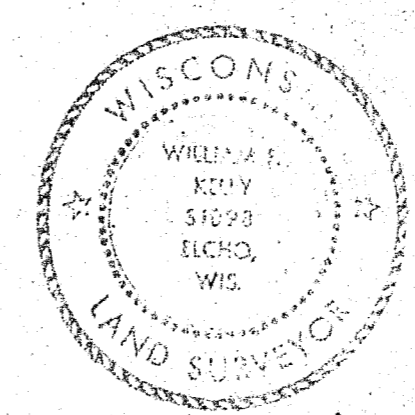
Note: This description intends to consolidate the descriptions recorded in Vol. 353, Page 777; Vol. 155, Page 377; Vol. 248, Page 430; and Tax description no. 1100.01, of Langlade County Records.



SCALE: 1"=100'

LEGEND.

- IRON PIPE, SET
- IRON PIPE, FOUND IN PLACE
- 6" ROUND CEDAR POST, FOUND IN PLACE



William D. Kelly
6-30-64

BUILDERS SERVICE ENGINEERING DIVISION	
ARBUTUS CHURCH	
SECT. 34, T34N, R12E	
AINSWORTH	
DRAWN BY: LISA MEYER	
SCALE 1"=100'	DATE JUNE 13, 1964
SHEET 1 OF 1	DWG. NO: 1280

RECORD # 30250
LANGLADE COUNTY SURVEYORS OFFICE
DATE FILED: 6/14/63 BY: DT.