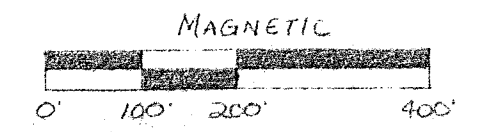
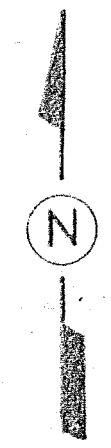


MAP OF SURVEY

FOR:
RANDY & JANE BABLER

LOCATED IN THE SW 1/4, SECT. 36, T32N, R11E,
TOWN OF NEVA, LANGLADE COUNTY, WI



SCALE: 1" = 200'

LEGEND

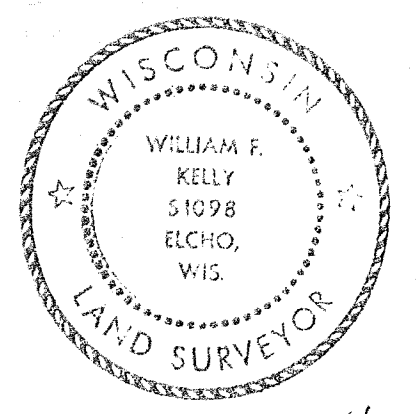
- IRON PIPE, SET
- R.R. SPIRE, FOUND IN PLACE
- ▲ NAIL, FOUND IN PLACE

RECORD # 30259

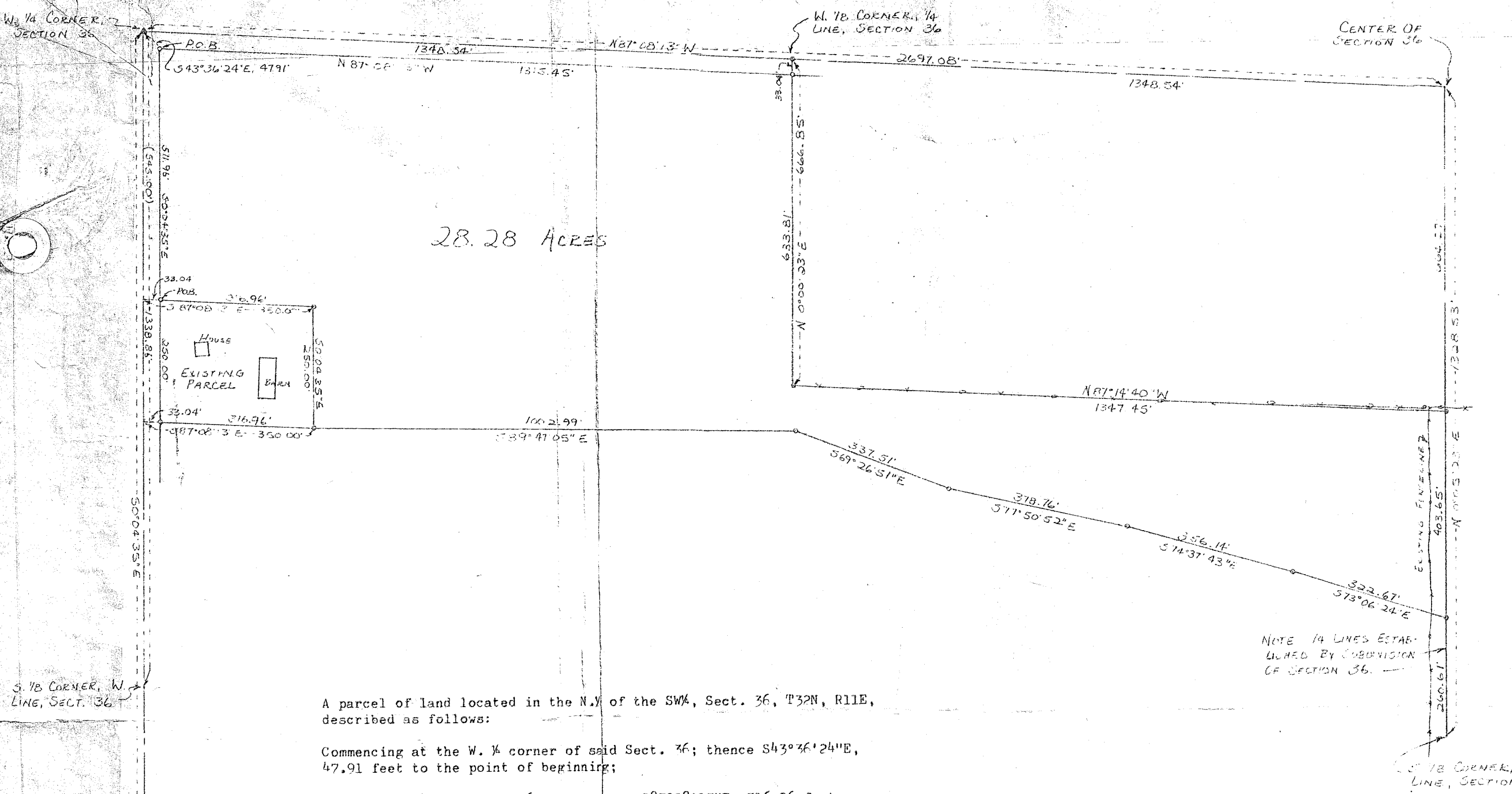
LANGLADE COUNTY SURVEYORS OFFICE

DATE FILED: 2/29/06 BY: D. Kelly

BUILDERS SERVICE ENGINEERING DIVISION	
- MAP OF SURVEY	
FOR:	
RANDY & JANE BABLER	
DRAWN BY: LISA REYNOLDS	
SCALE: 1" = 200'	DATE: JUNE 13, 2006
SHEET: 1 OF 1	DWG. NO: 1653



William F. Kelly
6-13-06



28.28 ACRES

A parcel of land located in the N.W. of the SW 1/4, Sect. 36, T32N, R11E, described as follows:

Commencing at the W. 1/4 corner of said Sect. 36; thence S43°36'24"E, 47.91 feet to the point of beginning;

Thence S00°04'35"E, 511.96 feet; thence S87°02'13"E, 316.96 feet; thence S00°04'35"E, 250.00 feet; thence S89°47'05"E, 1002.99 feet; thence S69°26'51"E, 337.51 feet; thence S77°50'52"E, 378.76 feet; thence S74°37'43"E, 356.14 feet; thence S73°06'24"E, 322.67 feet; thence N00°05'23"E, 403.65 feet; thence N87°14'40"W, 1347.45 feet; thence N00°00'23"E, 633.81 feet; thence N87°08'13"W, 1315.45 feet to the point of beginning.

Said parcel contains 28.28 acres.

S. 1/4 CORNER, W. LINE, SECT. 36

SW CORNER, SECTION 36