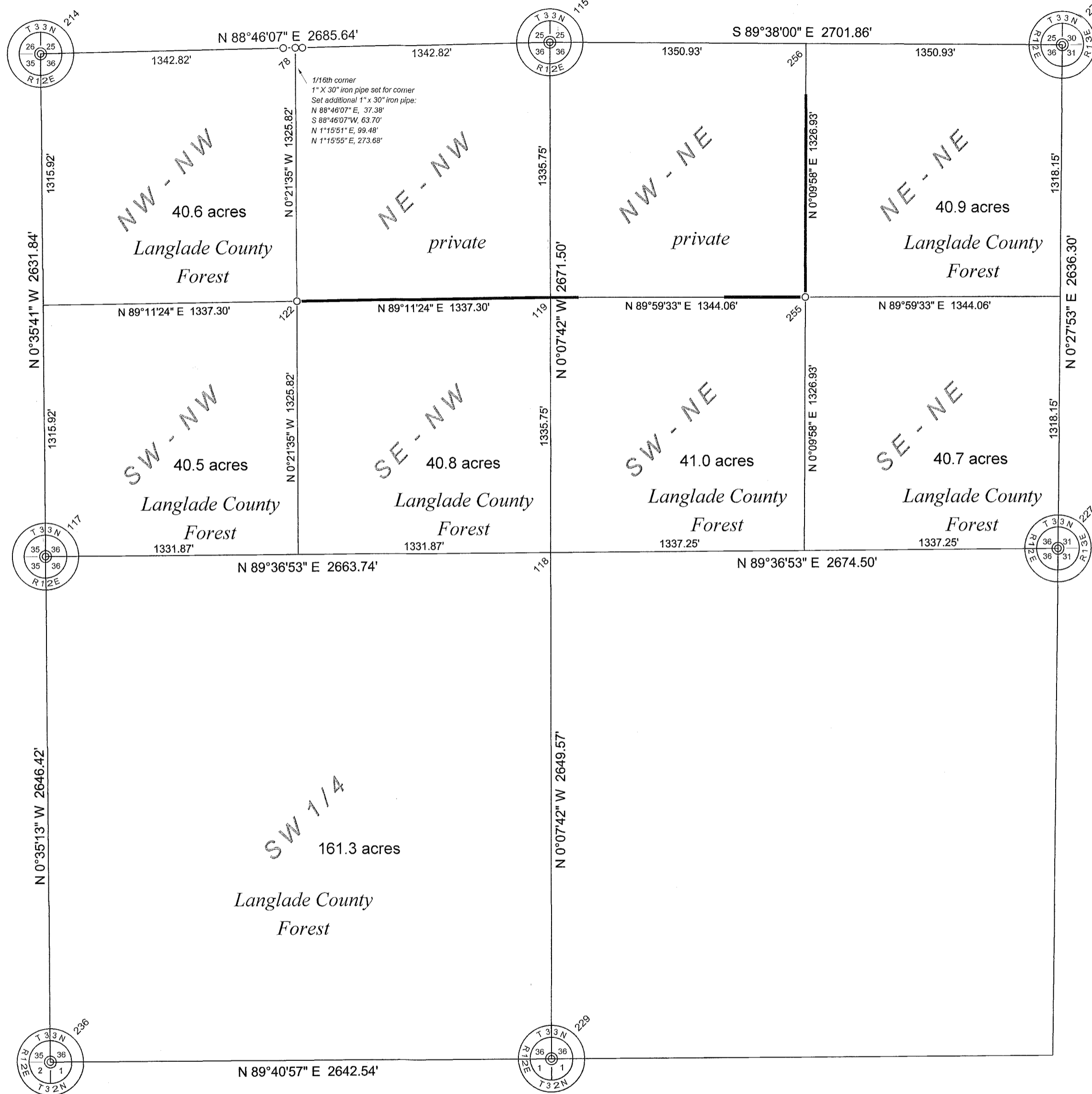


Section 36, Township 33 North, Range 12 East

LANGLADE COUNTY COORDINATE SYSTEM GRID BEARINGS SHOWN



SURVEY COMMENTS

The coordinate values of the NW, NE and W1/4 corners have been obtained by a field angle traverse with a total station, starting at static or RTK GPS control points near each corner. The coordinate values for the SW, E1/4, N1/4 and the S 1/4 corners were obtained by direct, repeat RTK GPS observations directly over each monument.

Coordinates shown are Langlade County Coordinates, NAD83(2011) datum. Bearings shown are Langlade County Coordinate System grid bearings. Bearing trees have a "Bearing Tree" sign facing the corner and have been measured to an aluminum nail in a side blaze on the right side of the tree as viewed from the corner monument.

PNO	N	E	Description
78	400858.9322	674428.3588	w1/16th
115	400887.7880	675770.8630	s1/4x s25 4" ip bc
117	398198.3847	673113.1669	4" mon fnd 1/4 corner
118	398216.2998	675776.8431	ctr s36
119	399552.0439	675773.8530	cn16th x s36
122	399533.1373	674436.6819	nw16th ip set
214	400830.0765	673085.8547	swx s25 4" ip bc good
227	398234.2873	678451.2887	1623.1 4 IN MON FND
229	395566.7363	675782.7741	1610.6 4 IN MON FND
236	395552.0990	673140.2764	1609.6 4 IN MON FND
255	400879.1448	677121.7660	16TH COR CALC
256	399552.2192	677117.9160	16TH COR 1" ip set
278	400870.5017	678472.6690	4IN IP BCAP FND

A green, steel channel sign post with a "Langlade County Forest" sign has been set within 0.5' of each pipe or rebar set.

- 1" x 30" iron pipe set.
- line flagged, to be painted blue by Forestry Dept.

THIS DOCUMENT WAS CREATED ON LANGLADE COUNTY COMPUTER EQUIPMENT THAT WAS PURCHASED WITH THE ASSISTANCE OF A GRANT RECEIVED FROM THE WISCONSIN LAND INFORMATION BOARD.

**LANGLADE COUNTY**  
LAND RECORDS & REGULATIONS DEPARTMENT

SCALE:	1" = 500'
DRAWN BY:	D. TLUSTY
REF. FILE:	
DATE:	03/20/2014
TOWN OF:	AINSWORTH
TOWN CODE:	
LOCATION:	
SECTION:	36
TOWNSHIP:	33
RANGE:	12
DWG. #:	..363312

I, David E. Tlusty, Langlade County Surveyor, do hereby certify that by the direction of Erik Rantala, Langlade County Forest Administrator, I have made a survey of part of Section 36, T.33 N., R.12 E., Town of Ainsworth, as shown hereon. I further certify that this map is a true and correct representation of said survey, and that this survey is correct to the best of my knowledge and belief. Corner restoration forms are on file for all monumented corners shown.

David E. Tlusty, S-1390  
Langlade County Surveyor

3/28/2014

DAVID E. TLUSTY  
S-1390  
Deerbrook WI  
REGISTERED LAND SURVEYOR

RECORD # 30264  
LANGLADE COUNTY SURVEYORS OFFICE  
DATE FILED: 3/28/2014 BY: D. TLUSTY

NO.	DATE	DESCRIPTION	BY