

E. 1/2 CORNER,
ON E-W 1/4 LINE,
SEC. 13

E. 1/4 CORNER,
SEC. 13

MAP OF SURVEY

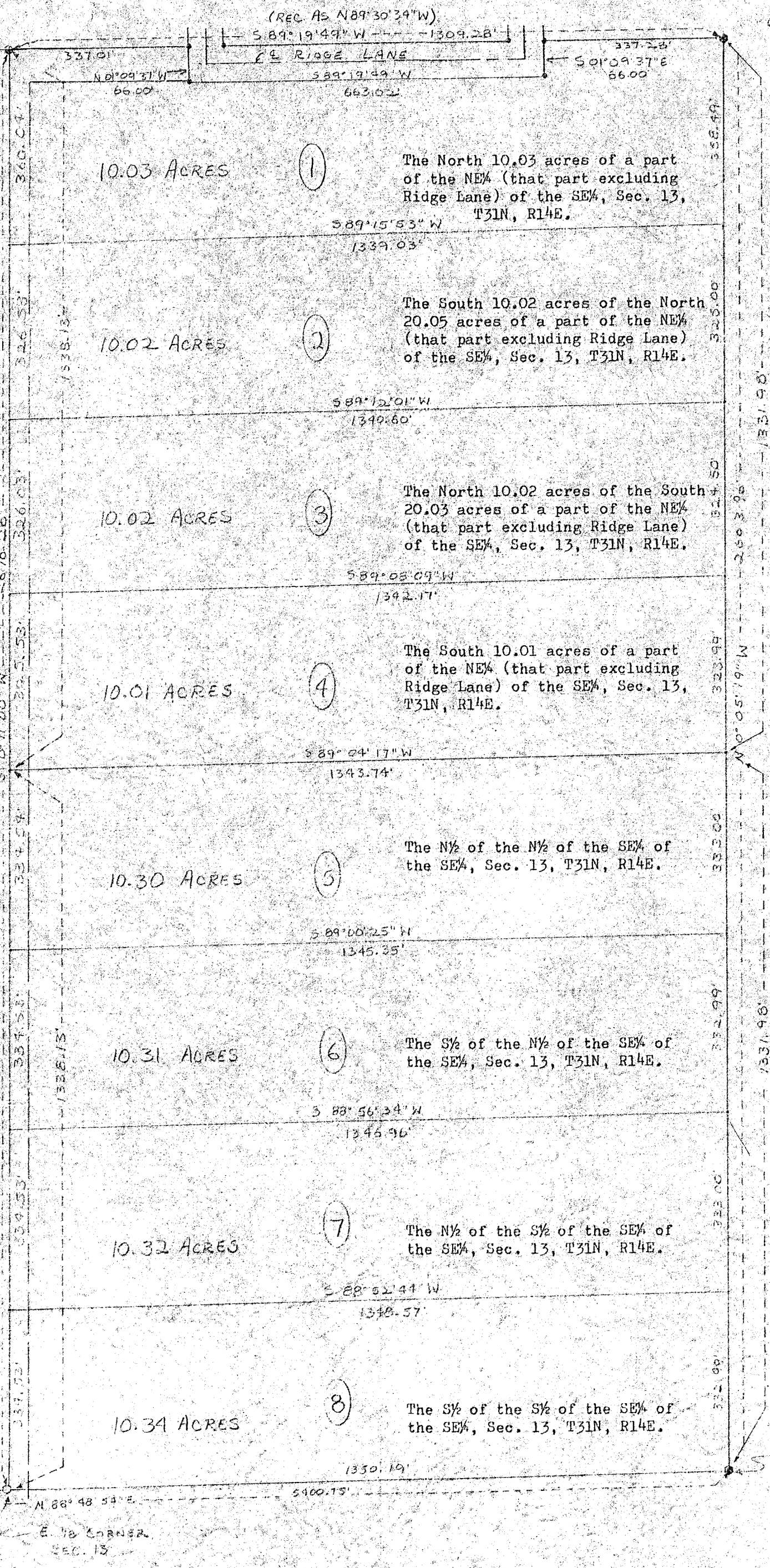
FOR

BILL DOEMEL

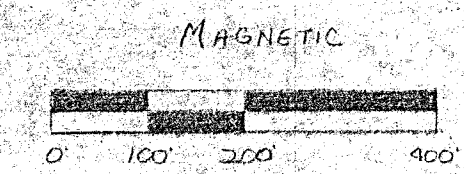
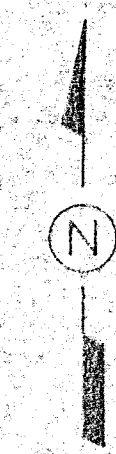
OF THE

E 1/2 SE 1/4, SEC. 13, T31N, R14E

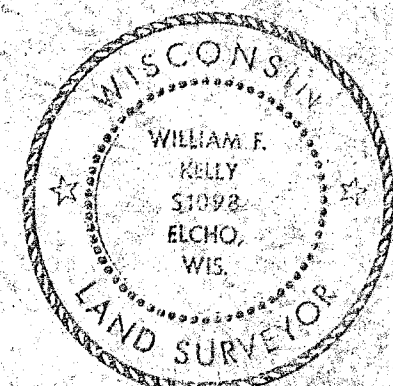
TOWN OF WOLF RIVER, LANGLADE CO., WI



- LEGEND:
- IRON PIPE, FOUND IN PLACE
 - BRASS CAP MON., FOUND IN PLACE
 - BRASS CAP MON., SET



SCALE: 1"=200'



William F. Kelly

RECORD # 30284
 LANGLADE COUNTY SURVEYORS OFFICE
 DATE FILED: _____ BY: _____

BUILDERS SERVICE ENGINEERING DIVISION	
BILL DOEMEL	
E 1/2 SE 1/4	
SEC. 13, T31N, R14E	
DRAWN BY: LISA MEYER, CK. W.F. KELLY	
SCALE: 1"=200'	DATE: SEPT. 25, 1981
SHEET: 1 OF 1	DWG. NO: 814