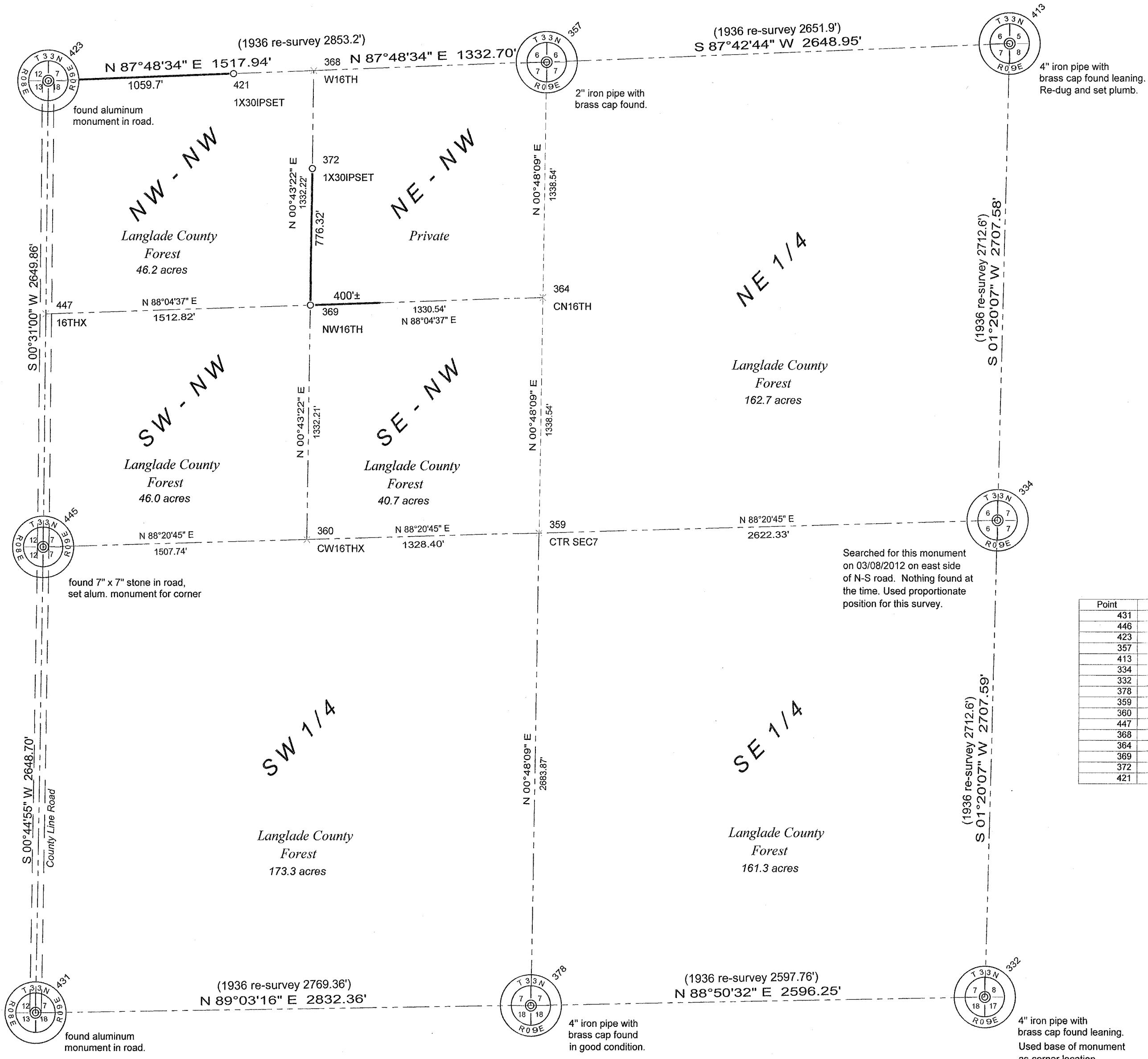


Section 7, Township 33 North, Range 9 East



Point	Northing	Easting	Description
431	417466.600	550444.900	2 ALUM MON FND3XRTK
446	420115.072	550479.506	qc IPAL CAPSET3XRTK
423	422764.800	550503.400	2 MON IN RD2XRTK
357	422873.763	553351.958	2 QC2INIPBC:11102016
413	422979.500	555998.800	2 SC AVE2SHOTS
334	420272.650	555935.700	1-4COR SPM NOT MON
332	417565.800	555872.600	RTK LEANING 4IN MON FND liesRe
378	417513.343	553276.877	IP BC FND2XRTK:11092016
359	420196.947	553314.465	CTR SEC7
360	420158.598	551986.615	CW16THX
447	421439.934	550491.453	16THX
368	422822.822	552020.232	W16TH
364	421535.355	553333.212	CN16TH
369	421490.703	552003.424	NW16TH
372	422266.938	552013.229	1X30IPSET
421	422805.502	551562.313	1X30IPSET

SURVEY COMMENTS

The NW and SW corners are aluminum monuments in the road. The North quarter corner, the South quarter corner and the Northeast corner are 4" concrete filled iron pipes with brass tablets, all in good condition. The West quarter corner is a newly planted iron pipe with brass cap, set at the base of an existing stone monument and 33.0' west of existing witness monument. The Southeast corner coordinates are at the base of leaning 1930's survey monument that was visited in March, 2013 when it was frozen solid in place. The East quarter corner was searched for and not found in March, 2013 and was not reset for this survey. Coordinates for the SW, W1/4, NW, N1/4 and S1/4 are all from averaged, multiple RTK observations. The NE corner coordinates are based on very short conventional traverse work from RTK control pair just to the east of the corner.

Coordinates shown are Langlade County Coordinates, NAD(83)2011 datum. Bearings shown are Langlade County Coordinate System grid bearings. Add (clockwise) 2° to the bearings shown to get approximate magnetic bearings.

- 1" ID x 36" iron pipe set. Marked with steel sign post.
- 3/4" rebar found
- boundary line flagged and painted blue, Nov. 2016

I, David E. Tlusty, Langlade County Surveyor, do hereby certify that by the direction of Erik Rantala, Langlade County Forest Administrator, I have made a survey of part of Section 7, T.33 N., R.9 E., Town of Summitt, as shown hereon. I further certify that this map is a true and correct representation of said survey, and that this survey is correct to the best of my knowledge and belief.

December 15, 2016
 David E. Tlusty, S-1390
 Langlade County Surveyor

Revised 10/23/18 to reflect minor revision of W1/4 coordinates.

RECORD # 30287
 LANGLADE COUNTY SURVEYORS OFFICE
 DATE FILED: 10/23/19 BY: D. Tlusty



<p>THIS DOCUMENT WAS CREATED ON LANGLADE COUNTY COMPUTER EQUIPMENT THAT WAS PURCHASED WITH THE ASSISTANCE OF A GRANT RECEIVED FROM THE WISCONSIN LAND INFORMATION BOARD.</p> <p style="text-align: center;">LANGLADE COUNTY LAND RECORDS & REGULATIONS DEPARTMENT</p>	<table border="1" style="width: 100%; border-collapse: collapse;"> <tr> <th style="width: 10%;">NO.</th> <th style="width: 10%;">DATE</th> <th style="width: 30%;">DESCRIPTION</th> <th style="width: 10%;">BY</th> <th style="width: 10%;">REVISIONS</th> </tr> <tr> <td style="text-align: center;">1</td> <td></td> <td></td> <td></td> <td></td> </tr> </table>	NO.	DATE	DESCRIPTION	BY	REVISIONS	1				
NO.	DATE	DESCRIPTION	BY	REVISIONS							
1											
<p>SCALE: 1" = 500'</p> <p>DRAWN BY: D. TLUSTY</p> <p>PacSoft prj: SUMMIT Fb 24-27</p> <p>DATE: 12/15/2016</p> <p>TOWN OF: SUMMITT</p> <p>TOWN CODE:</p> <p>LOCATION:</p> <p>SECTION: 7</p> <p>TOWNSHIP: 33</p> <p>RANGE: 9</p> <p>DWG. #: .073309</p>											