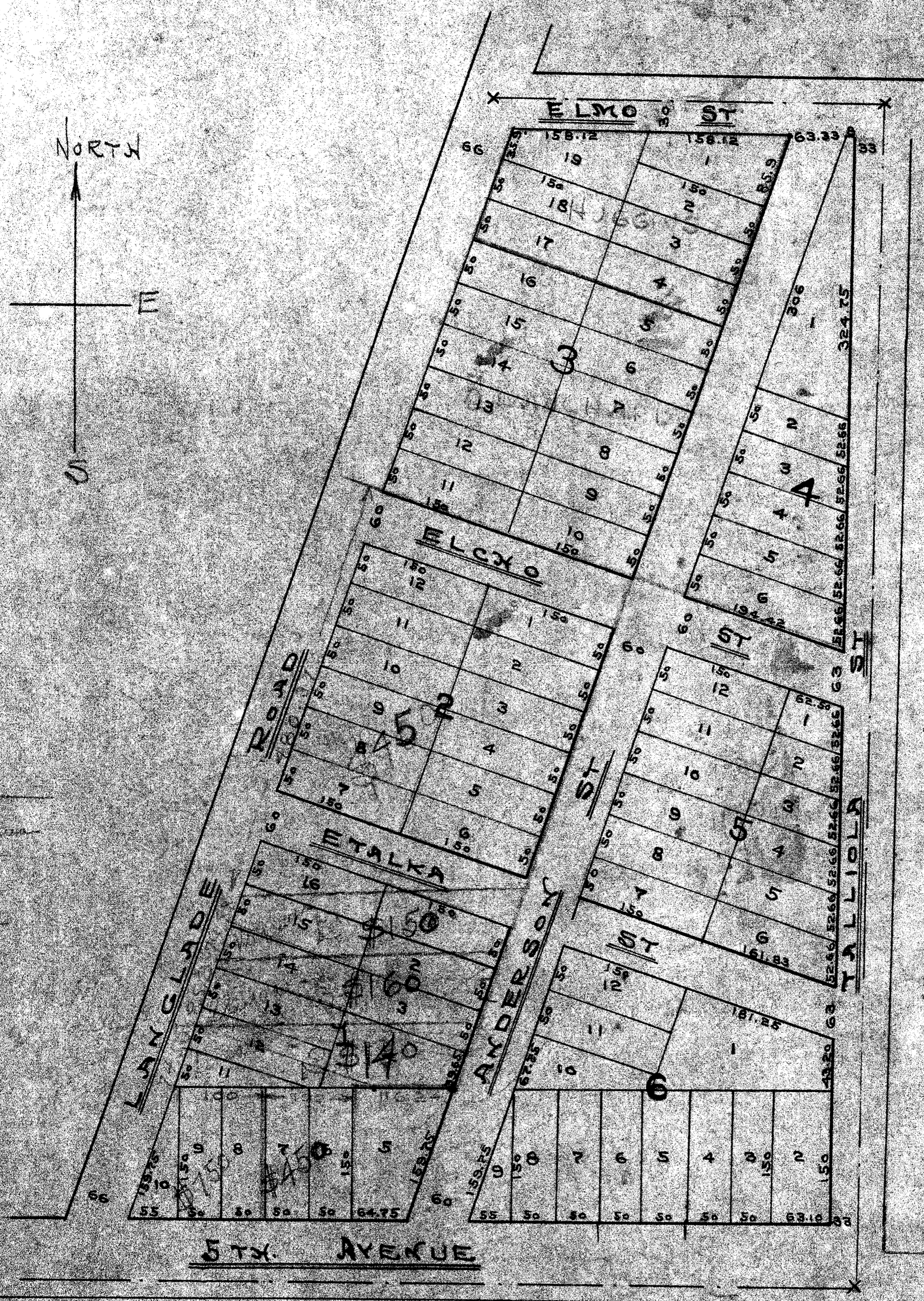
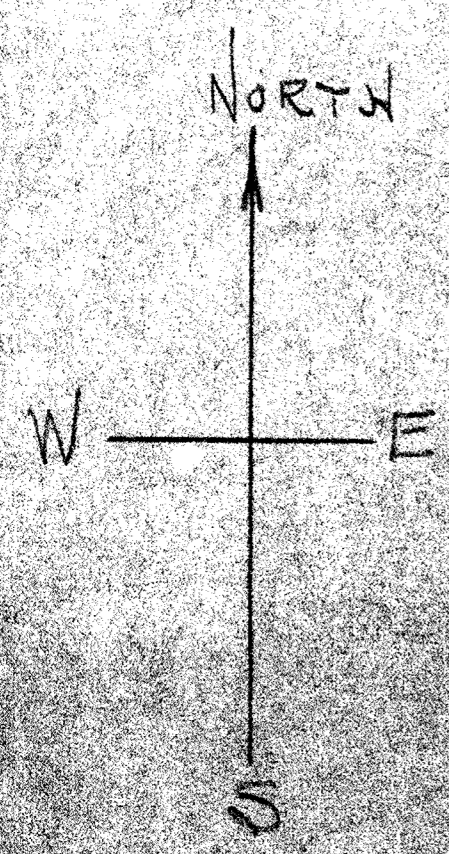


38

ANDERSON'S ADDITION

38



38

Now Part of Antico Ass. Plat
 " " " Schaller-Barnes Subd.
 " " " Ballas Subdivision

RECORD # 30336
 LANGLADE COUNTY SURVEYORS OFFICE
 DATE FOR MAP 6/8/73 BY: DJ

138