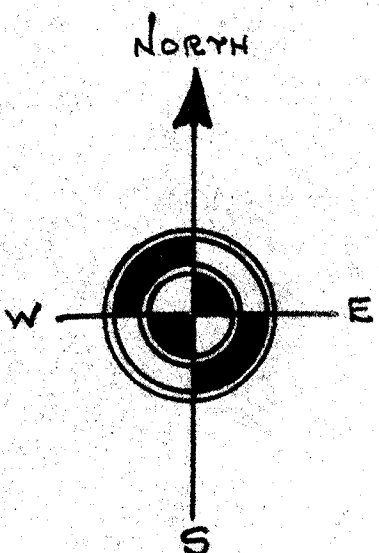


**SUPERIOR ST**

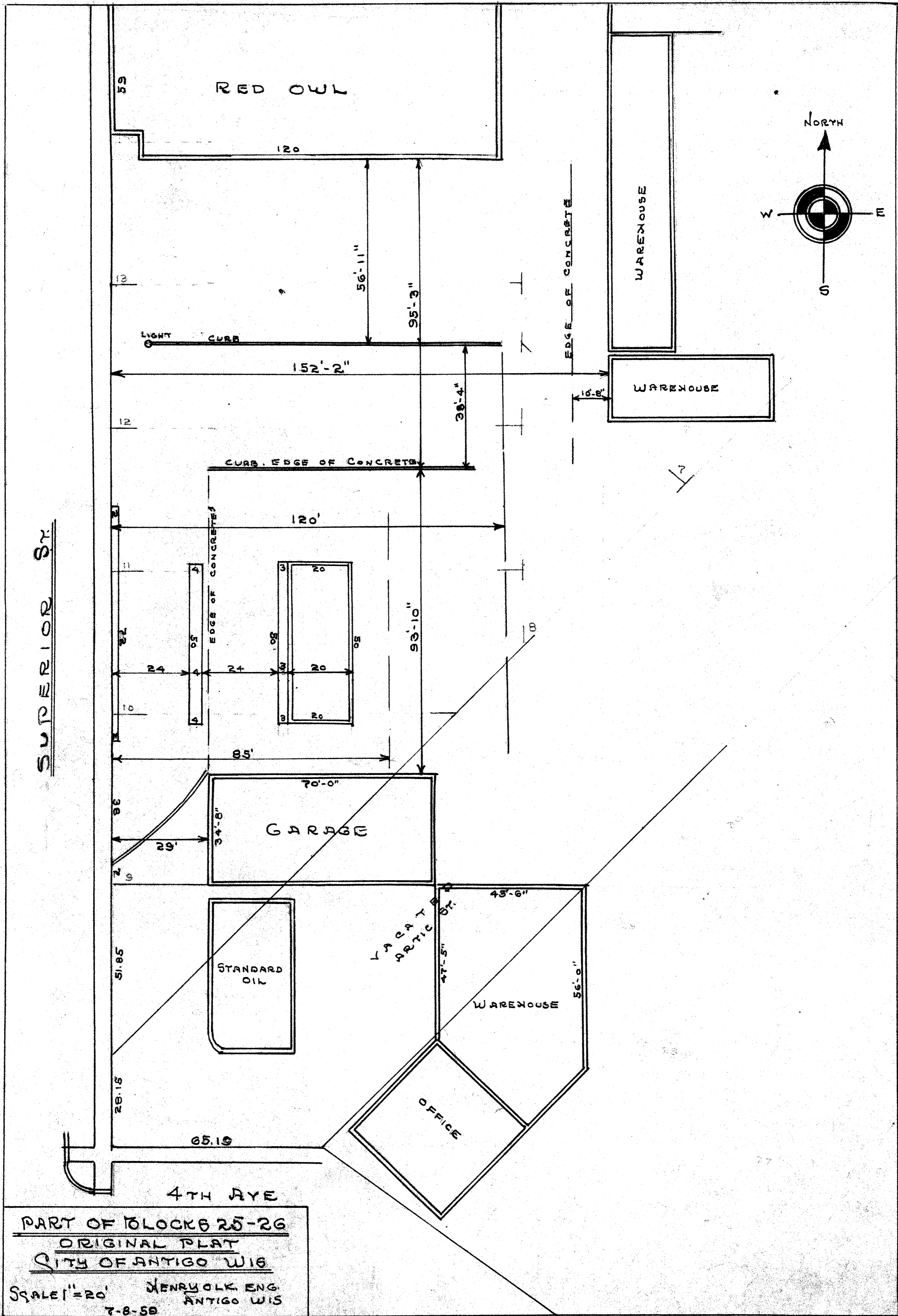
**4TH AVE**

**PART OF BLOCKS 25-26  
ORIGINAL PLAT  
CITY OF ANTIGO WIS**  
SCALE 1" = 20' HENRY OLK ENG.  
ANTIGO WIS 7-8-59



RECORD # 30397 (EXTRA)  
LANGLADE COUNTY SURVEYORS OFFICE  
DATE FILED: BY:

135



RECORD # 30339  
 LANGRISH COUNTY SURVEYORS OFFICE  
 DATE FILED: 6/8/93 BY: DT.

PART OF BLOCKS 25-26  
 ORIGINAL PLAT  
 CITY OF ANTIGO WIS  
 SCALE 1" = 20' HENRY OLK ENG.  
 ANTIGO WIS  
 7-8-59

135  
 135