

DESCRIPTION OF LAND.

THAT PART OF LOTS 6-7 LYING S. OF THE RY. RT. OF WAY. LOTS 8 TO 12 INC. PART OF LOT 13 - COMMENCING AT THE INTERSECTION OF THE EAST LINE OF LOT 13 WITH THE SOUTH LINE OF RY. RT. OF WAY, THENCE S. 40, TH. W. 20, TH. N. TO THE SOUTH LINE OF RY. RT. OF WAY, THENCE N.E. ALONG S. LINE OF RY. RT. OF WAY TO PLACE OF BEGINNING. ALL IN BLOCK 83 ORIGINAL PLAT. CITY OF ANTIGO WIS.

NO ENCROACHMENTS
 NO POLES OR MANHOLES ON PROPERTY
 NO DITCHES OR STREAMS.
 NO EASEMENTS.

I, CERTIFY THAT I HAVE SURVEYED THE ABOVE DESCRIBED PROPERTY AND THAT THE ANNEXED PLAT IS AN ACCURATE SURVEY AND A TRUE REPRESENTATION THEREOF AND CORRECTLY SHOWS THE EXTERIOR BOUNDARY LINES AND LOCATION OF BUILDINGS AND OTHER IMPROVEMENTS ON SAID PROPERTY AND THE CORRECT MEASUREMENTS THEREOF.

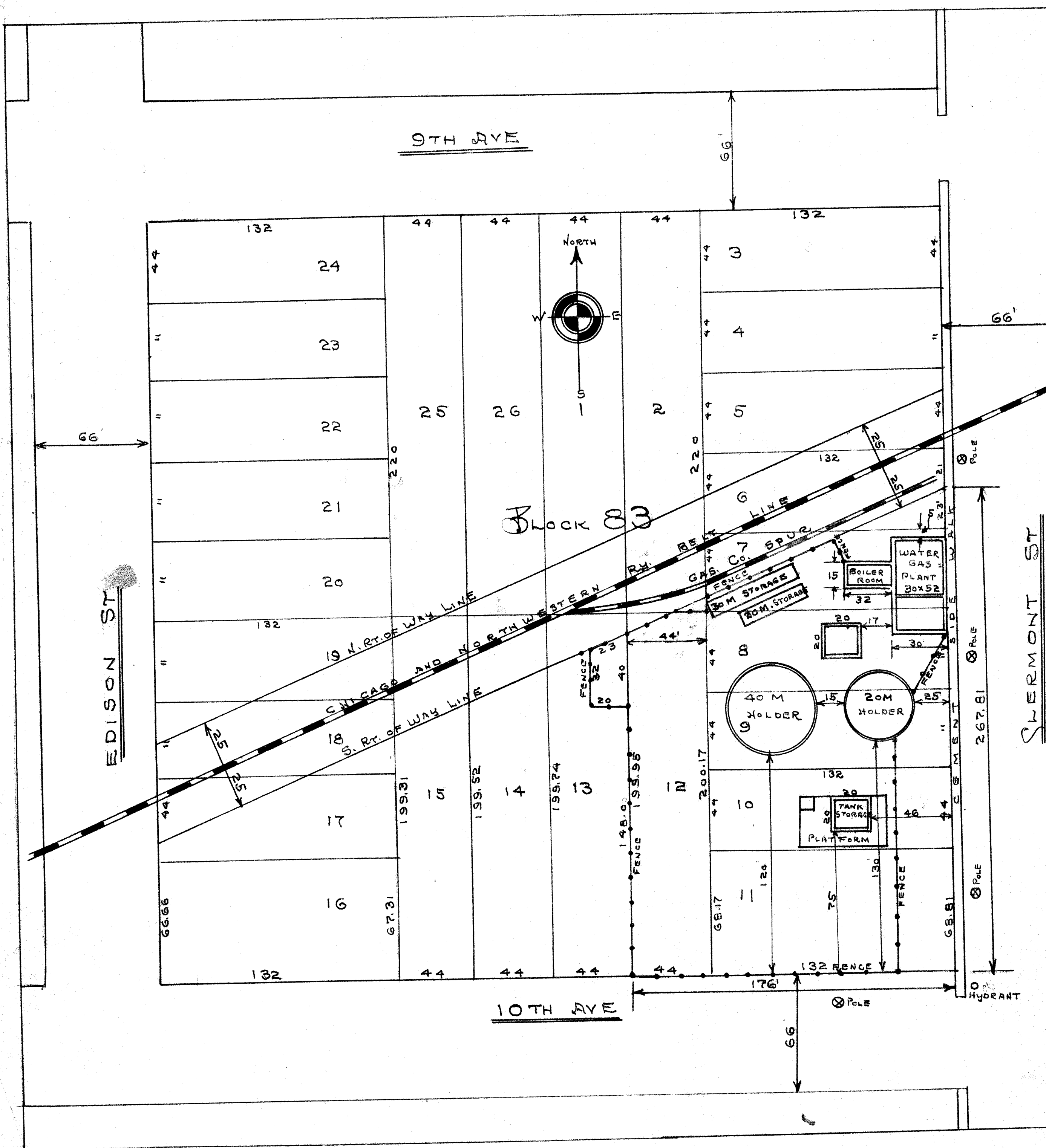
Henry O. K.

SURVEYOR. S. 657

ANTIGO WIS. AUGUST 22, 1960

CITY GAS CO.
LAND
ANTIGO WIS.
 SCALE 1" = 40' HENRY O. K. ENG.
 8-22-60 ANTIGO WIS.

RECORD # 30340
 LANGLADE COUNTY SURVEYORS OFFICE
 DATE FILED: 6/8/93 BY: DT



DESCRIPTION OF LAND.

THAT PART OF LOTS 6-7 LYING S. OF THE RY. RT. OF WAY. PARTS 6 TO 12 INC. PART OF LOT 13 - COMMENCING AT THE INTERSECTION OF THE EAST LINE OF LOT 13 WITH THE SOUTH LINE OF RY. RT. OF WAY, THENCE S. 40, TH. W. 20, TH. N. TO THE SOUTH LINE OF RY. RT. OF WAY, THENCE N.E. ALONG S. LINE OF RY. RT. OF WAY TO PLACE OF BEGINNING. ALL IN BLOCK 83 ORIGINAL PLAT. CITY OF ANTIGO WIS.

NO ENCROACHMENTS
 NO POLES OR MANHOLES ON PROPERTY
 NO DITCHES OR STREAMS.
 NO EASEMENTS.

I, CERTIFY THAT I HAVE SURVEYED THE ABOVE DESCRIBED PROPERTY AND THAT THE ANNEXED PLAT IS AN ACCURATE SURVEY AND A TRUE REPRESENTATION THEREOF AND CORRECTLY SHOWS THE EXTERIOR BOUNDARY LINES AND LOCATION OF BUILDINGS AND OTHER IMPROVEMENTS ON SAID PROPERTY AND THE CORRECT MEASUREMENTS THEREOF.

Henry Olk
 SURVEYOR. S.657

ANTIGO WIS. AUGUST 22, 1960

CITY GAS CO.
LAND
ANTIGO WIS.
 SCALE 1" = 40' HENRY OLK. ENG.
 8-22-60 ANTIGO WIS.