

Section 25, Township 33 North, Range 12 East

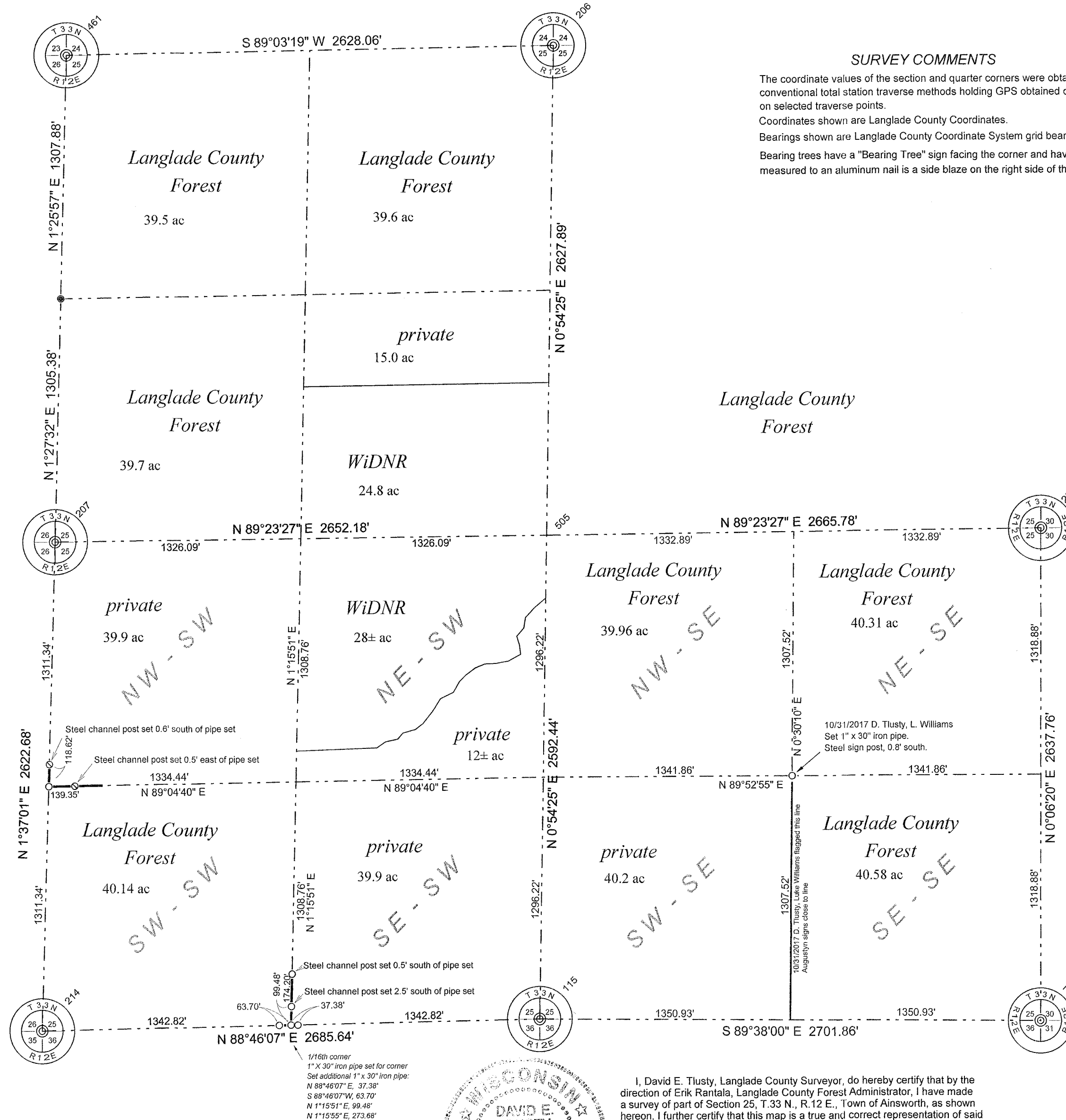
LANGLADE COUNTY COORDINATE SYSTEM GRID BEARINGS SHOWN

Langlade County coordinates NAD83(2011)

| PNO | N | E | Description |
|-----|------------|------------|--------------------|
| 71 | 400870.502 | 678472.669 | sc dt rtk |
| 115 | 400867.788 | 675770.863 | qc dt rtk |
| 203 | 403508.257 | 678477.532 | qc trav RTK dt |
| 206 | 406107.474 | 675853.493 | n1/4x 4inip bc fnd |
| 207 | 403451.709 | 673159.865 | qc dt RTK trav |
| 214 | 400830.076 | 673085.855 | sc trav GPS dt |
| 461 | 406064.140 | 673225.800 | 4INIPBCFND3XRTKAVE |
| 505 | 403479.911 | 675811.898 | ctr S25 |

A green, steel channel sign post with a "Langlade County Forest" sign has been set within 0.5' of each pipe or rebar set.

- 1" (ID) x 30" iron pipe set
- ⊙ 3/4" x 30" rebar set
- 2" iron pipe with brass cap found
- property line flagged and painted blue



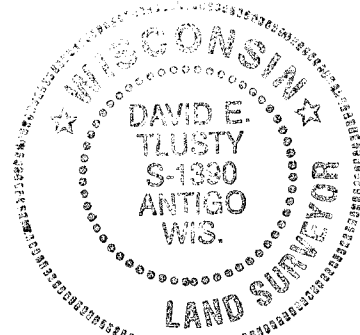
SURVEY COMMENTS

The coordinate values of the section and quarter corners were obtained by conventional total station traverse methods holding GPS obtained coordinates on selected traverse points.
 Coordinates shown are Langlade County Coordinates.
 Bearings shown are Langlade County Coordinate System grid bearings.
 Bearing trees have a "Bearing Tree" sign facing the corner and have been measured to an aluminum nail is a side blaze on the right side of the tree.

THIS DOCUMENT WAS CREATED ON LANGLADE COUNTY COMPUTER EQUIPMENT THAT WAS PURCHASED WITH THE ASSISTANCE OF A GRANT RECEIVED FROM THE WISCONSIN LAND INFORMATION BOARD.

LANGLADE COUNTY
 LAND RECORDS & REGULATIONS DEPARTMENT

| | |
|------------|--------------|
| SCALE: | 1" = 500' |
| DRAWN BY: | D. TLUSTY |
| REF. FILE: | Notes: FB 13 |
| DATE: | 12/01/08 |
| TOWN OF: | AINSWORTH |
| TOWN CODE: | |
| LOCATION: | |
| SECTION: | 25 |
| TOWNSHIP: | 33 |
| RANGE: | 12 |
| DWG. #: | ..253312 |



I, David E. Tlusty, Langlade County Surveyor, do hereby certify that by the direction of Erik Rantala, Langlade County Forest Administrator, I have made a survey of part of Section 25, T.33 N., R.12 E., Town of Ainsworth, as shown hereon. I further certify that this map is a true and correct representation of said survey, and that this survey is correct to the best of my knowledge and belief. Corner restoration forms are on file for all monumented corners shown.

David E. Tlusty, S-1390
 Langlade County Surveyor
 3/8/2020

RECORD # 30363
 LANGLADE COUNTY SURVEYORS OFFICE
 DATE FILED: 3/8/2020 BY: D. TLUSTY

| NO. | DATE | DESCRIPTION | BY |
|-----|------|-------------|----|
| | | | |