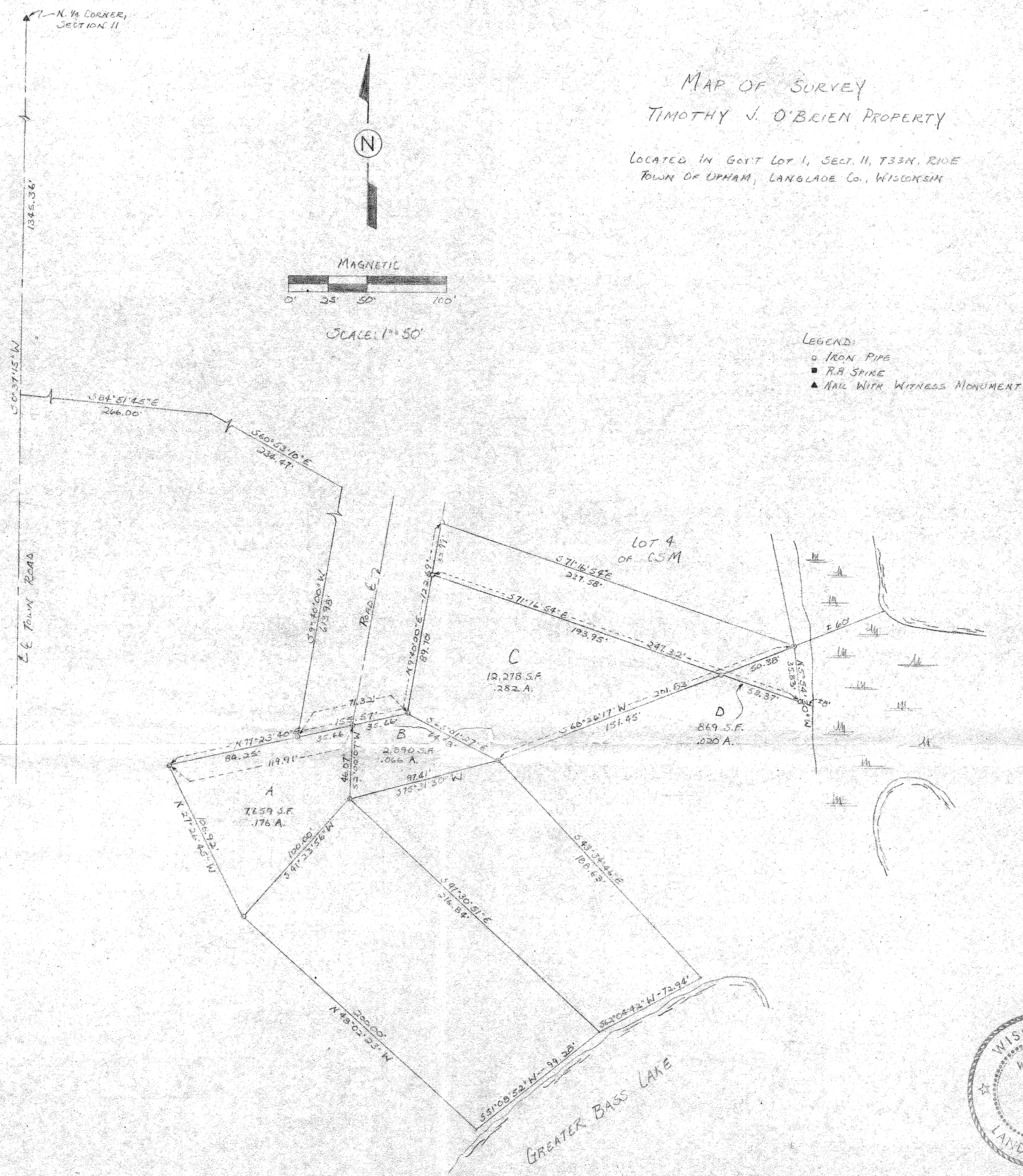


MAP OF SURVEY
TIMOTHY J. O'BRIEN PROPERTY

LOCATED IN GOVT LOT 4, SECT. 11, T33N. R10E
TOWN OF UPHAM, LANGLADE CO., WISCONSIN



PARCEL A: Commencing at the N. 1/4 corner of said Sect. 11; thence S00°37'15"W, 1345.36 feet; thence S84°51'45"E, 266.00 feet; thence S60°53'10"E, 234.47 feet; thence S09°40'00"W, 613.98 feet to the point of beginning;

Thence N77°23'40"E, 35.66 feet; thence S02°00'10"W, 46.07 feet; thence S41°23'56"W, 100.00 feet; thence N27°26'45"W, 106.92 feet; thence N77°23'40"E, 84.25 feet to the point of beginning.

Said parcel contains 7,659 SF (.176 acre).

PARCEL B: Commencing at the N. 1/4 corner of said Sect. 11; thence S00°37'15"W, 1345.36 feet; thence S84°51'45"E, 266.00 feet; thence S60°53'10"E, 234.47 feet; thence S09°40'00"W, 613.98 feet; thence N77°23'40"E, 35.66 feet to the point of beginning;

Thence N77°23'40"E, 35.66 feet; thence S63°01'27"E, 64.98 feet; thence S75°51'30"W, 97.41 feet; thence N02°00'10"W, 46.07 feet to the point of beginning.

Said parcel contains 2,890 SF (.066 acre).

PARCEL C: Commencing at the N. 1/4 corner of said Sect. 11; thence S00°37'15"W, 1345.36 feet; thence S84°51'45"E, 266.00 feet; thence S60°53'10"E, 234.47 feet; thence S09°40'00"W, 613.98 feet; thence N77°23'40"E, 71.32 feet to the point of beginning;

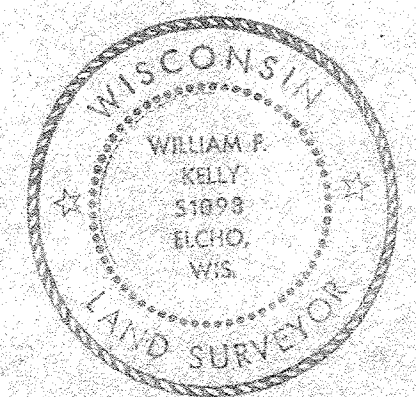
Thence N09°40'00"E, 89.70 feet; thence S71°16'54"E, 193.95 feet; thence S68°26'17"W, 151.45 feet; thence N63°01'27"W, 64.98 feet to the point of beginning.

Said parcel contains 12,278 SF (.282 acre).

PARCEL D: Commencing at the N. 1/4 corner of said Sect. 11; thence S00°37'15"W, 1345.36 feet; thence S84°51'45"E, 266.00 feet; thence S60°53'10"E, 234.47 feet; thence S09°40'00"W, 613.98 feet; thence N77°23'40"E, 71.32 feet; thence N09°40'00"E, 89.70 feet; thence S71°16'54"E, 193.95 feet to the point of beginning;

Thence S71°16'54"E, 53.37 feet; thence N05°54'30"W, 35.83 feet; thence S68°26'17"W, 50.38 feet to the point of beginning. Said parcel boundaries extend to the lakeshore.

Said parcel contains 869 SF (.020 acre).



William F. Kelly
8-9-84

BUILDERS SERVICE ENGINEERING DIVISION	
MAP OF SURVEY	
T.J. O'BRIEN	
PROPERTY EXCHANGE	
DRAWN BY: LWA MEYER	
SCALE 1" = 50'	DATE AUG. 1, 1984
SHEET 1 OF 1	DWG. NO: 1347
Rev. Lots A & B 12/14/84 " 12/14/84 " C & D 6/20/85	

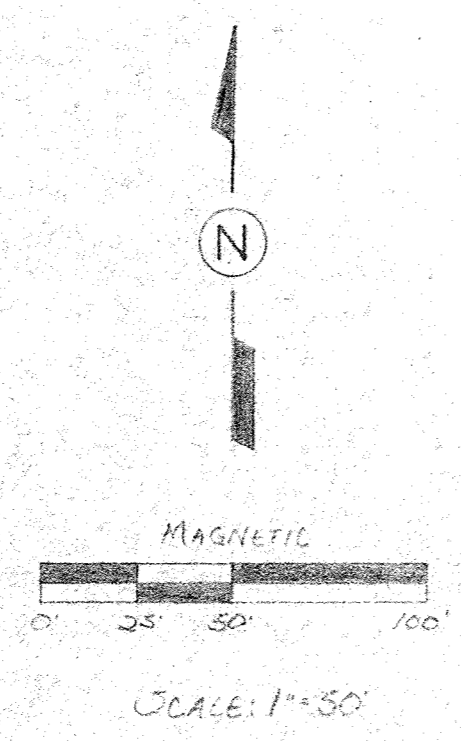
30377 REVISED

N 1/4 CORNER, SECTION 11

1345.36'

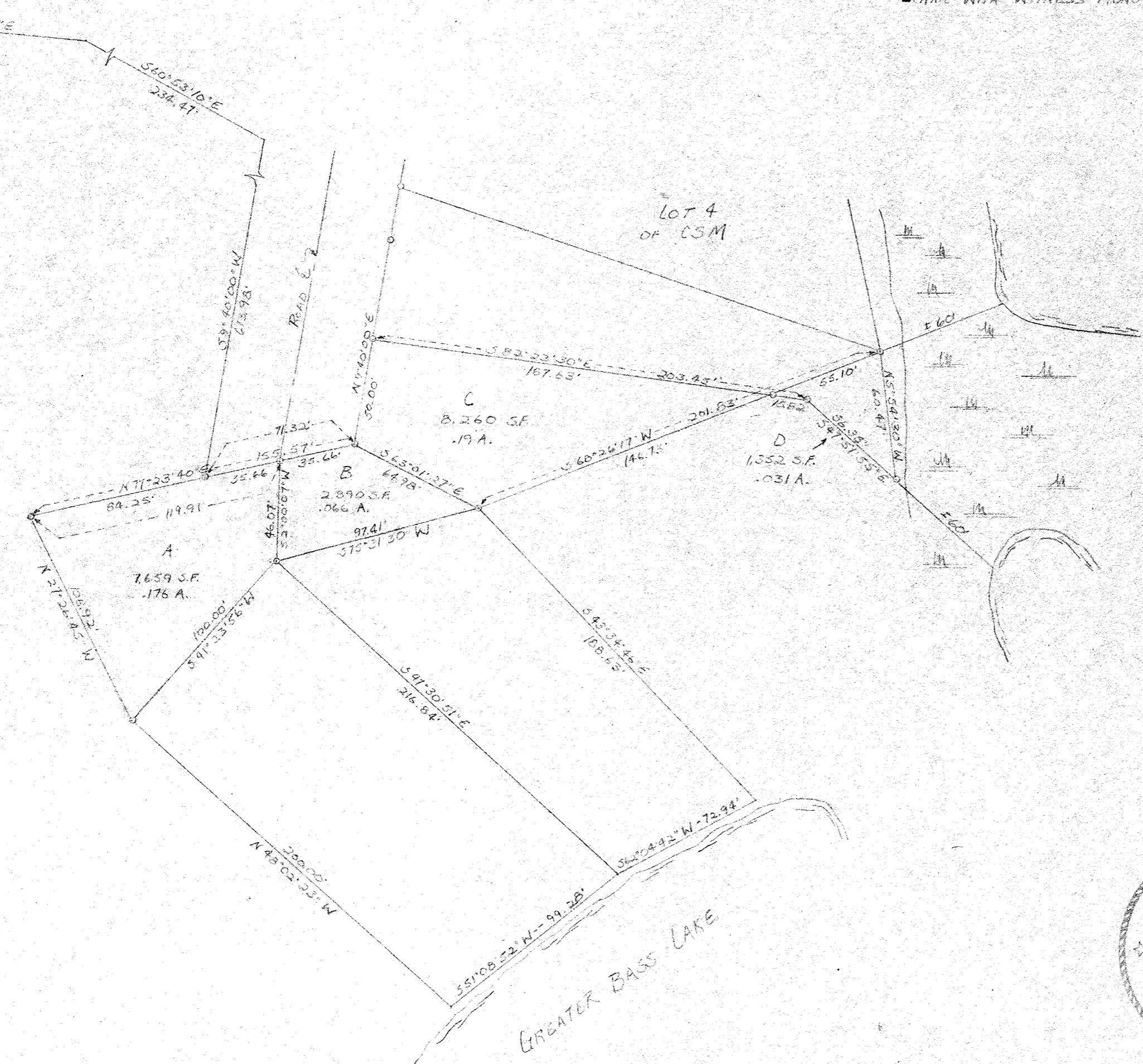
S 00° 37' 15" W

E.E. Town Road



MAP OF SURVEY
TIMOTHY J. O'BRIEN PROPERTY
LOCATED IN GOVT LOT 1, SECT 11, T33N. R10E
TOWN OF UPHAM, LANGLADE CO., WISCONSIN

- LEGEND:
- IRON PIPE
 - B.R. SPIKE
 - ▲ NAIL WITH WITNESS MONUMENT

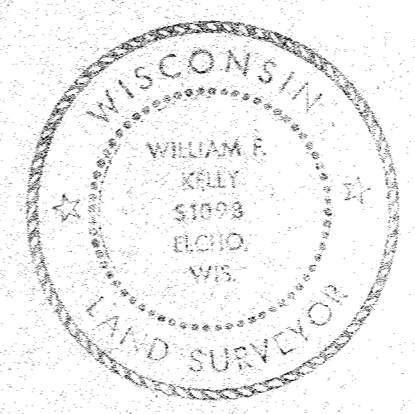


PARCEL A: Commencing at the N. 1/4 corner of said Sect. 11; thence S00°37'15"W, 1345.36 feet; thence S84°51'45"E, 266.00 feet; thence S60°53'10"E, 234.47 feet; thence S09°40'00"W, 613.98 feet to the point of beginning;
Thence N77°23'40"E, 35.66 feet; thence S02°00'07"W, 46.07 feet; thence S41°23'56"W, 100.00 feet; thence N27°26'45"W, 106.92 feet; thence N77°23'40"E, 84.25 feet to the point of beginning.
Said parcel contains 7,659 SF (.176 acre).

PARCEL B: Commencing at the N. 1/4 corner of said Sect. 11; thence S00°37'15"W, 1345.36 feet; thence S84°51'45"E, 266.00 feet; thence S60°53'10"E, 234.47 feet; thence S09°40'00"W, 613.98 feet; thence N77°23'40"E, 35.66 feet to the point of beginning;
Thence N77°23'40"E, 35.66 feet; thence S63°01'27"E, 64.98 feet; thence S75°31'30"W, 97.41 feet; thence S02°00'07"W, 46.07 feet to the point of beginning.
Said parcel contains 2,890 SF (.066 acre).

PARCEL C: Commencing at the N. 1/4 corner of said Sect. 11; thence S00°37'15"W, 1345.36 feet; thence S84°51'45"E, 266.00 feet; thence S60°53'10"E, 234.47 feet; thence S09°40'00"W, 613.98 feet; thence N77°23'40"E, 71.32 feet to the point of beginning;
Thence N09°40'00"E, 501.00 feet; thence S82°23'30"E, 187.63 feet; thence S68°26'17"W, 146.73 feet; thence N63°01'27"W, 64.98 feet to the point of beginning.
Said parcel contains 8,260 SF (.19 acre).

PARCEL D: Commencing at the N. 1/4 corner of said Sect. 11; thence S00°37'15"W, 1345.36 feet; thence S84°51'45"E, 266.00 feet; thence S60°53'10"E, 234.47 feet; thence S09°40'00"W, 613.98 feet; thence N77°23'40"E, 71.32 feet; thence N09°40'00"E, 50.00 feet; thence S82°23'30"E, 187.63 feet to the point of beginning;
Thence S82°23'30"E, 15.82 feet; thence S47°51'55"E, 56.35 feet; thence N05°54'30"W, 60.47 feet; thence S68°26'17"W, 55.10 feet to the point of beginning. Said parcel boundaries extend to the lakeshore.
Said parcel contains 1,352 SF (.031 acre).

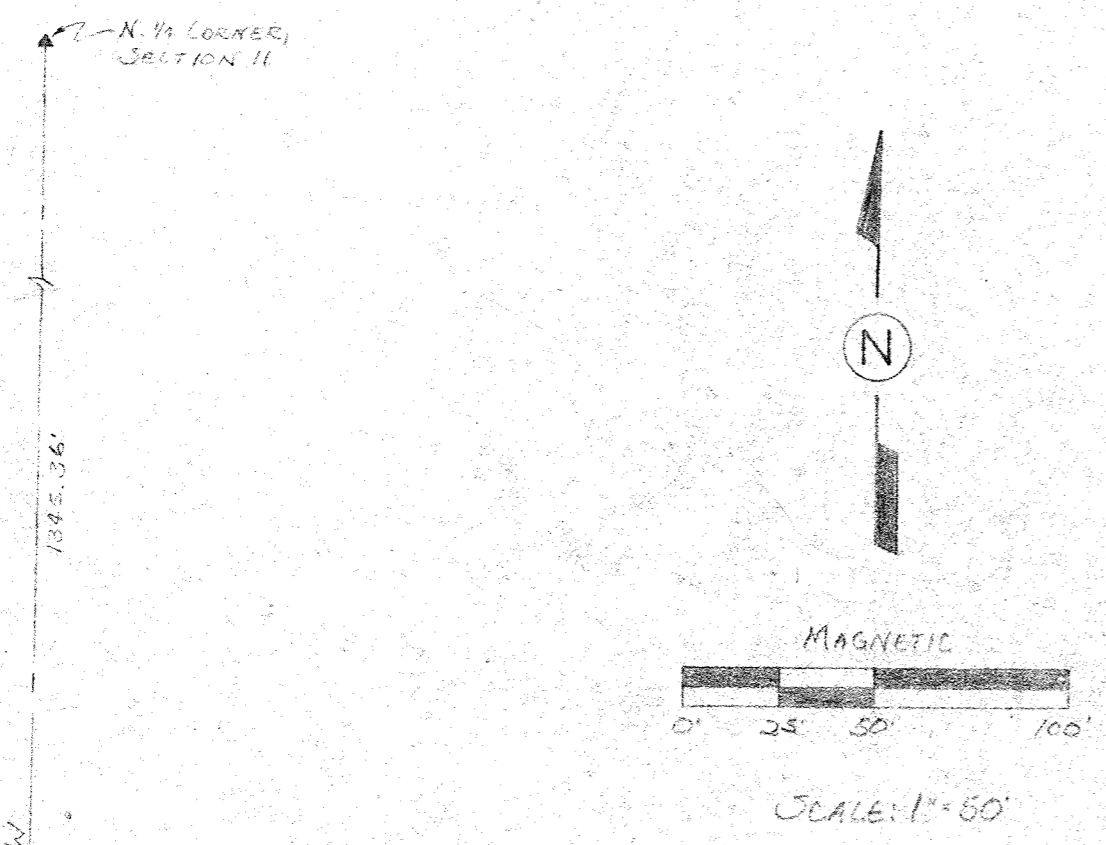


William F. Kelly
8-9-84

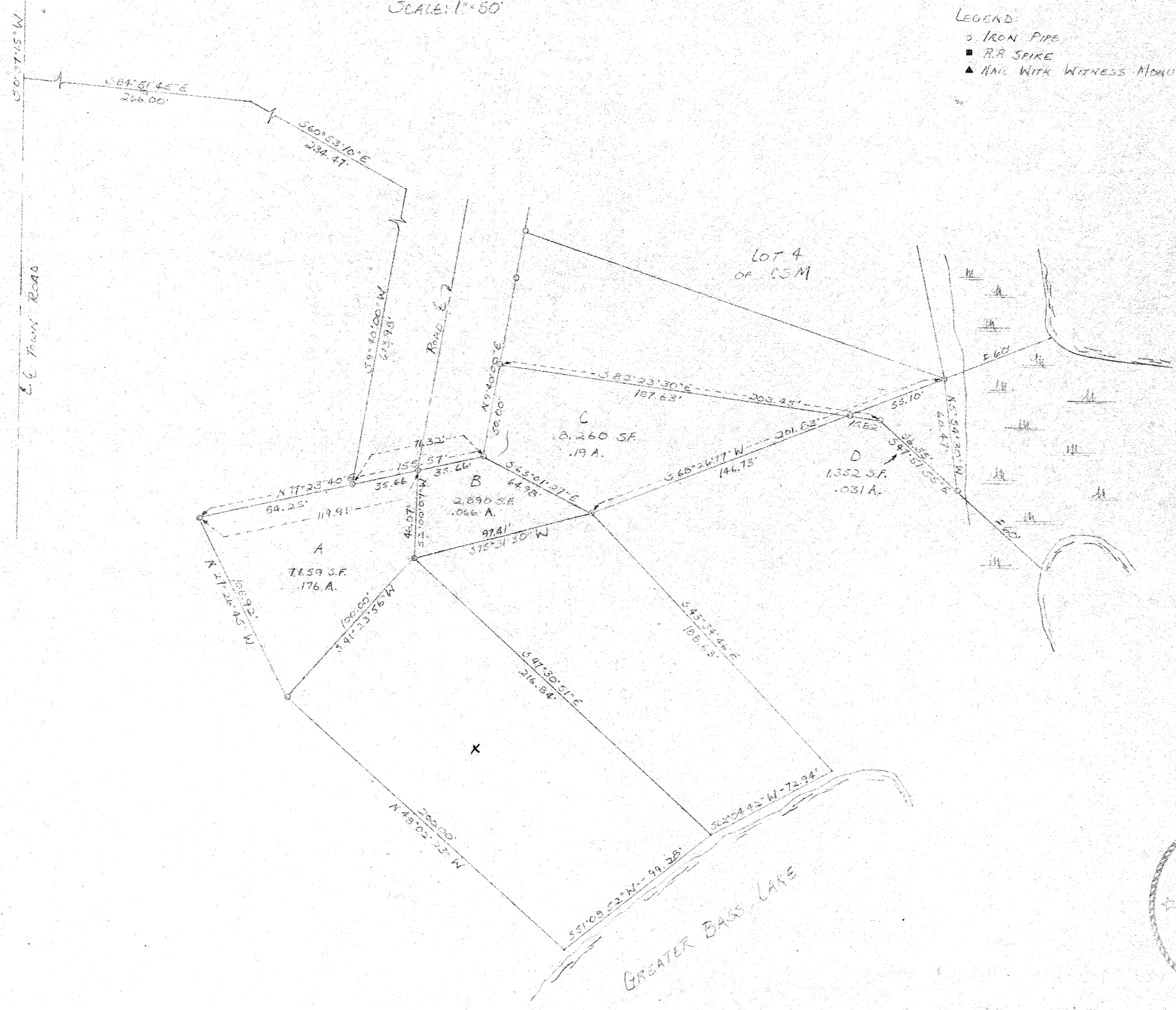
BUILDERS SERVICE ENGINEERING DIVISION	
MAP OF SURVEY	
T.J. O'BRIEN	
PROPERTY EXCHANGE	
DRAWN BY: LVA MEYER	
SCALE: 1" = 50'	DATE: Aug 1, 1984
SHEET 1 OF 1	DWG. NO: 1347
Rev. Lots A & B 12/14/84 " 12/19/84	

RECORD # 30377
LANGLADE COUNTY SURVEYORS OFFICE
DATE FILED: 6/19/93 BY: DT.

MAP OF SURVEY
TIMOTHY J. O'BRIEN PROPERTY
LOCATED IN GAYT LOT 1, SECT 11, T33N, R10E
TOWN OF UPHAM, LANGLADE CO., WISCONSIN



LEGEND
 ○ IRON PIPE
 ■ R.R. SPIKE
 ▲ ANG. WITH WITNESS MONUMENT

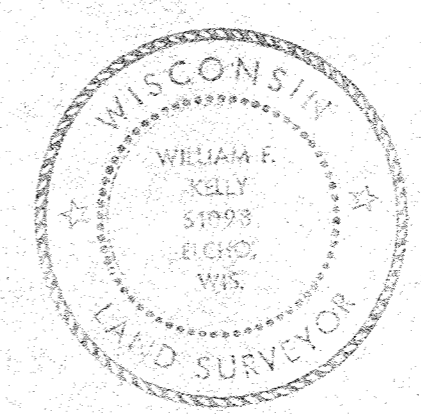


PARCEL A: Commencing at the N. ¼ corner of said Sect. 11; thence S00°37'15\"W, 1345.36 feet; thence S84°51'45\"E, 266.00 feet; thence S60°53'10\"E, 234.47 feet; thence S09°40'00\"W, 613.98 feet to the point of beginning;
 Thence N77°23'40\"E, 35.66 feet; thence S62°00'07\"W, 46.07 feet; thence S41°23'56\"W, 100.00 feet; thence N27°26'45\"W, 106.92 feet; thence N77°23'40\"E, 84.25 feet to the point of beginning.
 Said parcel contains 7,659 SF (.176 acre).

PARCEL B: Commencing at the N. ¼ corner of said Sect. 11; thence S00°37'15\"W, 1345.36 feet; thence S84°51'45\"E, 266.00 feet; thence S60°53'10\"E, 234.47 feet; thence S09°40'00\"W, 613.98 feet; thence N77°23'40\"E, 35.66 feet to the point of beginning;
 Thence N77°23'40\"E, 35.66 feet; thence S63°01'27\"E, 64.98 feet; thence S75°31'30\"W, 97.41 feet; thence S62°00'07\"W, 46.07 feet to the point of beginning.
 Said parcel contains 2,890 SF (.066 acre).

PARCEL C: Commencing at the N. ¼ corner of said Sect. 11; thence S00°37'15\"W, 1345.36 feet; thence S84°51'45\"E, 266.00 feet; thence S60°53'10\"E, 234.47 feet; thence S09°40'00\"W, 613.98 feet; thence N77°23'40\"E, 71.32 feet to the point of beginning;
 Thence N09°40'00\"E, 50.00 feet; thence S82°23'30\"E, 187.63 feet; thence S68°26'17\"W, 146.73 feet; thence N63°01'27\"W, 64.98 feet to the point of beginning.
 Said parcel contains 8,260 SF (.19 acre).

PARCEL D: Commencing at the N. ¼ corner of said Sect. 11; thence S00°37'15\"W, 1345.36 feet; thence S84°51'45\"E, 266.00 feet; thence S60°53'10\"E, 234.47 feet; thence S09°40'00\"W, 613.98 feet; thence N77°23'40\"E, 71.32 feet; thence N09°40'00\"E, 50.00 feet; thence S82°23'30\"E, 187.63 feet to the point of beginning;
 Thence S82°23'30\"E, 15.82 feet; thence S47°51'55\"E, 56.35 feet; thence N05°54'30\"W, 60.47 feet; thence S68°26'17\"W, 55.10 feet to the point of beginning. Said parcel boundaries extend to the lakeshore.
 Said parcel contains 1,352 SF (.031 acre).



William F. Kelly
8-9-84

BUILDERS SERVICE ENGINEERING DIVISION	
MAP OF SURVEY	
T.J. O'BRIEN	
PROPERTY EXCHANGE	
DRAWN BY: ULA MEYER	
SCALE: 1\"/>	DATE: AUG. 1, 1984
SHEET: 1 OF 1	DWG. NO: 1347
Rev. Lots Ad B 12/14/84 " 12/19/84	

RECORD # 30377 (extra)
 LANGLADE COUNTY SURVEYORS OFFICE
 DATE FILED: BY:

Description of Access Road over Langlade County Property:

Beginning at a point on the N-S $\frac{1}{4}$ line of Section 22, T33N, R10E, 244.97 feet North of the South $\frac{1}{4}$ Corner; thence Southwesterly approximately 270 feet to Bogus Road.

Description of centerline of access easement for Lot 2 over existing road through Lot 1:

Beginning at a point on the N-S $\frac{1}{4}$ line of Section 22, T33N, R10E, 244.97 feet North of the South $\frac{1}{4}$ Corner; thence N49°18'00"E, 76.69 feet; thence N20°12'20"E, 158.00 feet; thence S68°41'30"E, 288.50 feet; thence N11°34'25"E, 138.55 feet; thence S84°14'45"E, 38.57 feet to the common boundary between Lot 1 and Lot 2.