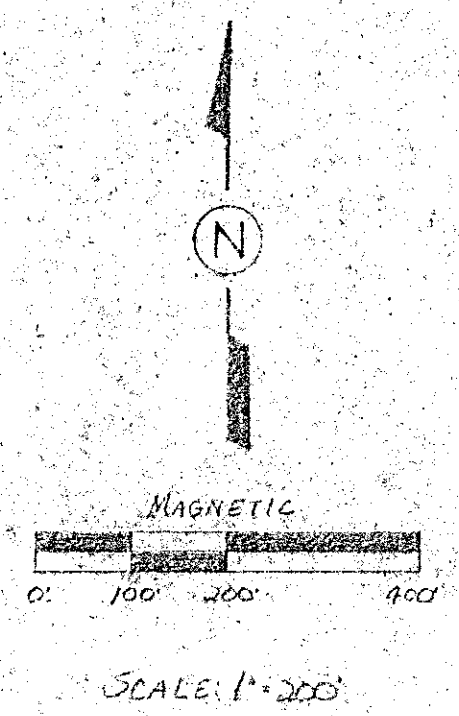
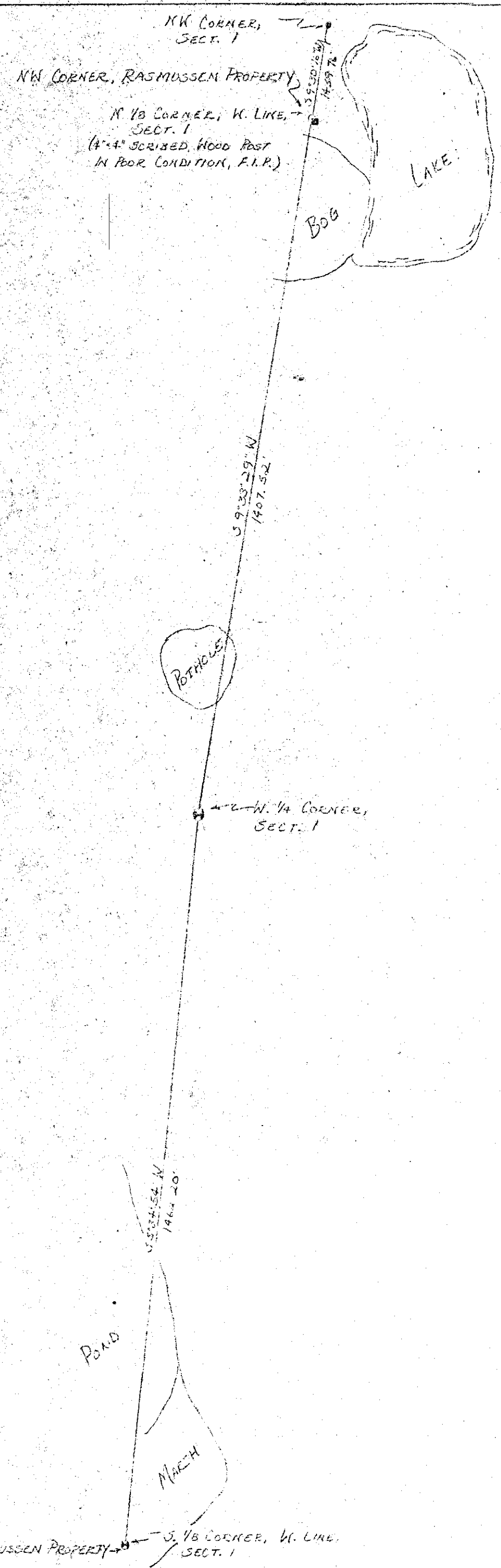
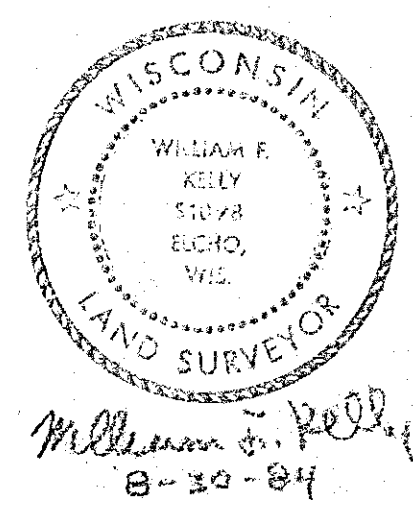


LINE SURVEY
FOR
BRUCE RASMUSSEN

BEING A PART OF THE W. LINE, SECTION 1,
T34N, R10E, TOWN OF ELDHO, LANGLADE COUNTY, WI



- LEGEND:
- 2" x 30" IRON PIPE, 3.65" I.D., SET, EXISTING 4" x 4" WOOD POST
 - 1 1/4" IRON PIPE WITH 4" WITNESS CORNER, FOUND IN PLACE
 - 4" BRASS CAP MONUMENT, FOUND IN PLACE
 - 1 1/2" BRASS CAP MONUMENT, FOUND IN PLACE



BUILDERS SERVICE ENGINEERING DIVISION	
LINE SURVEY	
B RASMUSSEN	
SECT. 1, T34N, R10E	
DRAWN BY: LISA MEYER	
SCALE 1" = 200'	DATE AUGUST 8, 1984
SHEET 1 OF 1	DWG. NO: 1348
REV. SEPT. 10, 1984	

RECORD # 30392
LANGLADE COUNTY SURVEYORS OFFICE
DATE FILED: 6/9/93 BY: DJ