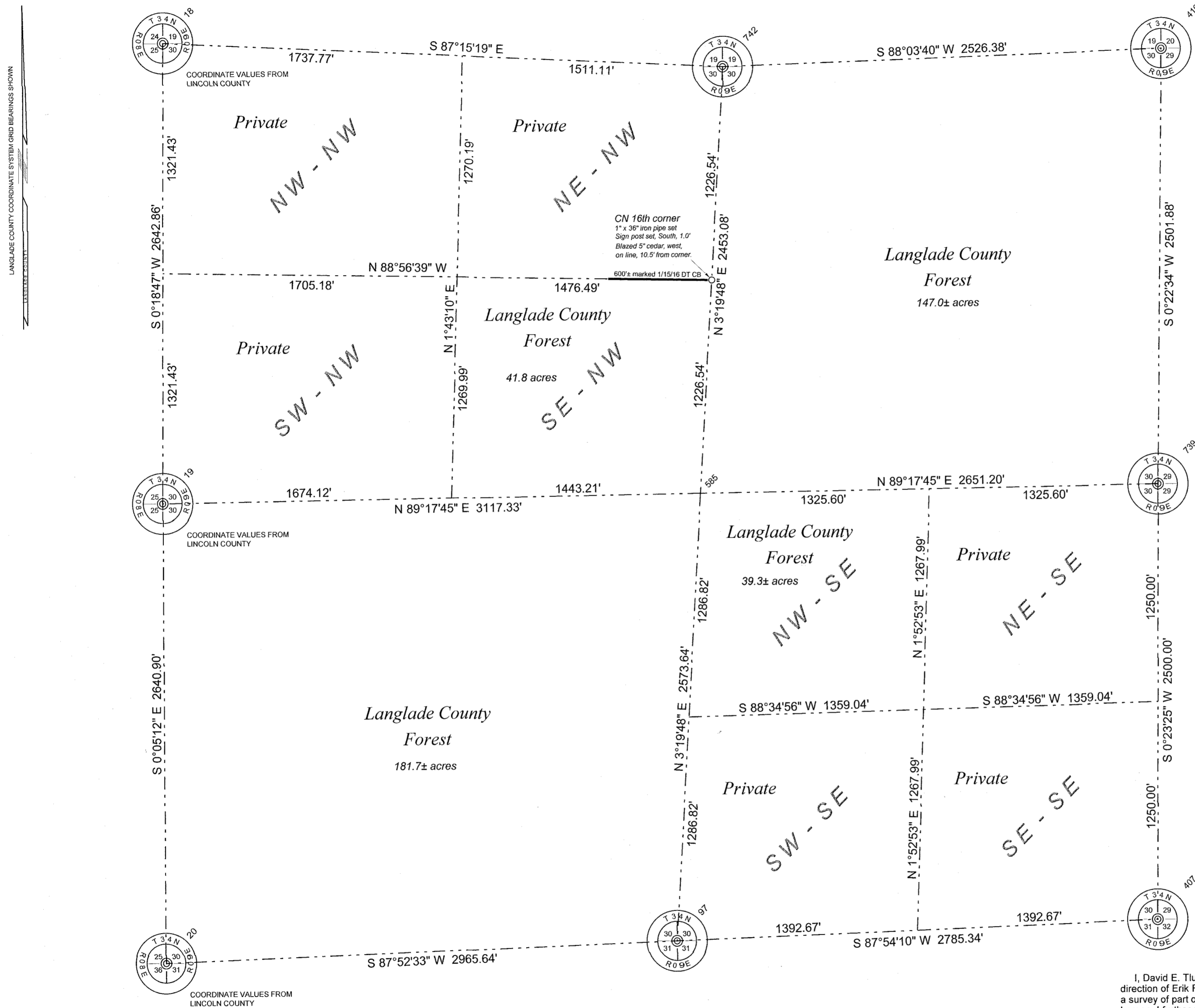


Section 30, Township 34 North, Range 09 East



SURVEY COMMENTS

The Coordinate values for the N1/4 and E 1/4 corner obtained by direct RTK GPS on the corner monument. The coordinate values on the west line of the section were obtained from the Lincoln County Surveyors office. The coordinates for the S 1/4 was computed from the NW and W1/4 corners from data shown on map 20455. All coordinates are for reference only and should be used only as search coordinates.

Coordinates shown are Langlade County Coordinates, NAD 83(2011) datum
Bearings shown are Langlade County Coordinate System grid bearings.
Bearing trees have a "Bearing Tree" sign facing the corner and have been measured to an aluminum nail is a side blaze on the right side of the tree.

- 1" (ID) x 30" iron pipe set
 - 3/4" x 30" rebar set
 - 2" iron pipe with brass cap found
 - property line flagged and painted blue
- A green, steel channel sign post with a "Langlade County Forest" sign has been set within 0.5' of each pipe or rebar set.

List Points Report
File: O:\Carlson Survey Projects\parrish.crd
Fri Apr 08 11:55:54 2016

PointNo.	Northing(Y)	Easting(X)	Description
19	435984.90	550514.00	2 from Lincoln County
18	438627.72	550528.44	2 from Lincoln County
742	438472.15	553773.60	2 4INIPBCFND RTK2X:01152 FB28-3
739	436055.79	556282.11	2 SN1 FND2XRTK:01152016 FB28-3
97	433453.93	553481.60	3 computed
20	433344.00	550518.00	2 from Lincoln County
585	436023.21	553631.09	3 CTR
407 & 410	added to map on 07 29 2016		
407	433555.86	556265.08	2 mag na fnd 05042016
410	438557.62	556298.53	2 SC 60d set temp from ties

I, David E. Tlusty, Langlade County Surveyor, do hereby certify that by the direction of Erik Rantala, Langlade County Forest Administrator, I have made a survey of part of Section 30, T.34 N., R.09 E., Town of Parrish, as shown hereon. I further certify that this map is a true and correct representation of said survey, and that this survey is correct to the best of my knowledge and belief. Corner restoration forms are on file for all monumented corners shown.

David E. Tlusty 7/29/2016
David E. Tlusty, S-1390
Langlade County Surveyor

RECORD # 30402
LANGLADE COUNTY SURVEYORS OFFICE
RE- 7/29/16 BY: D.T.
DATE FILED: 7/29/16 BY: D.T.
REVISED TO SHOW NE & SE
COR'S & DIVISION OF SE 1/4

THIS DOCUMENT WAS CREATED ON LANGLADE COUNTY COMPUTER EQUIPMENT THAT WAS PURCHASED WITH THE ASSISTANCE OF A GRANT RECEIVED FROM THE WISCONSIN LAND INFORMATION BOARD.

LANGLADE COUNTY
LAND RECORDS & REGULATIONS DEPARTMENT

SCALE:	1" = 500'
DRAWN BY:	D. TLUSTY
REF. FILE:	
DATE:	04/11/16
TOWN OF:	PARRISH
TOWN CODE:	
LOCATION:	
SECTION:	30
TOWNSHIP:	34
RANGE:	09
DWG. #:	..303409

NO.	DATE	DESCRIPTION	REVISIONS
1	XX		dt