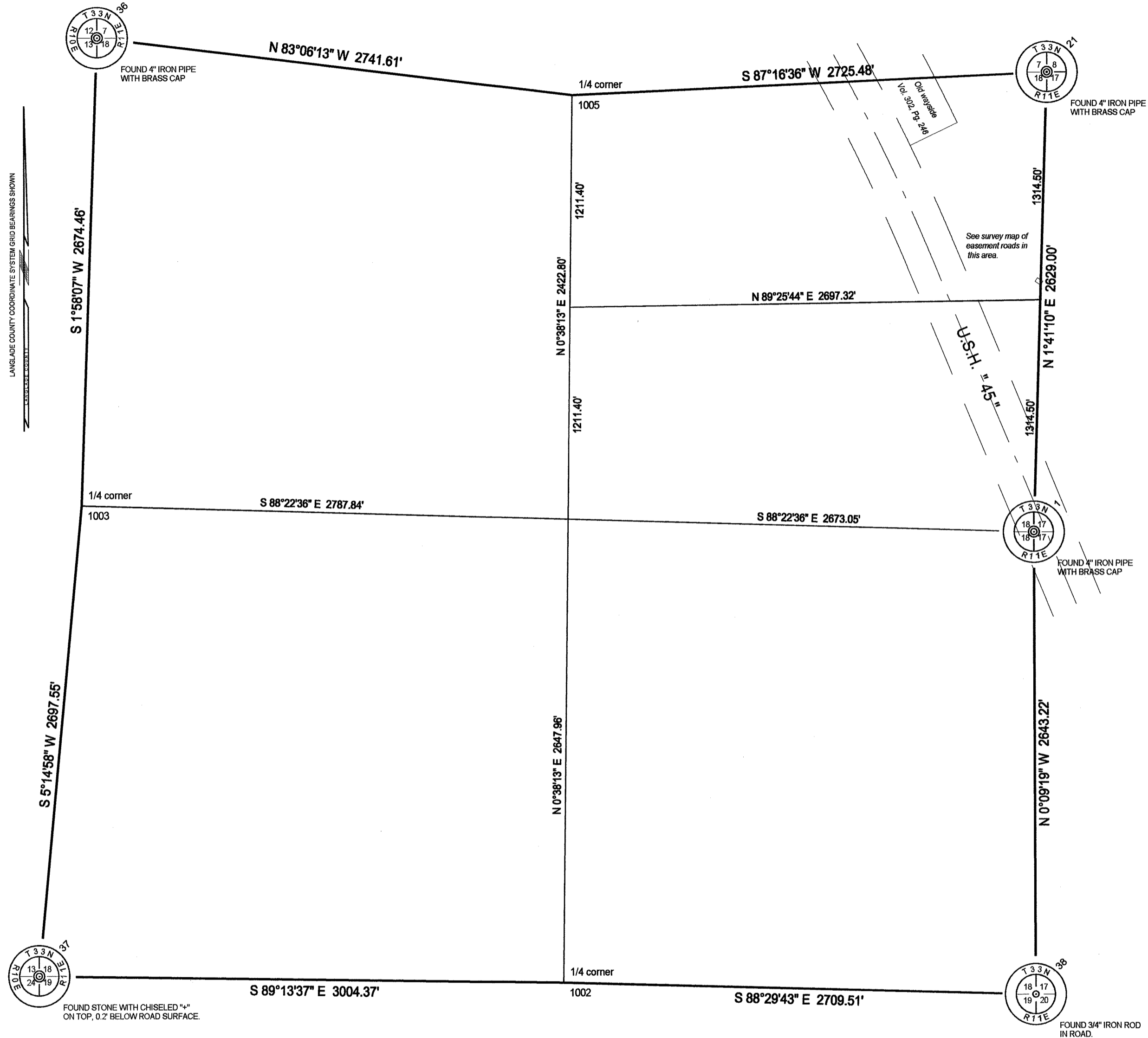


Section 18, Township 33 North, Range 11 East



The coordinate values of the Southwest and Southeast corners have been obtained by direct GPS observations on the points (accuracy ±1cm). The coordinate values of the Northwest, Northeast and East 1/4 corners have been obtained by occupying offset GPS points near each of those corners. The coordinate values of the North, West and South 1/4 corners have been obtained by using measurement data from Tom Arnotts 1998 section subdivision map #10490 and estimated accuracies for those values have been shown.

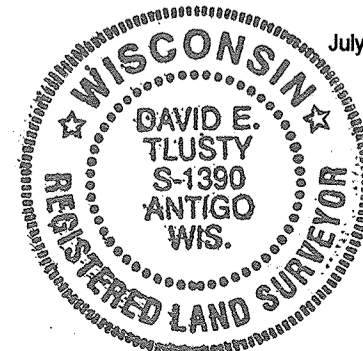
Coordinates shown are Langlade County Coordinates.  
Bearings shown are Langlade County Coordinate System grid bearings.

LANGLADE COUNTY COORDINATES FOR SECTION 18, T33N, R11E

PNO	N	E	DESC
1	414552.734	619839.565	E1/4X S18-33-11 4\" IP/BC
21	417180.608	619916.916	NEX S18-33-10 4\" IP/BC
36	417380.310	614472.739	NWX S18 4\" IP BC
37	412021.195	614134.064	RTK ON STONE W/X SECTION CORNER
38	411909.521	619846.730	RTK ON IRON ROD FOUND
1001	414628.458	617167.589	CALC CTR S18
1002	411980.667	617138.158	CALC S1/4X18 FROM ARNOTT INFO + 0.5'
1003	414707.434	614380.869	CALC W1/4X18 FROM ARNOTT INFO + 0.5'
1005	417051.118	617194.517	CALC N1/4X18 FROM ARNOTT INFO + 0.5'

I, David E. Tlusty, Langlade County Surveyor, do hereby certify that I have made a survey of the perimeter of Section 18, T.33 N., R.11 E., Town of Upham, as shown hereon. I further certify that this map is a true and correct representation of said survey, and that this survey is correct to the best of my knowledge and belief. Corner restoration forms are on file for all monumented corners shown.

July 17, 2002



*David E. Tlusty*  
David E. Tlusty, S-1390  
Langlade County Surveyor

RECORD # 30422  
LANGLADE COUNTY SURVEYORS OFFICE  
DATE FILED: 7/17/02 BY: D. Tlusty

SCALE:  
1" = 500'

DRAWN BY:  
D. TLUSTY

REF. FILE:

DATE:  
07/17/2002

TOWN OF:  
UPHAM

TOWN CODE:

LOCATION:

SECTION: 18

TOWNSHIP: 33

RANGE: 11

DWG. #:  
..183311

THIS DOCUMENT WAS CREATED ON LANGLADE COUNTY COMPUTER EQUIPMENT THAT WAS PURCHASED WITH THE ASSISTANCE OF A GRANT RECEIVED FROM THE WISCONSIN LAND INFORMATION BOARD.

**LANGLADE COUNTY**  
LAND RECORDS & REGULATIONS DEPARTMENT

NO.	DATE	DESCRIPTION	BY	REVISIONS