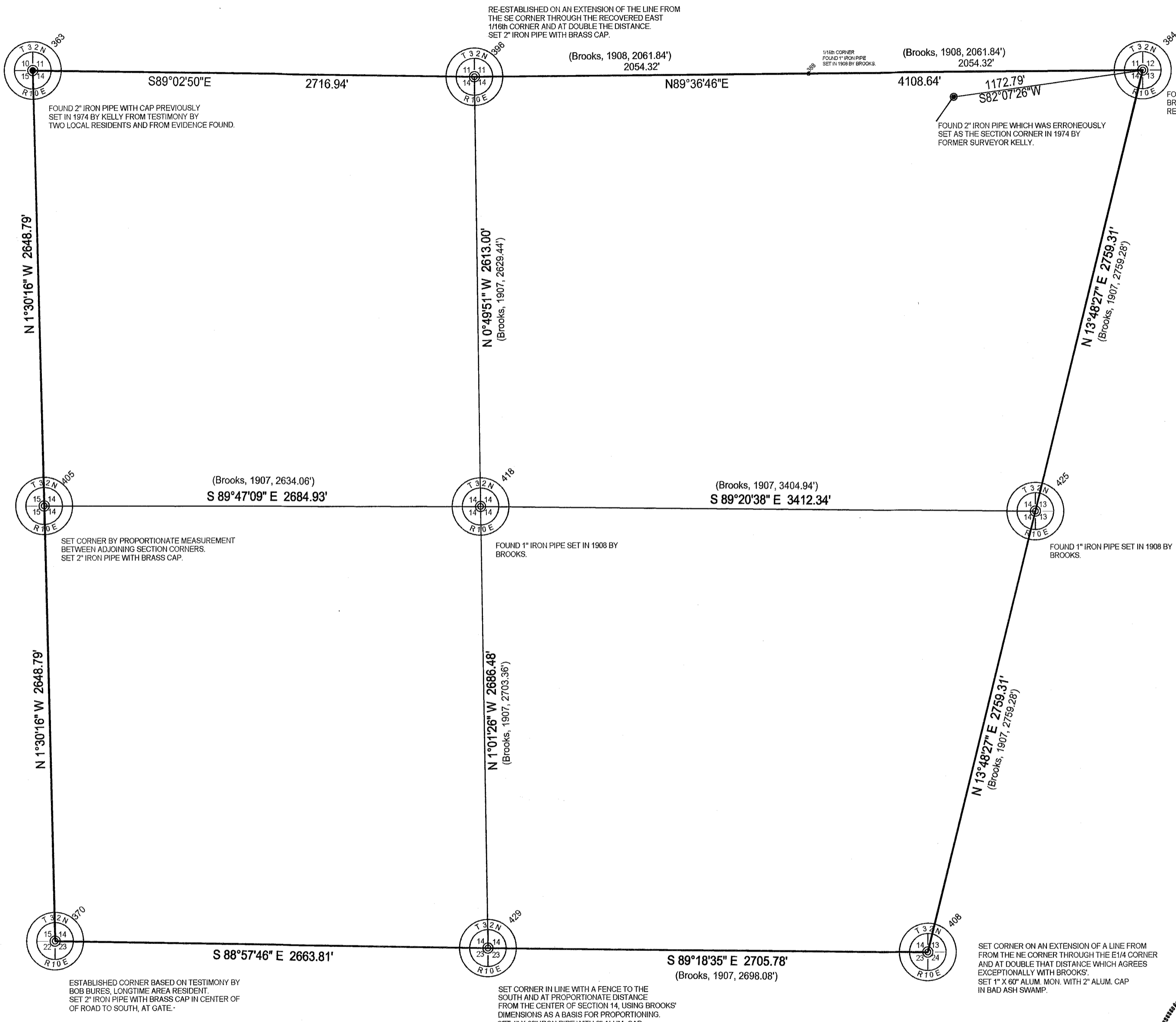


LANGLADE COUNTY COORDINATE SYSTEM GRID BEARINGS SHOWN



RE-ESTABLISHED ON AN EXTENSION OF THE LINE FROM THE SE CORNER THROUGH THE RECOVERED EAST 1/16th CORNER AND AT DOUBLE THE DISTANCE. SET 2\"/>

FOUND 2\"/>

FOUND 2\"/>

FOUND 1\"/>

SET CORNER BY PROPORTIONATE MEASUREMENT BETWEEN ADJOINING SECTION CORNERS. SET 2\"/>

FOUND 1\"/>

FOUND 1\"/>

ESTABLISHED CORNER BASED ON TESTIMONY BY BOB BURES, LONGTIME AREA RESIDENT. SET 2\"/>

SET CORNER IN LINE WITH A FENCE TO THE SOUTH AND AT PROPORTIONATE DISTANCE FROM THE CENTER OF SECTION 14, USING BROOKS' DIMENSIONS AS A BASIS FOR PROPORTIONING. SET 1\"/>

SET CORNER ON AN EXTENSION OF A LINE FROM FROM THE NE CORNER THROUGH THE E 1/4 CORNER AND AT DOUBLE THAT DISTANCE WHICH AGREES EXCEPTIONALLY WITH BROOKS'. SET 1\"/>

I, David E. Tlusty, Langlade County Surveyor, do hereby certify that I have made a survey of the perimeter of Section 14, T.32N., R.10E., Town of Peck, as shown hereon. I further certify that this map is a true and correct representation of said survey, and that this survey is correct to the best of my knowledge and belief. Corner restoration forms are on file for all monumented corners shown.

July 1, 2002  
 David E. Tlusty, S-1390  
 Langlade County Surveyor



THIS DOCUMENT WAS CREATED ON LANGLADE COUNTY COMPUTER EQUIPMENT THAT WAS PURCHASED WITH THE ASSISTANCE OF A GRANT RECEIVED FROM THE WISCONSIN LAND INFORMATION BOARD.

**LANGLADE COUNTY**  
 LAND RECORDS & REGULATIONS DEPARTMENT

SCALE:  
 1" = 500'

DRAWN BY:  
 D. TLUSTY

REF. FILE:

DATE:  
 07/01/2002

TOWN OF:  
 PECK

TOWN CODE:

LOCATION:

SECTION: 14  
 TOWNSHIP: 32  
 RANGE: 10

DWG. #:

NO.	DATE	DESCRIPTION	BY

RECORD # 30428  
 LANGLADE COUNTY SURVEYORS OFFICE  
 DATE FILED: 7/5/02 BY: D. TLUSTY

..SURVEYS/T32N/143210