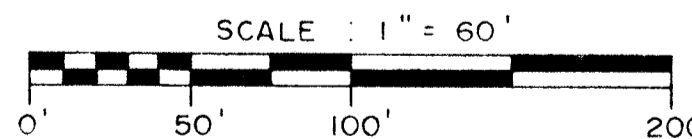
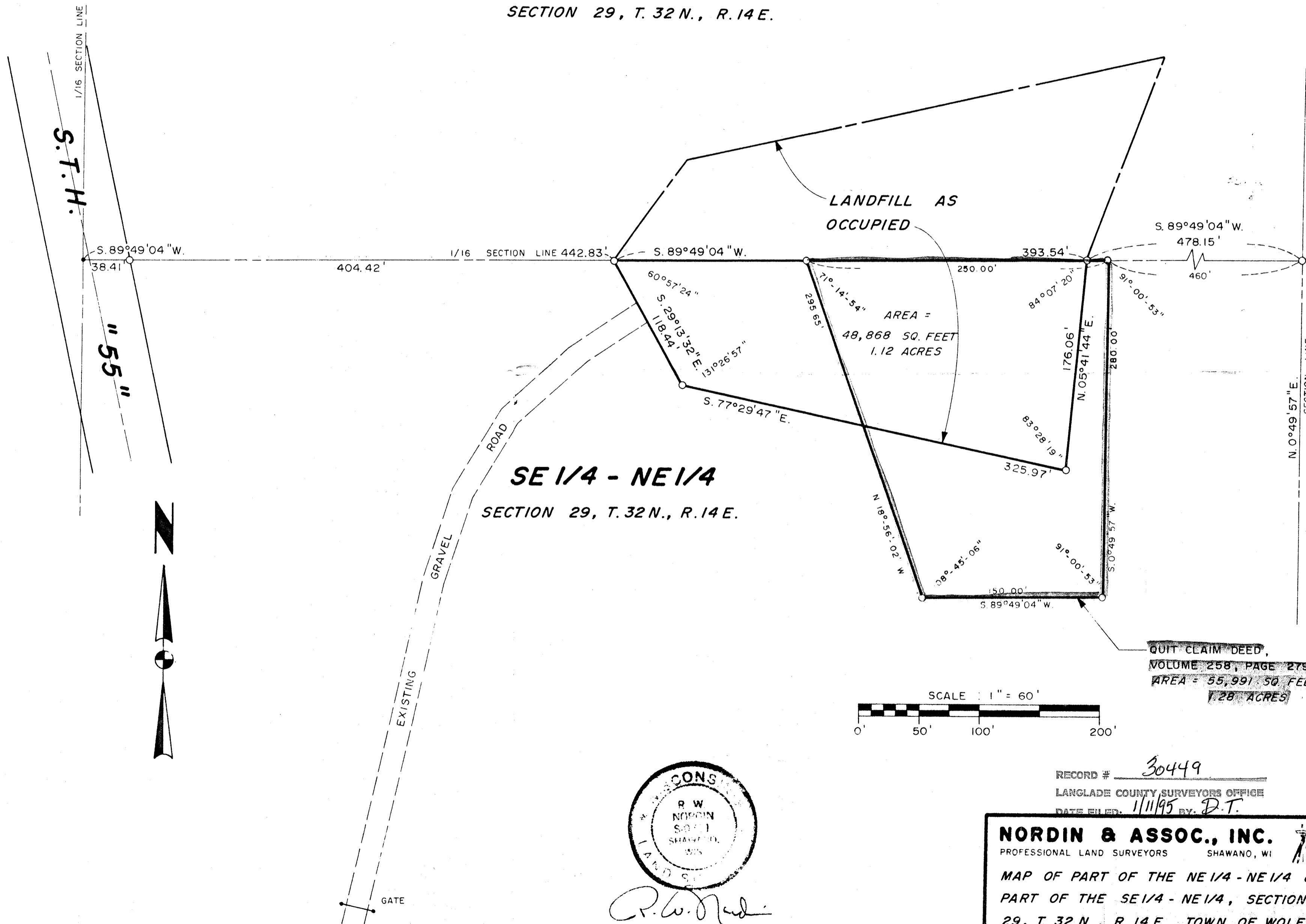


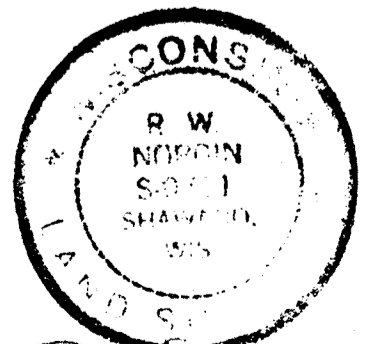
LEGEND AND NOTES

- DENOTES P.K. NAIL SET.
- DENOTES 1" x 24" IRON PIPE SET, MINIMUM WEIGHT = 1.13 LBS. / LINEAL FOOT.

NE 1/4 - NE 1/4
SECTION 29, T. 32 N., R. 14 E.



QUIT CLAIM DEED,
VOLUME 258, PAGE 279,
AREA = 55,991 SQ. FEET
1.28 ACRES



R.W. Nordin
8-18-89.

RECORD # 30449
LANGLADE COUNTY SURVEYORS OFFICE
DATE FILED 1/11/95 BY D.T.

NORDIN & ASSOC., INC.
PROFESSIONAL LAND SURVEYORS SHAWANO, WI
MAP OF PART OF THE NE 1/4 - NE 1/4 &
PART OF THE SE 1/4 - NE 1/4, SECTION
29, T. 32 N., R. 14 E., TOWN OF WOLF
RIVER, LANGLADE COUNTY, WISCONSIN.

DRN BY CLIFF	SCALE 1" = 60'	CLIENT HEISE
DATE 8/18/89	REVISED 10/16/89	NOTES NO 6341