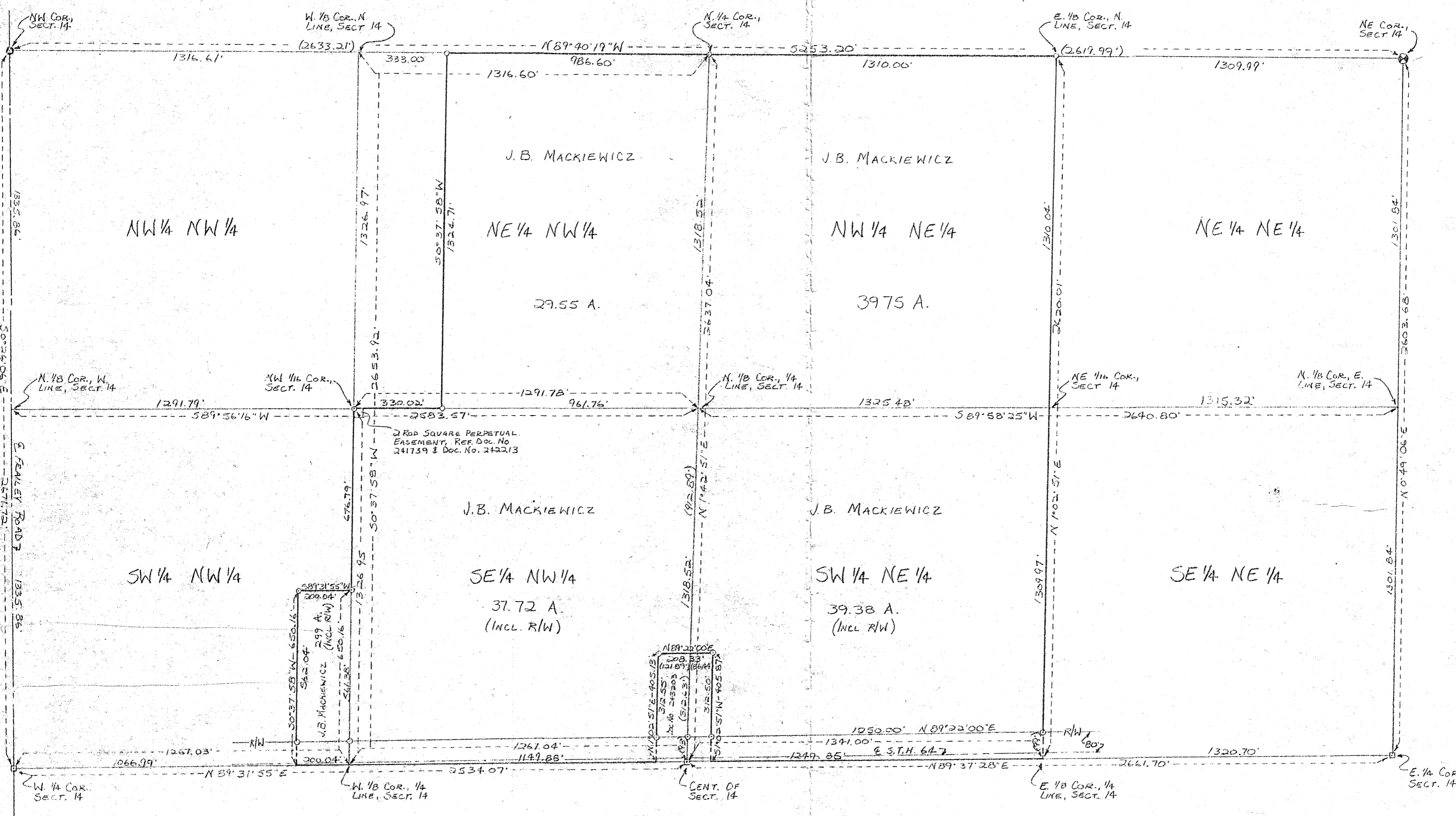


MAP OF SURVEY

JAMIE B. MACKIEWICZ PROPERTY

AS RECORDED IN DOC. NO. 267533, LANG CO. RECORDS

LOCATED IN THE NW 1/4 & W 1/2 NE 1/4, SECTION 14, T31N, R13E
TOWN OF EVERGREEN, LANGLADE CO., WI



- LEGEND:
- IRON PIPE, SET, MIN. WT. 1.13#/L.F.
 - NAIL, SET OVER EXISTING IRON PIPE BELOW ROAD SURFACE
 - R.R. SPIKE, SET FROM EXISTING WITNESS MONUMENTS
 - ⊗ 4" BRASS CAP MONUMENT, FOUND IN PLACE

RECORD # 30459
 LANGLADE COUNTY SURVEYOR
 DATE FILED: 11/13/96 BY: J

BUILDERS SERVICE ENGINEERING	
SURVEY MAP	
FOR	
JAMIE B. MACKIEWICZ	
DRAWN BY: LISA REYNOLDS	DATE: Oct
SCALE 1" = 300'	SHEET 1 OF 1
DWG. NO:	