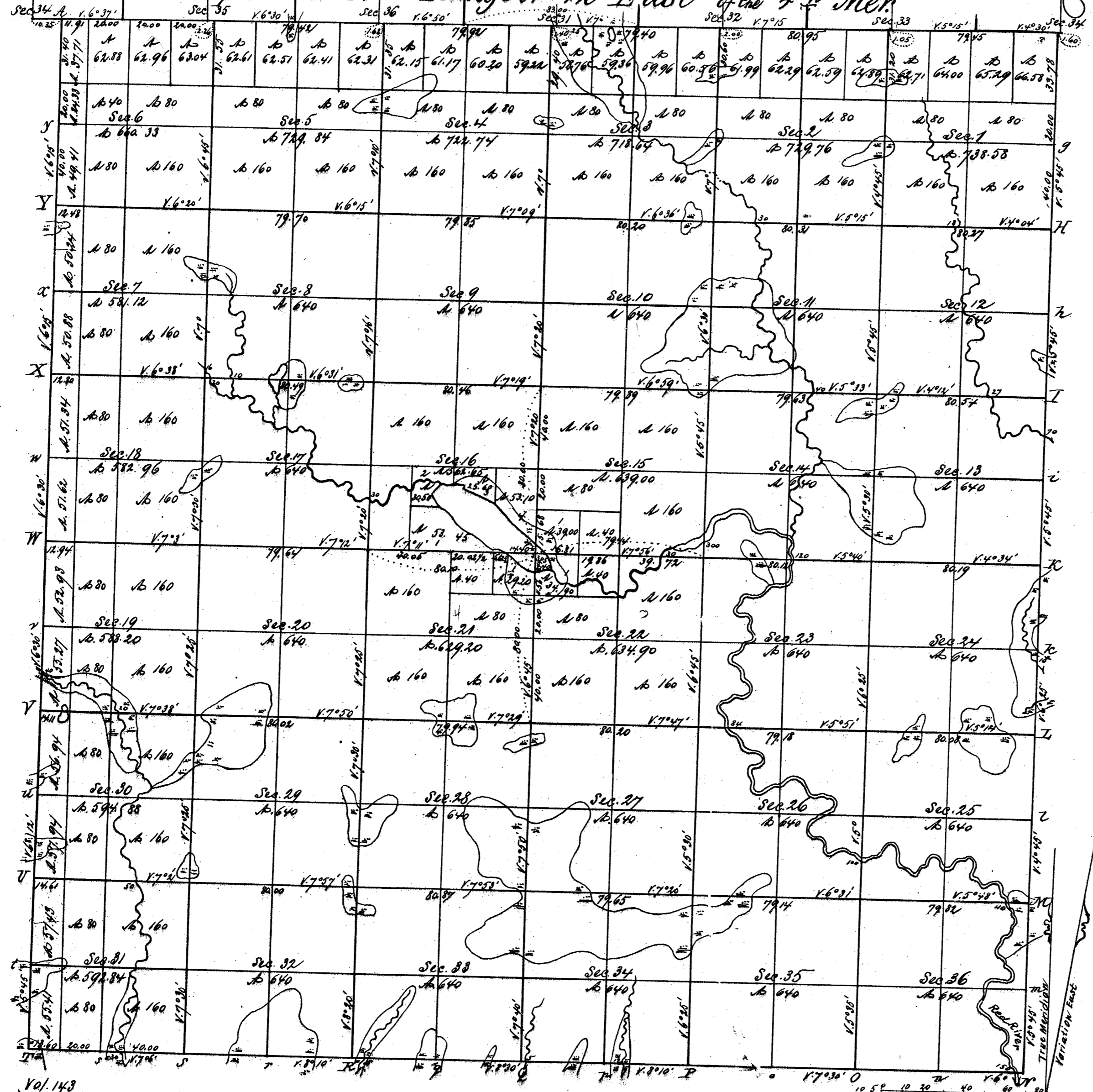


Township N^o 30 N. Range N^o 12 East of the 4th Mer.

Recd with letter of July 6th 1855
No. 920



6400
12800
6400
10740

Vol. 143

Total number of Acres 23,145.64

Surveys Designated	By Whom Surveyed	Date of Contract	Amount of Surveys M. Ch. L ^{ts}	When Surveyed	When Charged in the Warrant
Township lines	Geo. W. Marsh	May 10 th 1851	5. 71. 91	June 1851	
Subdivisions	W. B. Neely	August 3 rd 1853	18. 18. 78	May 1853	
	James Withrow	Sept. 4 th 1854	61. 78. 39	Nov. 7 th Dec. 1854	

3rd Cor. N.
E. W. 4th.

The above map of Township N^o 30 North of Range N^o 12 East of the 4th Principal Meridian State of Wisconsin is strictly conformable to the field notes of the survey thereof, made in this Office, which have been examined and approved by
Surveyor General's Office
Dubuque, February 6th 1855

Harner Lewis
Sur. Gen.