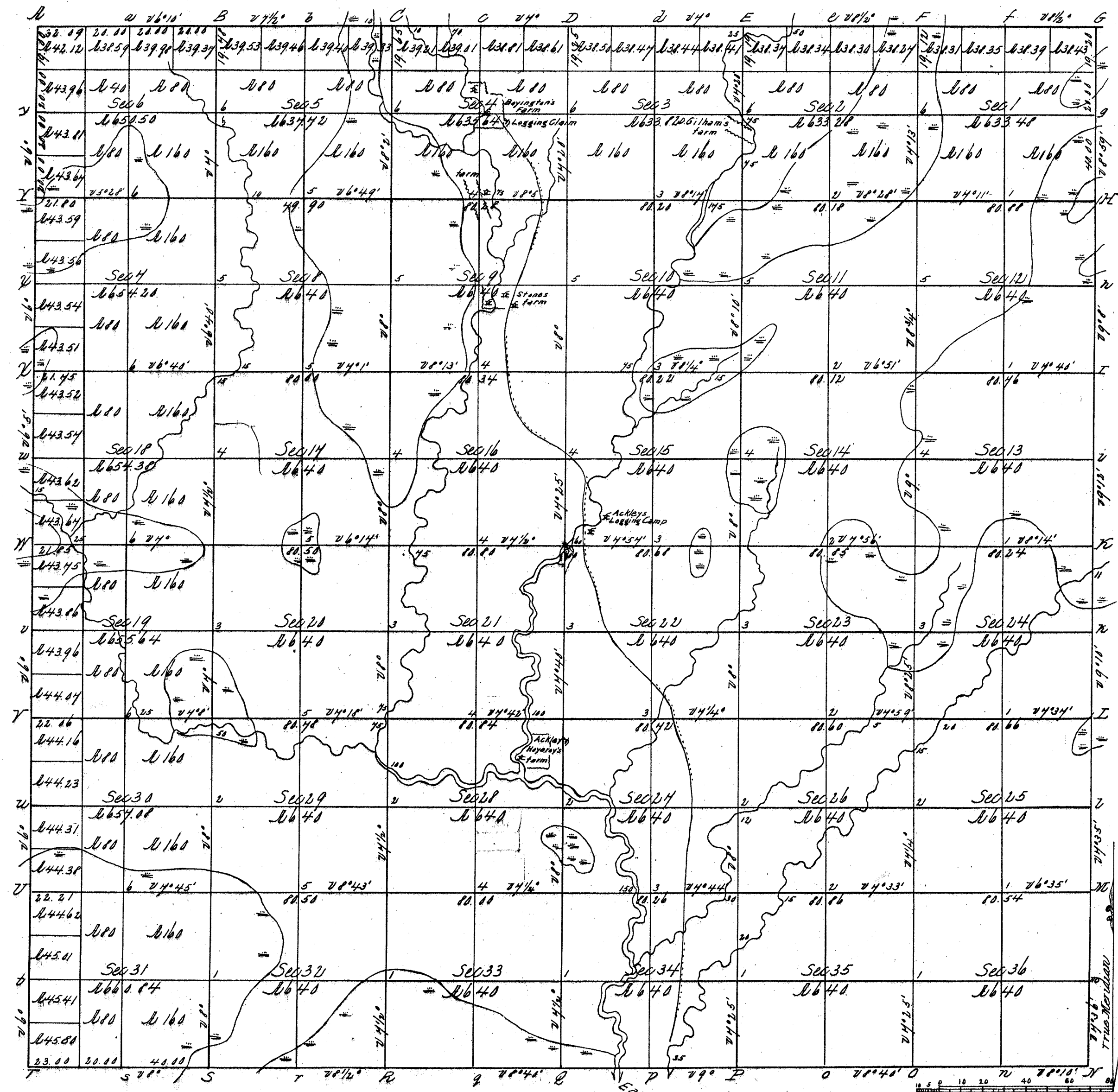




Township N^o 31 N. Range N^o 10 East 4th Mer. Sec^d with Survey letter of Nov 12, 1860



Total number of Acres 23,166.51

Surveys Designated	By Whom Surveyed	Date of Contract	Amount of Surveys Ac. Co. Lvs	When Surveyed	When Closed in the Survey Book
Township lines	W. G. Hallen	13th May 1859	18.00.29	June 1859	
"	Jas M. Marsh	May 10th 1851	6.13.10	June 1851	
Subdivisions	W. G. Hallen	July 30th 1860	60.18.37	August 1860	

W. N. E.
S

1147

The above Map of Township N^o 31 North of Range N^o 10 East 4th Mer. is strictly conformable to the field notes of the survey there of on file in this Office, which have been examined and approved.
 Surveyors General's Office }
 Dubuque Nov 12th 1860 }
 Warner Lewis
 Sur. Gen.

RECORD # 30479

LANGLADE COUNTY SURVEYORS OFFICE

DATE FILED: 3-16-98 BY: AKM