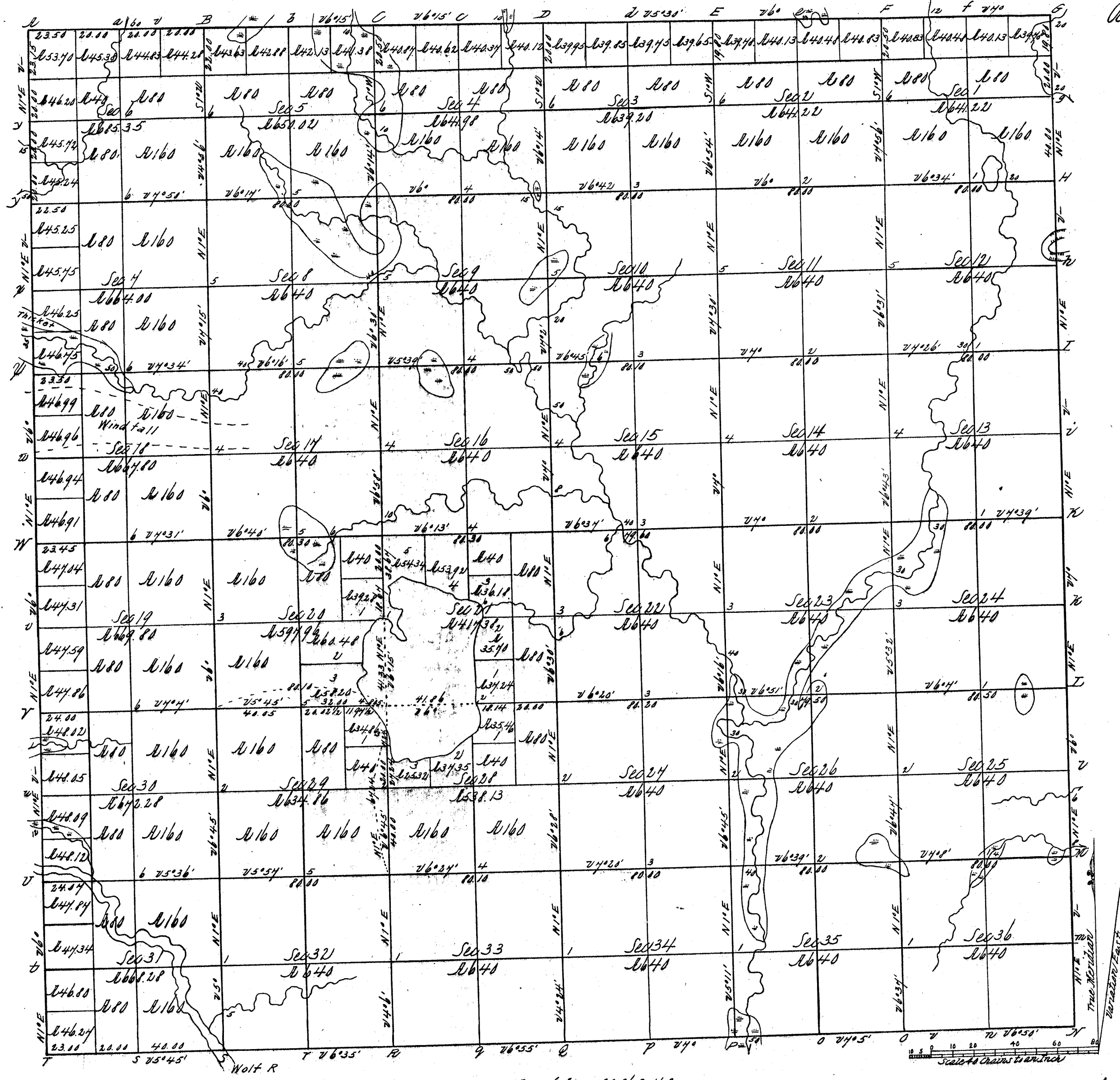


Township N<sup>o</sup> 31 N., Range N<sup>o</sup> 15 East, 4<sup>th</sup> Mer.

Received with Surveyor General's letter dated Feb 9<sup>th</sup> 1858.



Total number of Acres 22,869.48

Surveys Designated	By Whom Surveyed	Date of Contract	Amount of Surveys Ac. Cr. Rps	When Surveyed	When Charged on the Sw. Genl's Acct
Township Acres	James M. Meade	May 18 <sup>th</sup> 1851	6.3.00	June 1851	
	Antoniea Curtis	March 23 <sup>rd</sup> 1854	11.9.45	June & July 1854	
Subdivisions	James M. Meade	July 4 <sup>th</sup> 1854	62.38.14	Sept 1854	

The above Map of Township N<sup>o</sup> 31 North of Range N<sup>o</sup> 15 East, 4<sup>th</sup> Mer. is strictly conformable to the field notes of the Survey thereof on file in this Office, which have been examined and approved.  
 Surveyor General's Office } Warner Lewis  
 Dubuque, July 9<sup>th</sup> 1858 } Sw. Genl.