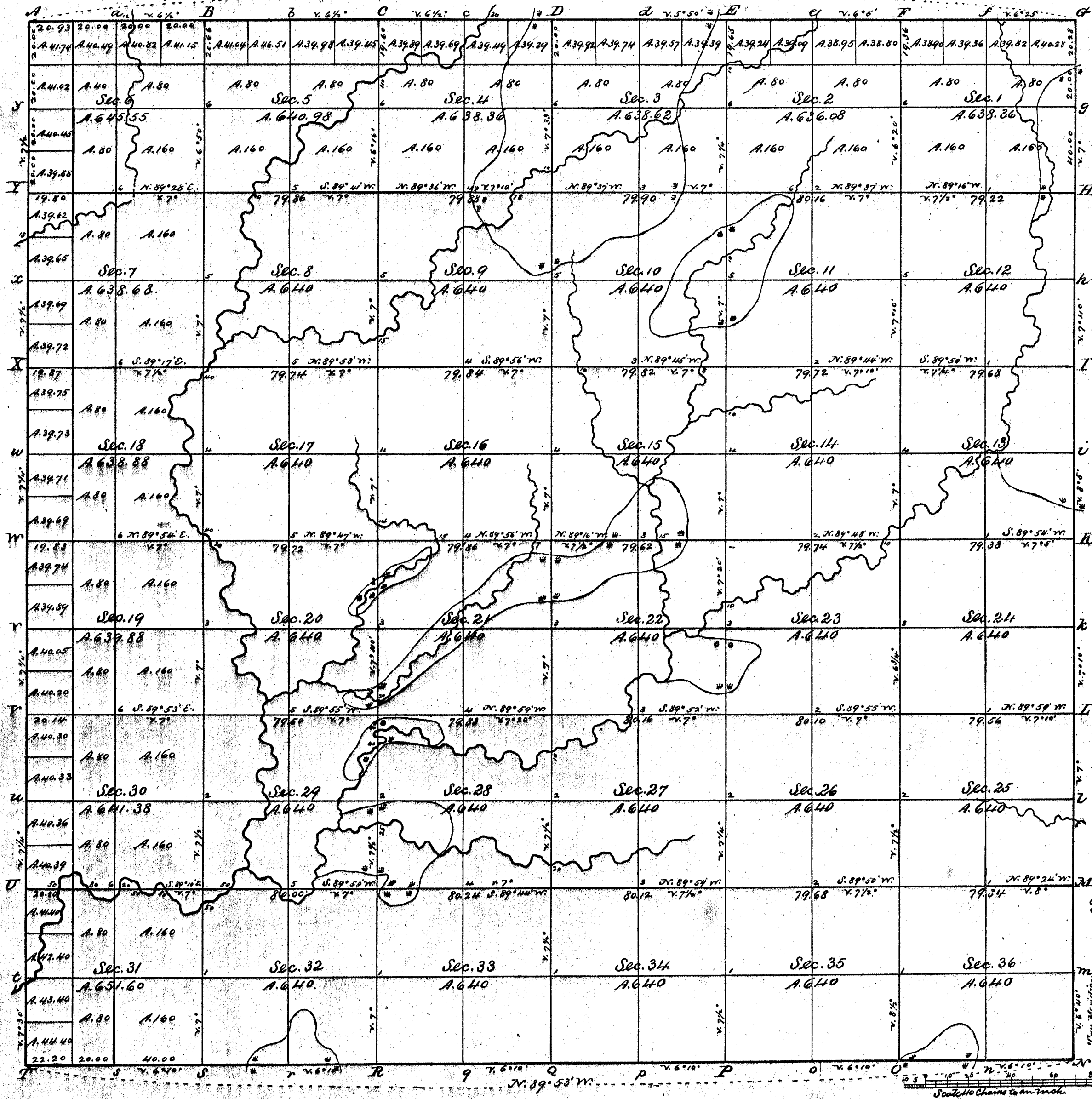


Township N^o 32 N. Range N^o 9 East, 4th Mer.

Read with Sur Gen's letter of Nov. 12, 1860



Total number of Acres 23,048.37

Survey Designated	By Whom Surveyed	Date of Contract	Amount of Survey Ac. Chs. Lks.	When Surveyed	When Charged in the Sur Gen's Acct.
Township lines	H. C. Fellows	May 13 th 1859	18. 03. 41	June 1859	
"	James M. Marsh	May 10 th 1851	6. 00. 00	July 1851	
Subdivisions	H. C. Fellows	July 30 th 1860	59. 74. 43	September 1860	

The above Map of Township No. 32 North of Range No. 9 East 4th Principal Meridian Wisconsin is strictly conformable to the field notes of the survey thereof on file in this Office which have been examined and approved.

Surveyor General's Office
Dubuque Nov. 12th 1860

Warner Lewis
Sur Gen.

RECORD # 30485
LANGLADE COUNTY SURVEYORS OFFICE
DATE FILED: 3-16-96 BY: RSM