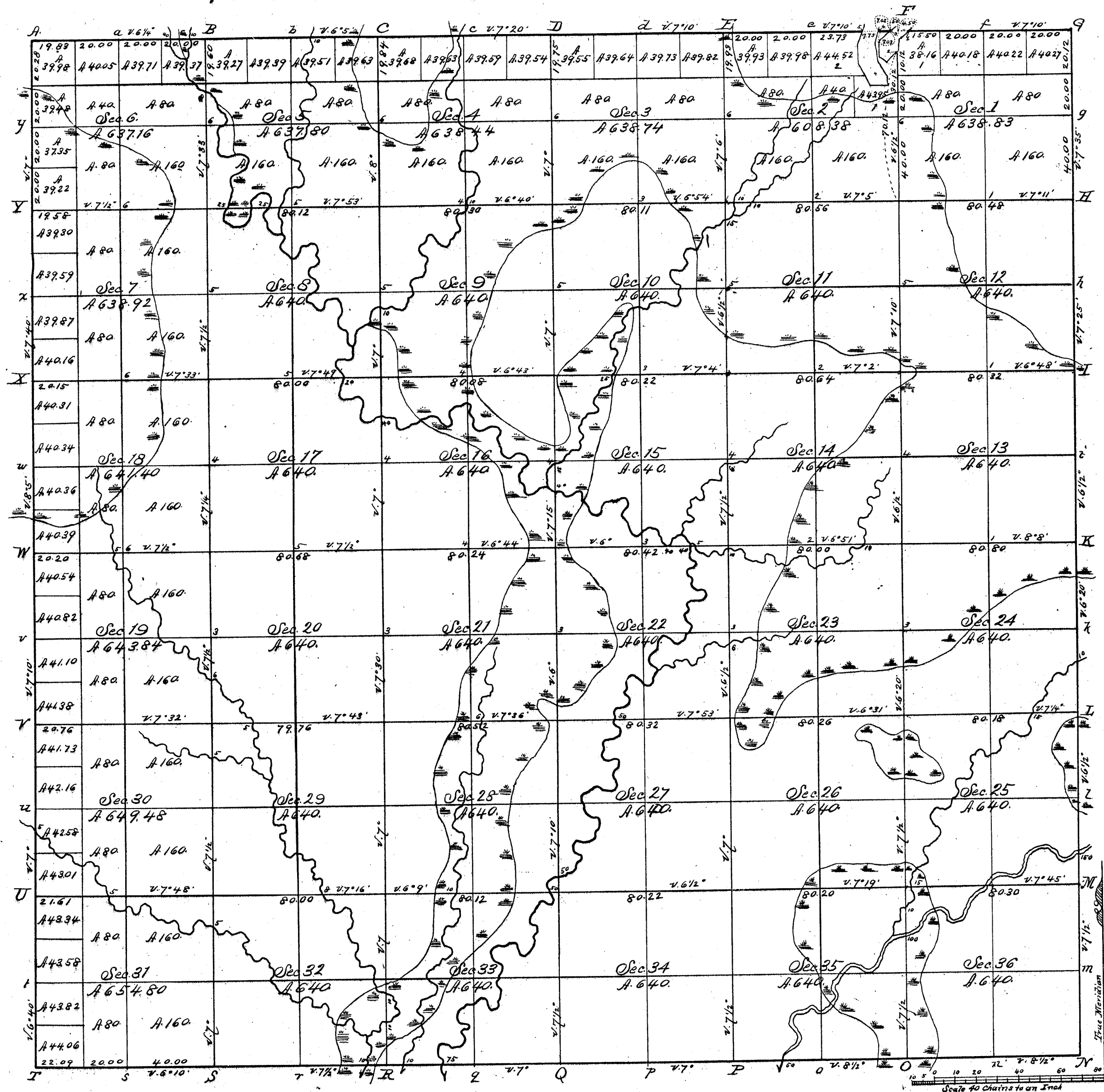


Township N^o 32 N. Range N^o 10 East 4th Mer.

Recd with Sur Genl. letter of Nov. 12th 1860



Total number of Acres 23027.79

| Surveys Designated | By Whom Surveyed | Date of Contract | Amount of Surveys In. Ch ^s Ir ^s | When Surveyed | When Charged in the Sur ^g Gen ^l 's Acc ^t |
|--------------------|------------------|----------------------------|--|----------------|--|
| Township lines | H. C. Fellows | May 13 th 1859 | 24. 02. 32 | June 1859 | |
| Subdivisions | H. C. Fellows | July 30 th 1860 | 61. 20. 35 | September 1860 | |

The above Map of Township N. 32 North of Range N. 10 East. 4th Principal Meridian Wisconsin is strictly conformable to the field notes of the survey thereof on file in this Office which have been examined and approved.
 Surveyor General's Office
 Dubuque. Nov. 12th 1860.

Warner Lewis
 Sur^g Gen^l

RECORD # 30486
 LANGLADE COUNTY SURVEYORS OFFICE
 DATE FILED: 3-16-98 BY: AKM

15147