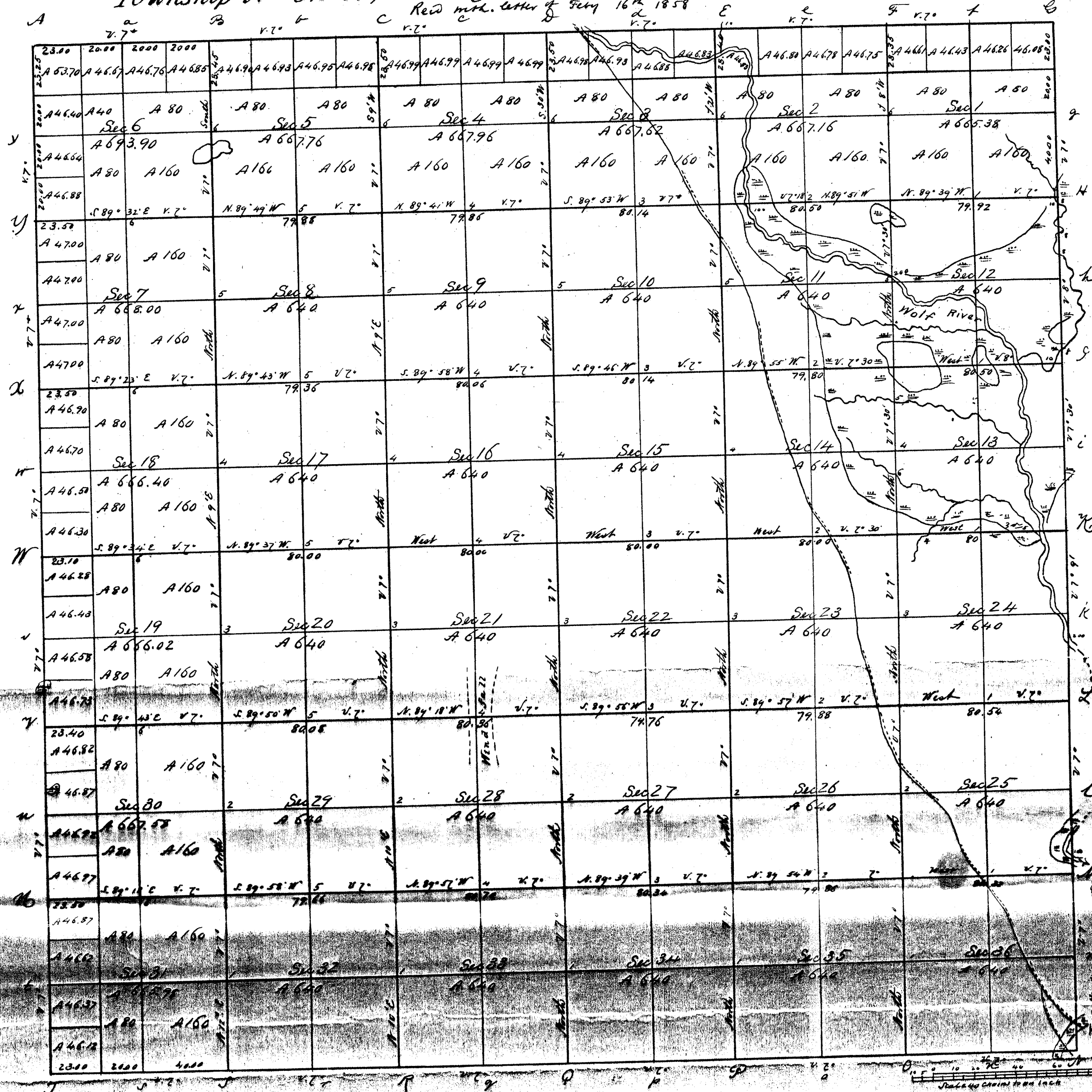


Township N<sup>o</sup> 32 N, Range N<sup>o</sup> 13 East of 4<sup>th</sup> Mer.

Read with letter of Feby 16<sup>th</sup> 1858



3363.76 acres

Total number of Acres 23363.76

| Survey Designated | By Whom Surveyed | Date of Contract           | Amount of Survey<br>N. C. S. | When Surveyed   | When Charged in<br>the Sur's Grant Acct |
|-------------------|------------------|----------------------------|------------------------------|-----------------|---|
| Township lines    | Alfred Millard   | June 23 <sup>rd</sup> 1857 | 24 u 12 u 25                 | July & Aug 1857 |   |
| Subdivisions      | Alfred Millard   | Aug 13 <sup>th</sup> 1857  | 60 u 35 u 86                 | September 1857  |   |

The above Map of Township No 32 North of Range No 13 East of 4<sup>th</sup> Mer. Principal Meridian Wisconsin is strictly conformable to the field notes of the survey thereon file in this Office which have been examined and approved  
 Surveyor General's Office  
 Salangué Feby 16<sup>th</sup> 1858  
 Warner Lewis  
 Sur Genl.

RECORD # 30488

LANGDADE COUNTY SURVEYORS OFFICE

DATE FILED: 3-16-98 BY: AKM