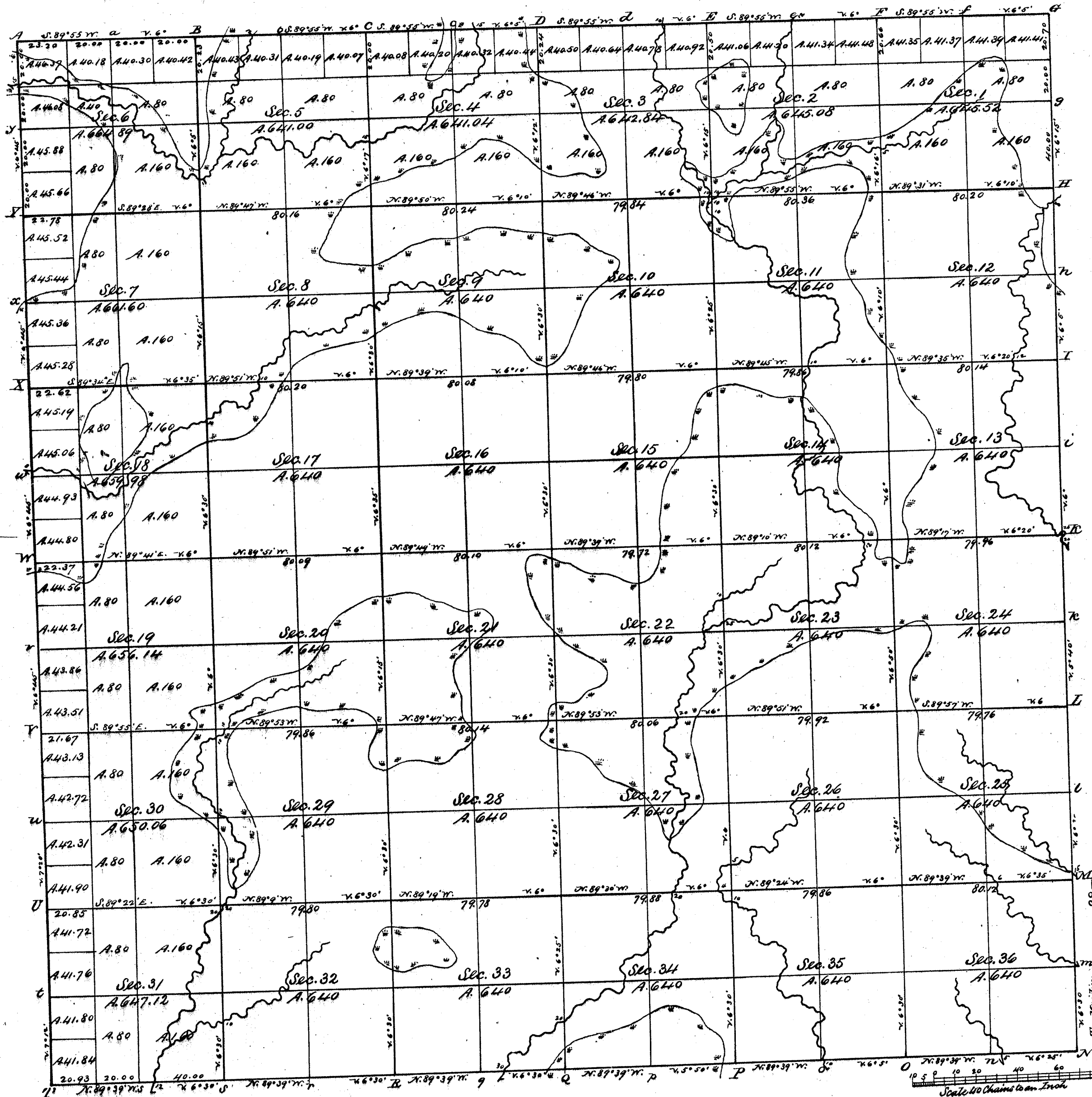


Township N^o 33 N. Range N^o 9 East of the 4th Mer.

Read with Sur Gen's letter of May 23, 1863



Total number of Acres 23,153.27

Surveys Designated	By Whom Surveyed	Date of Contract	Amount of Surveys Ac. Ch. In.	When Surveyed	When Closed in the Sur. Gen's Acct
Township lines	Jos. M. Marsh	May 10 th 1851	6 - 00 - 00	July & Aug. 1851	
	Hiram C. Fellows	May 13 th 1859	18 - 04 - 83	June 1859	
Subdivisions	H. C. Fellows	April 27 th 1863	60 - 12 - 03	Sept. & Oct. 1860	

The above Map of Township N^o 33 North of Range N^o 9 East of 4th Principal Meridian State of Wisconsin is strictly conformable to the field notes of the survey thereof on file in this Office which have been examined and approved.

Surveyor General's Office
Dubuque May 23rd 1863

Henry A. Wittse
Sur. Gen.