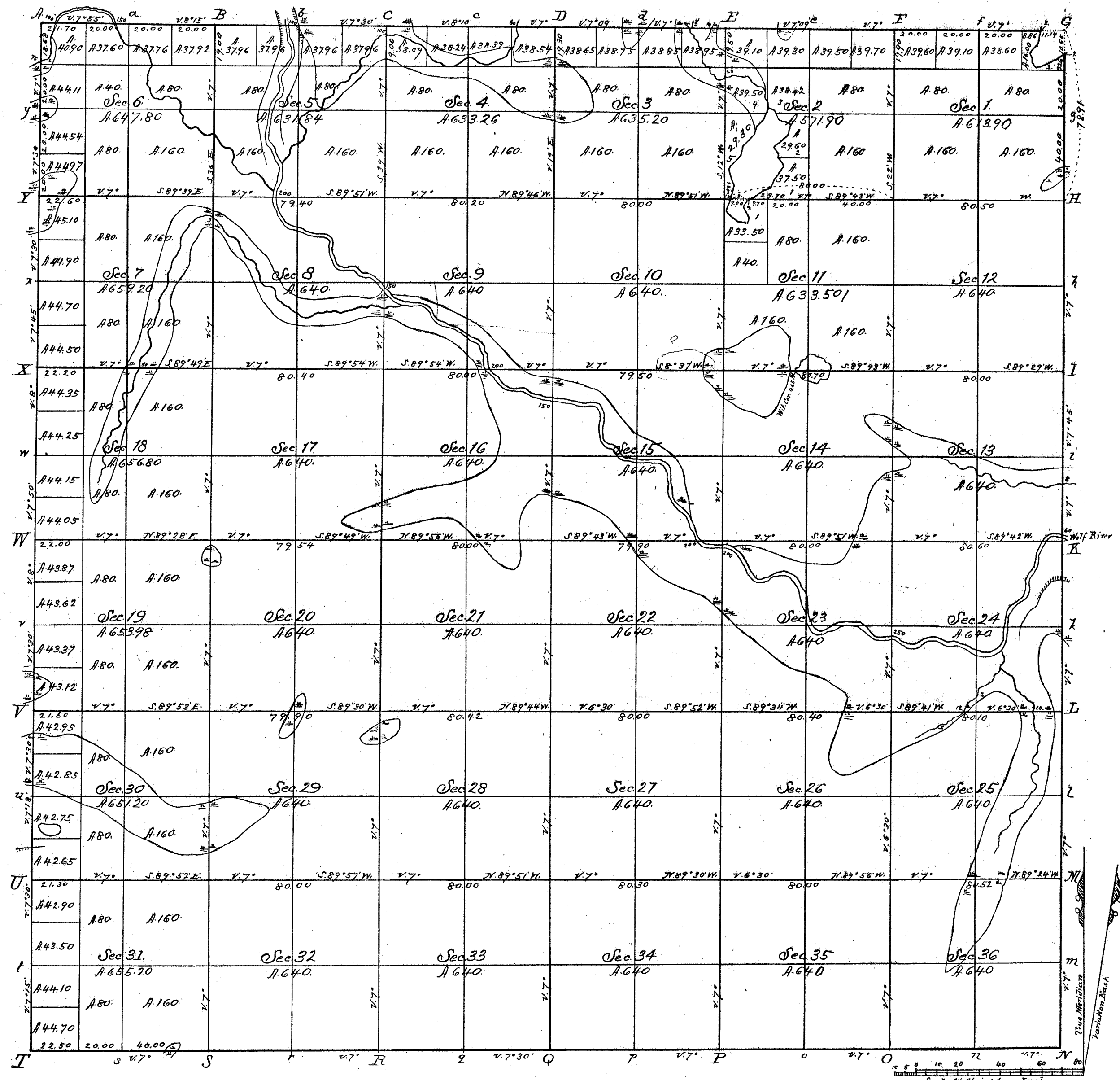




Rec'd with Sur. Gen's letter of Sept 8th 1865.
 Township N^o 33 N. Range N^o 12 East of the 4th Mer.



16000
 640
 15360

2 27 37 00 8 00 00

Total number of Acres 23003.78.

Surveys Designated	By Whom Surveyed	Date of Contract	Amount of Survey M. Ch ^s R ^s	When Surveyed	When Charged in the Sur. Gen's Acct.
Township lines	Alfred Millard	June 30 th 1857	24 " 01 " 84	September 1857	
Subdivisions	Jas. L. Nowlin and Harden Nowlin	August 11 th 1864	62 " 43 " 58	May 1865	
	15, 147				

The above Map of Township N^o 33 North of Range N^o 12 East 4th Principal Meridian State of Missouri is strictly conformable to the field notes of the survey thereof on file in this Office which have been examined and approved.

Surveyor General's Office
 Dubuque, Sept. 8th 1865

Henry A. Wiltse
 Sur. Genl.