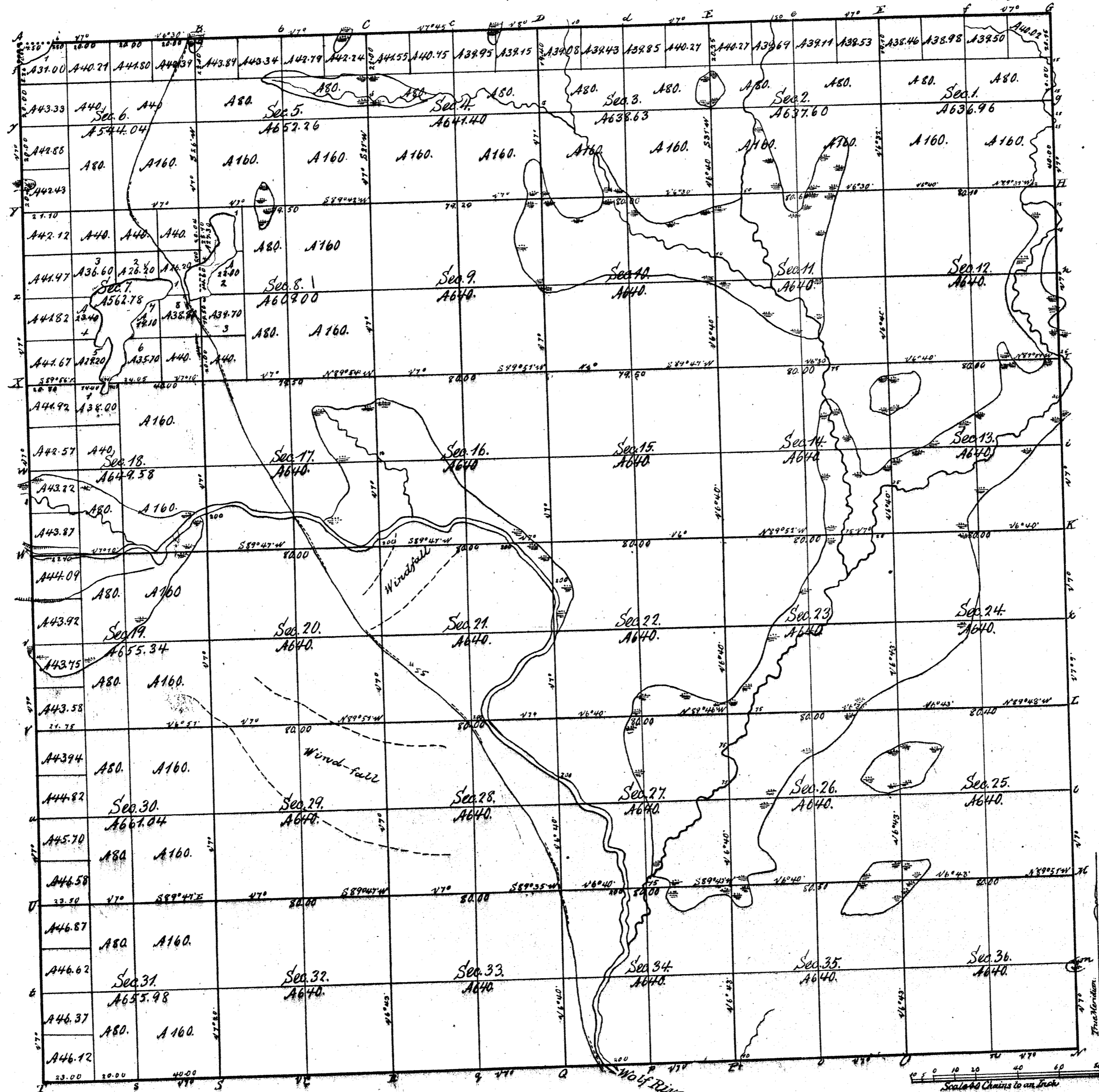


Township No 33 N. Range No 13 East of the 4<sup>th</sup> Mer.

Rec'd with sum. under letter of July 11, 1865.

60210K  
 1100  
 1200  
 1300  
 1400  
 1500  
 1600  
 1700  
 1800  
 1900  
 2000  
 2100  
 2200  
 2300  
 2400  
 2500  
 2600  
 2700  
 2800  
 2900  
 3000  
 3100  
 3200  
 3300  
 3400  
 3500  
 3600  
 3700  
 3800  
 3900  
 4000  
 4100  
 4200  
 4300  
 4400  
 4500  
 4600  
 4700  
 4800  
 4900  
 5000  
 5100  
 5200  
 5300  
 5400  
 5500  
 5600  
 5700  
 5800  
 5900  
 6000  
 6100  
 6200  
 6300  
 6400  
 6500  
 6600  
 6700  
 6800  
 6900  
 7000  
 7100  
 7200  
 7300  
 7400  
 7500  
 7600  
 7700  
 7800  
 7900  
 8000  
 8100  
 8200  
 8300  
 8400  
 8500  
 8600  
 8700  
 8800  
 8900  
 9000  
 9100  
 9200  
 9300  
 9400  
 9500  
 9600  
 9700  
 9800  
 9900  
 10000



16000  
 6400  
 15360

Total number of Acres 22904.61

Survey's Designated	By Whom Surveyed	Date of Contract	Amount of Survey's Ac. Ch <sup>s</sup> Lk <sup>s</sup>	When Surveyed	When Chartered in the Sur <sup>r</sup> Gen <sup>l</sup> Acct
Township lines	Alfred Millard	June 30th 1857	24 - 04 - 06	August 1857	
Subdivisions	Jas. E. Nowlin with Mr. J. E. Nowlin	August 11th 1864	62 - 39 - 49	April & May 1865	

The above Map of Township No 33 North of Range No 13 East of 4th Principal Meridian State of Wisconsin is strictly conformable to the field notes of the survey thereof on file in this Office which have been examined and approved.  
 Surveyor General's Office }  
 Dubuque July 11th 1865. }  
 Henry A. Wittse  
 Sur. Genl.

