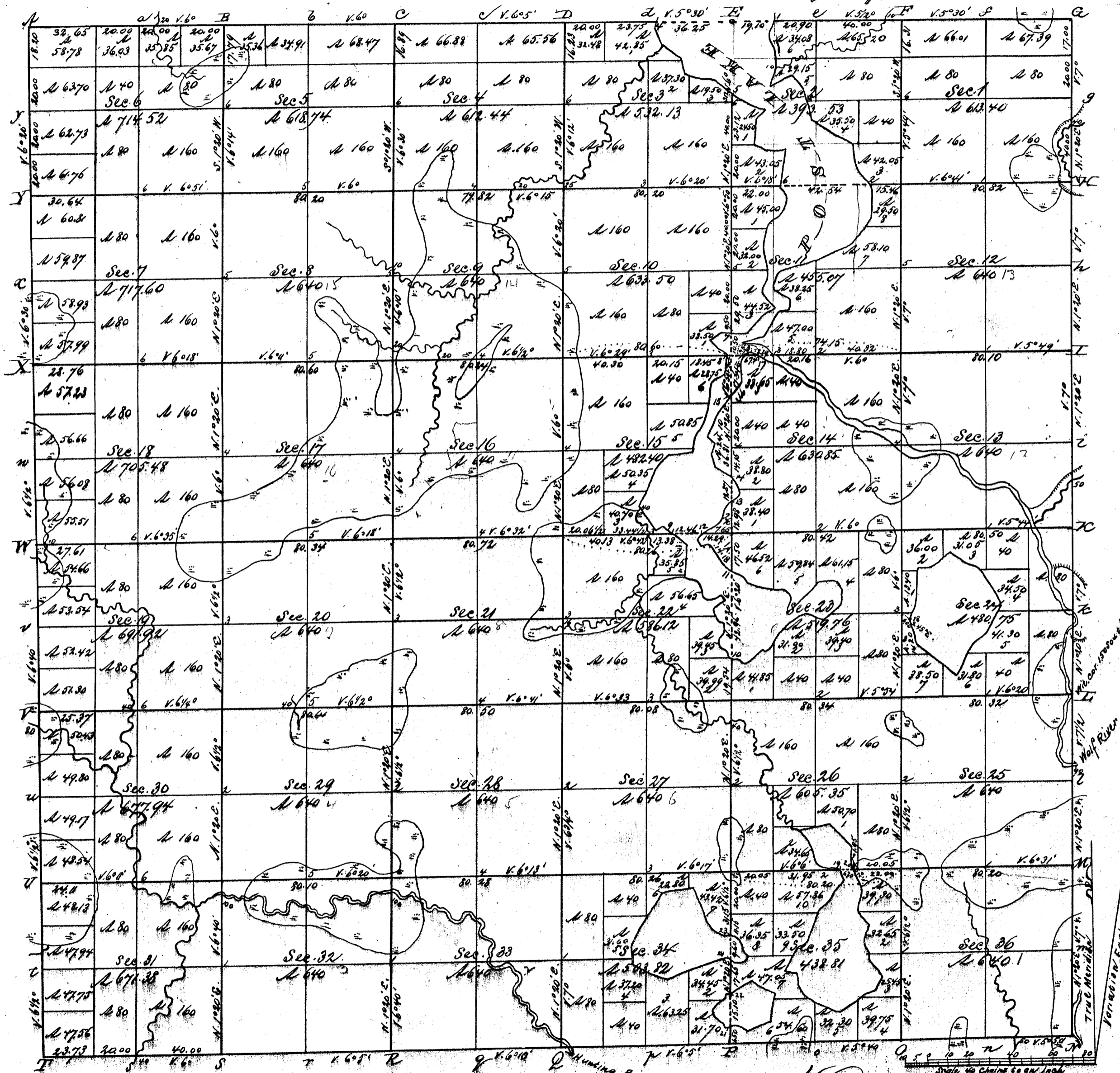




Township No. 34 N. Range No. 11 East 4th Mer.
 Sur. Gen's letter 20.072 of Feb'y 4th 1860



VOL. 147
 Total number of Acres 21,885.57

Surveys Designated	By Whom Surveyed	Date of Contract	Amount of Surveys	When Surveyed	When Charged in
			M. Ch ² L ²		Ch ² L ² Ac ²
Township lines	Alfred Hillard	Jan'y 30 th 1857	5 771.00	Sept. 1857	
"	W. B. Fillars	13 th May 1859	18 141.58	June & July 1859	
Subdivisions	Wm. C. Daugherty	13 th May 1859	770 67 3/4	July 1859	

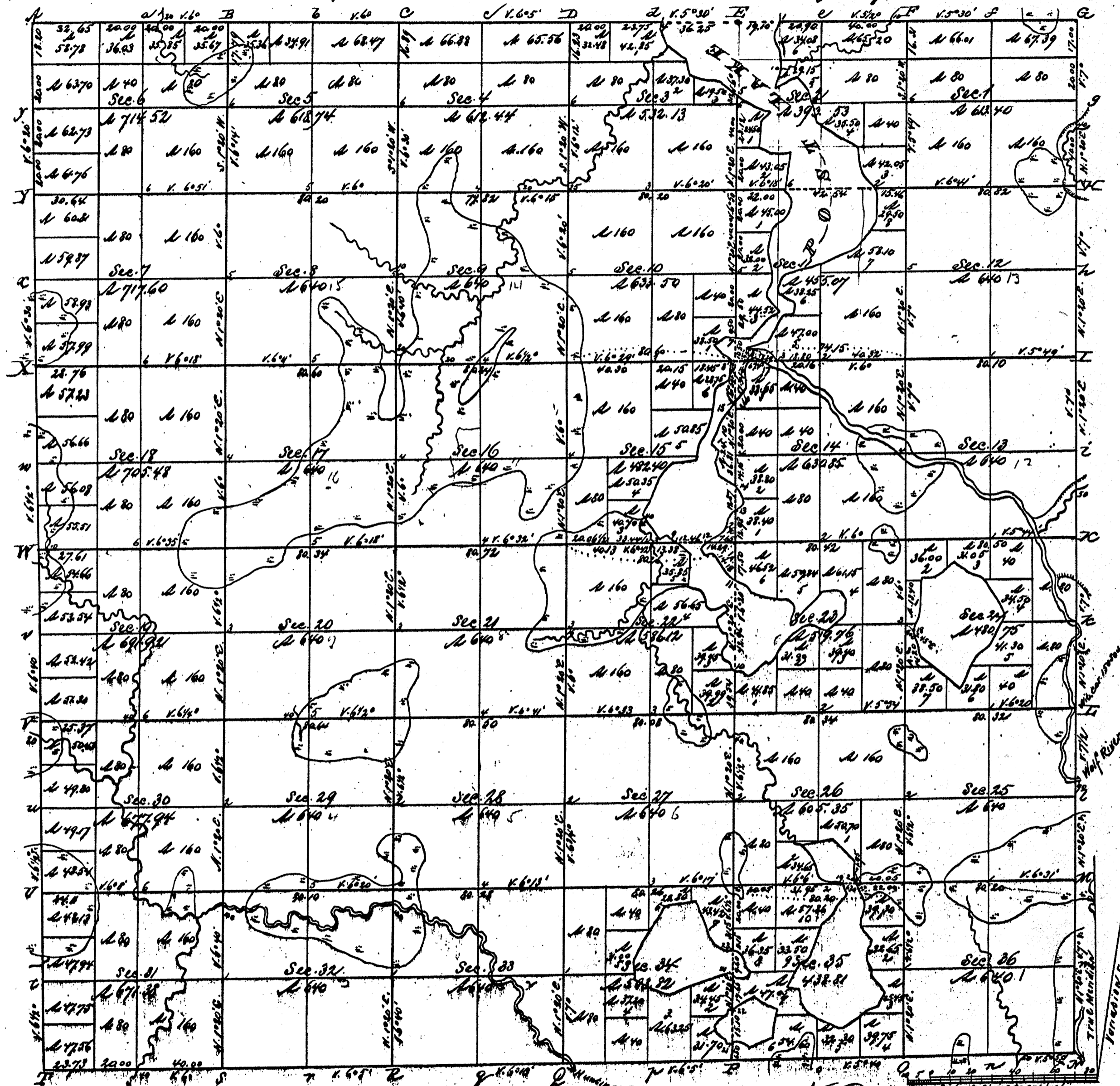
The above Map of Township No. 34 North of Range No. 11 East 4th Meridian
 Principal Meridian Wisconsin, is hereby confirmed to the field notes
 of the survey thereof on file in this Office, which have been examined and approved
 Surveyor General's Office
 Dubuque, Feb'y 4th 1860
 Warner Lewis
 Sur. Gen.

RECORD # 30498
 LANGLADE COUNTY SURVEYORS OFFICE
 DATE FILED 3-16-98 BY: AKM

640
 32
 1975
 1975



Township N^o 34 N. Range N^o 11 East 4th Mer.
 Sec. Grant later 20 072 S. of 4th Mer. 4th 1860



VOL. 147

Total number of Acres 21,885.57

Surveys Designated By Whom Surveyed	Date of Contract	Amount of Survey	When Surveyed	When Checked in
No. Ch ^d L ^d				Surveyor's Office
Township 1100	Alfred Bullard	5,771.00	Sept. 1857	
	W. H. Fillmore	18,114.58	June & July 1859	
Subdivisions	Wm. C. Daugherty	771.67	July 1859	

The above Map of Township N^o 34 North of Range N^o 11 East 4th Mer. (Bingham's Meridian) is for all parts conformable to the field notes of the survey shown on file in this Office which have been examined and approved.

Surveyor General's Office
 Dubuque, July 4th 1860

Warner, Sec'y

RECORD # 30498
 LANGLADE COUNTY SURVEYORS' OFFICE
 DATE FILED 3-16-98 BY [Signature]

640
32

1915