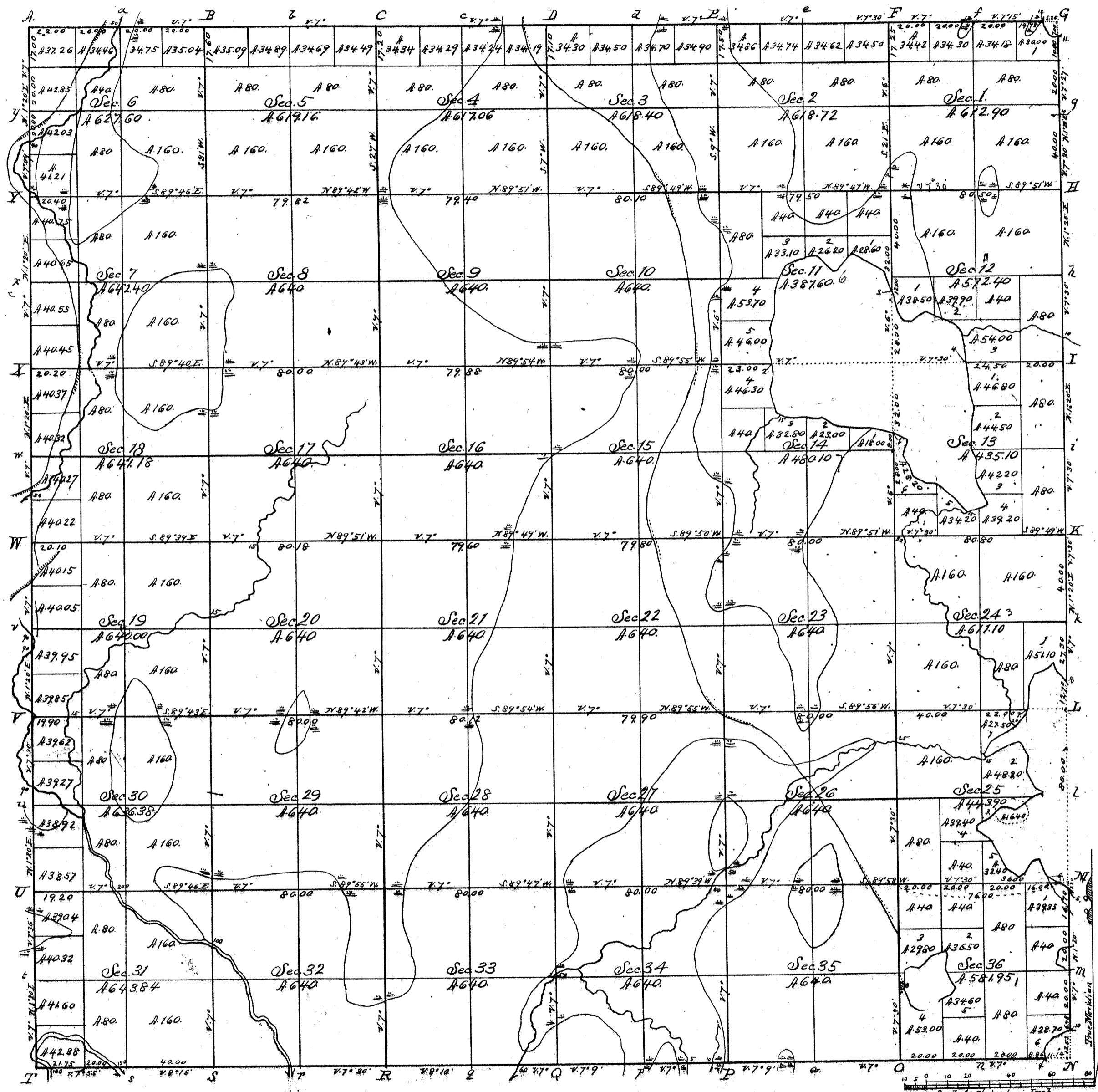


Rec'd with Sur Gen's letter of Sept. 8th 1865.

Township N^o 34 N. Range N^o 12 East of the 4th Mer.



1200
1150

Total number of Acres 21949.79

Surveys Designated	By Whom Surveyed	Date of Contract	Amount of Surveys M. Ch. Lk.	When Surveyed	When Charged in the Sur. Gen's Acct.
Township lines	Alfred Millard	June 30 th 1857	23.77.75	August 1857	
Subdivisions	J. L. Nowlin	August 11 th 1864	66.48.43	May & June 1865	

The above Map of Township N^o 31 North of Range N^o 12 East of the 4th Principal Meridian State of Wisconsin is strictly conformable to the field notes of the survey thereof on file in this Office which have been examined and approved.

Surveyor General's Office
Dubuque September 8th 1865

Benny A. Wittse
Sur. Gen.