

149

# 264119 CHIP N' DALE LAKESIDE CONDOMINIUM PLAT AND PLANS

THIS PLAT AND PLANS REPLACES, CORRECTS, AND SUPERCEDES THE PLAT AND PLANS RECORDED IN FILE NO. 146 AS DOCUMENT NO. 259463 OF LANGLADE COUNTY RECORDS. SUBJECT TO DECLARATION RECORDED MARCH 11, 1982, IN THE LANGLADE COUNTY REGISTER OF DEEDS OFFICE, AS DOCUMENT NO. 259464.

UNITS AFFECTED ARE: UNIT NOS. 29, 43, 44, 53

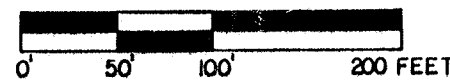
UNIT I

REGISTERS OFFICE  
LANGLADE COUNTY, WIS.  
Received for record *2nd Aug*  
A.D. 1983 at 4:20 P.M.  
Recorded in Entry Record  
*Pandra Zuehl*  
Register of Deeds

Recording Fee Paid *75.00*



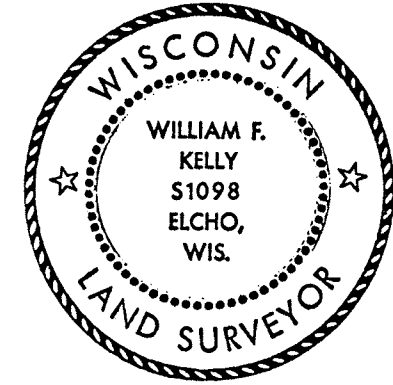
MAGNETIC



I, William F. Kelly, Registered Land Surveyor, hereby certify that this plat is a correct representation of the condominium described and the identification and location of each unit and the common elements can be determined from the plat.

This certificate applies to sheets 1 through 5.

This meets requirements of Wisconsin Statutes, Chap. 703.11, par. 4.



*William F. Kelly*  
7-29-83

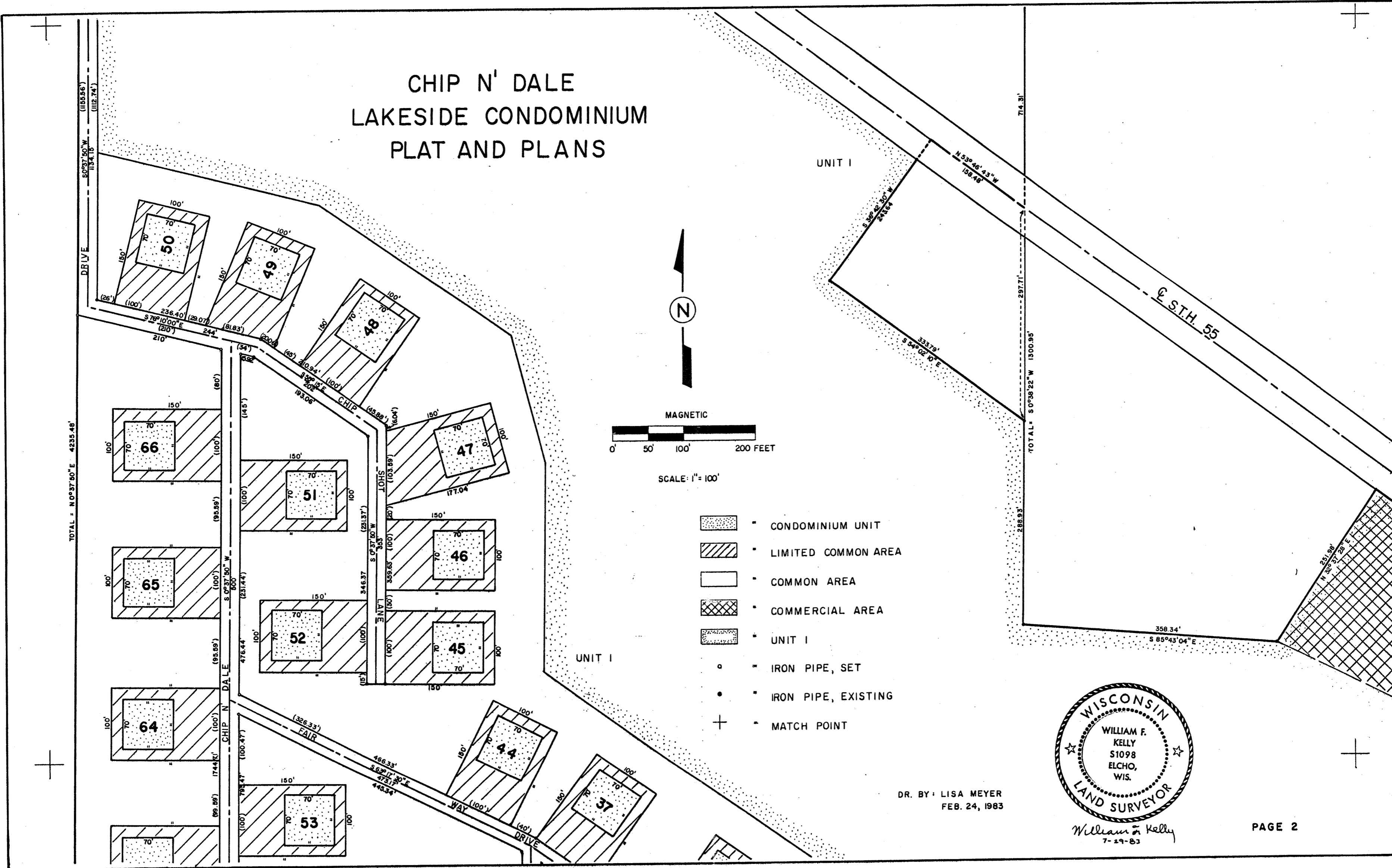
- = CONDOMINIUM UNIT
- = LIMITED COMMON AREA
- = COMMON AREA
- = COMMERCIAL AREA
- = UNIT I
- = IRON PIPE, SET
- = IRON PIPE, EXISTING
- = MATCH POINT

DR. BY: LISA MEYER  
JULY 1, 1983

PAGE 1

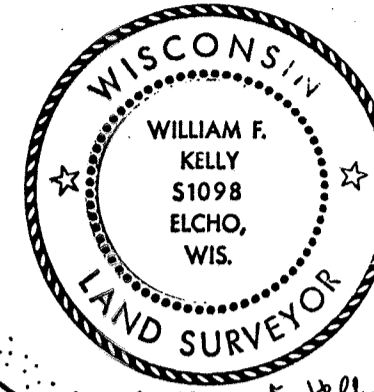
RECORD # *30503*  
LANGLADE COUNTY SURVEYORS OFFICE  
DATE FILED: \_\_\_\_\_ BY: \_\_\_\_\_

# CHIP N' DALE LAKESIDE CONDOMINIUM PLAT AND PLANS

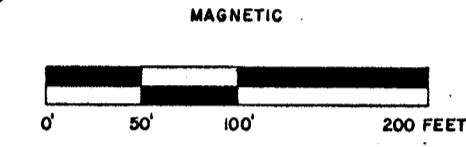
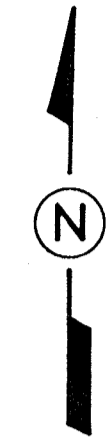


DR. BY: LISA MEYER  
FEB. 24, 1983

# CHIP N' DALE LAKESIDE CONDOMINIUM PLAT AND PLANS



- = CONDOMINIUM UNIT
- = LIMITED COMMON AREA
- = COMMON AREA
- = COMMERCIAL AREA
- = UNIT I
- = IRON PIPE, SET
- = IRON PIPE, EXISTING
- = MATCH POINTS

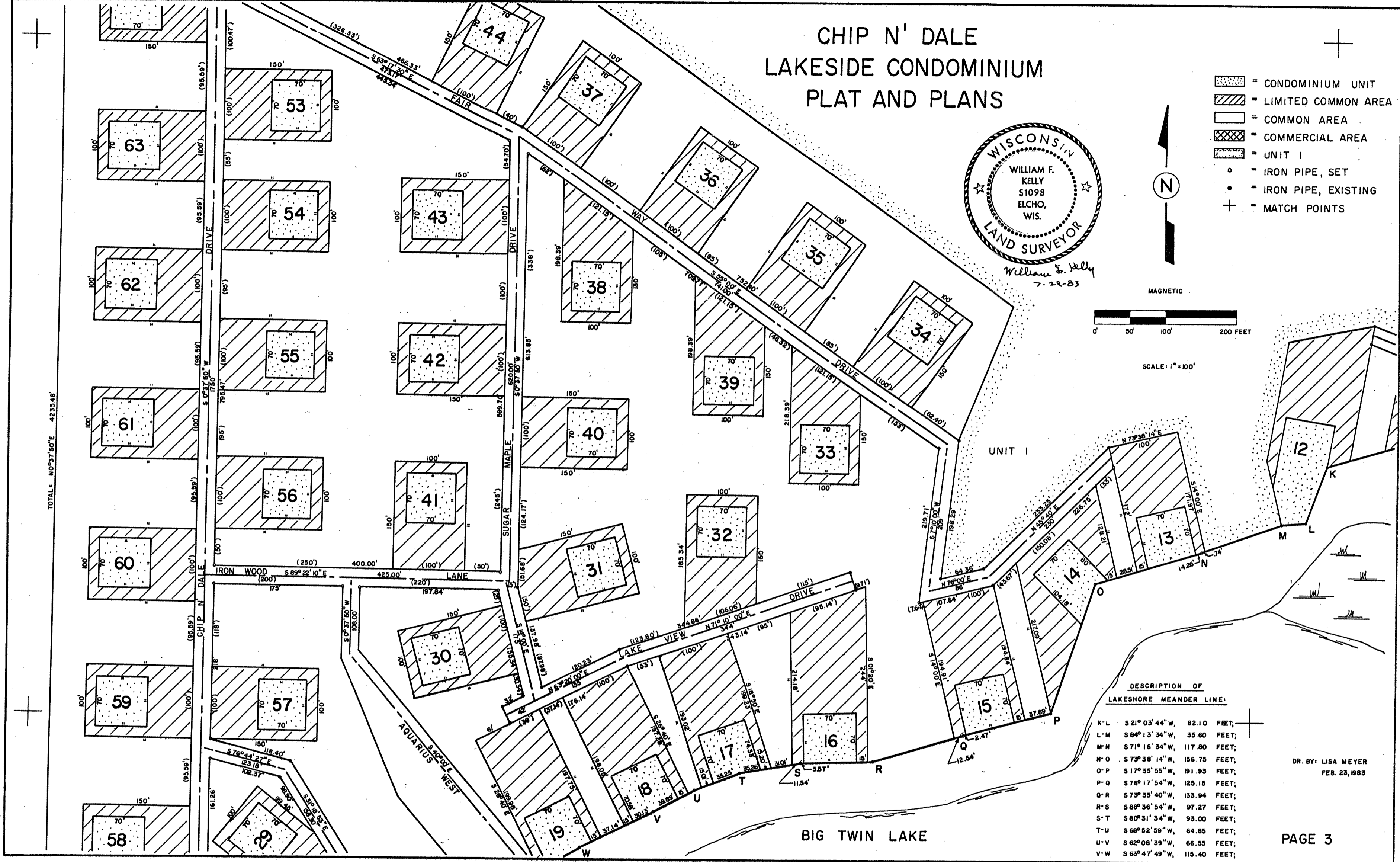


SCALE: 1" = 100'

**DESCRIPTION OF  
LAKESHORE MEANDER LINE:**

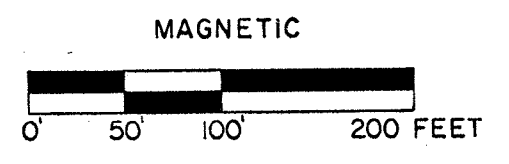
K-L	S 21° 03' 44" W,	82.10 FEET;
L-M	S 84° 13' 34" W,	35.60 FEET;
M-N	S 71° 16' 34" W,	117.80 FEET;
N-O	S 73° 38' 14" W,	156.75 FEET;
O-P	S 17° 35' 55" W,	191.93 FEET;
P-Q	S 76° 17' 54" W,	125.15 FEET;
Q-R	S 73° 35' 40" W,	133.94 FEET;
R-S	S 80° 36' 54" W,	97.27 FEET;
S-T	S 80° 31' 34" W,	93.00 FEET;
T-U	S 68° 52' 59" W,	64.85 FEET;
U-V	S 62° 08' 39" W,	66.55 FEET;
V-W	S 63° 47' 49" W,	115.40 FEET;

DR. BY: LISA MEYER  
FEB. 23, 1983

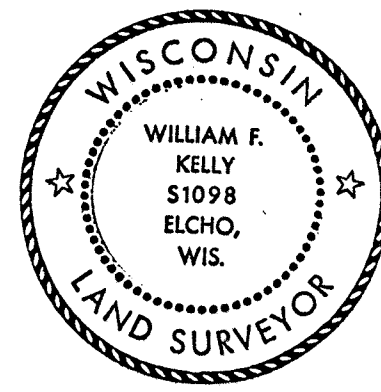


TOTAL N 0° 37' 50" E 4233.48'

# CHIP N' DALE LAKESIDE CONDOMINIUM PLAT AND PLANS



MAGNETIC  
SCALE: 1" = 100'



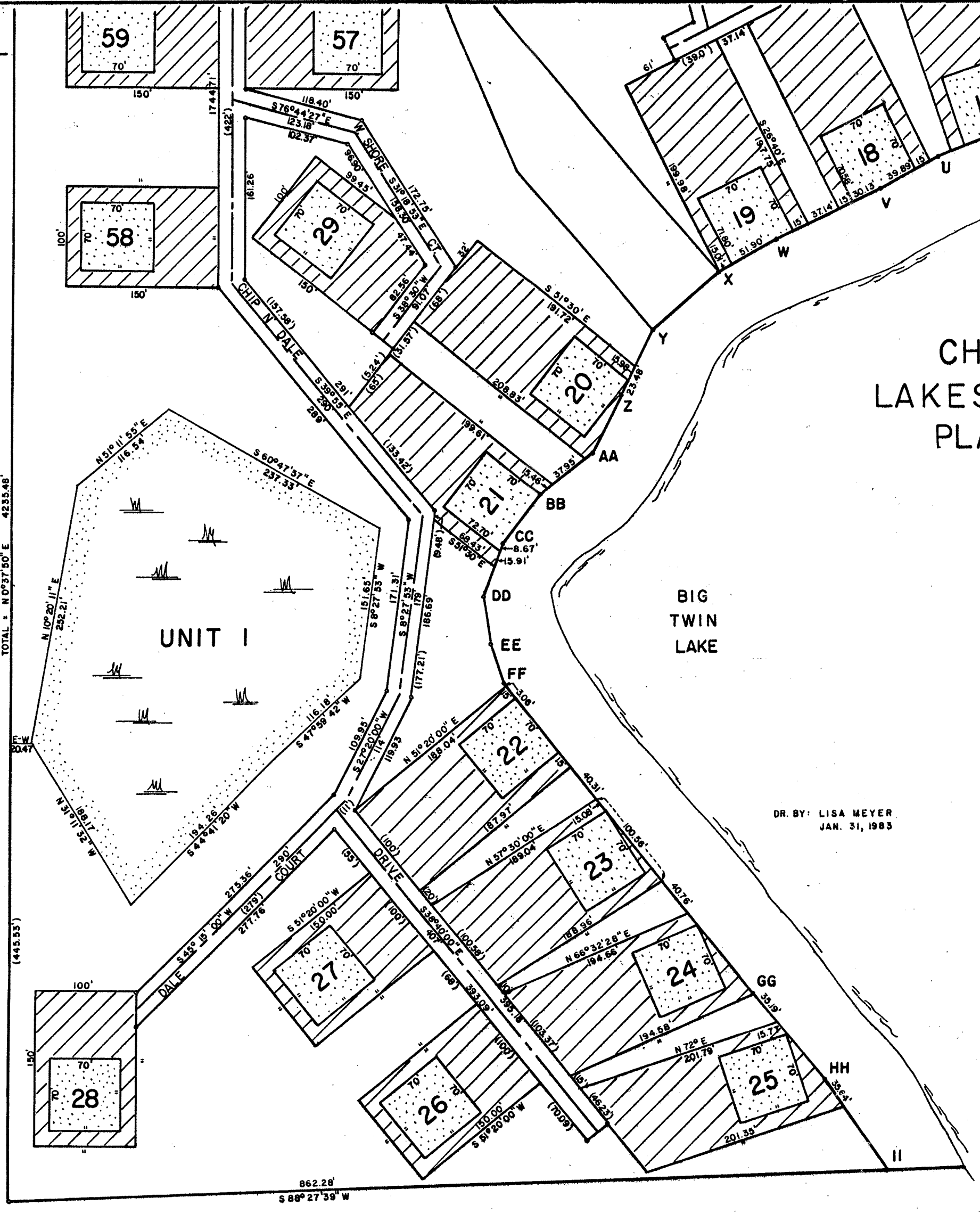
*William F. Kelly*  
7-22-83

DR. BY: LISA MEYER  
JAN. 31, 1983

DESCRIPTION OF LAKESHORE  
MEANDER LINE:

P - Q	S 76°17'54" W,	125.15 FEET;
Q - R	S 73°35'40" W,	133.94 FEET;
R - S	S 88°36'54" W,	97.27 FEET;
S - T	S 80°31'34" W,	93.00 FEET;
T - U	S 68°52'59" W,	64.85 FEET;
U - V	S 62°08'39" W,	66.55 FEET;
V - W	S 63°47'49" W,	115.40 FEET;
W - X	S 6°11'19" W,	66.90 FEET;
X - Y	S 49°19'49" W,	87.70 FEET;
Y - Z	S 24°11'19" W,	58.65 FEET;
Z - AA	S 27°59'29" W,	71.50 FEET;
AA - BB	S 52°34'09" W,	60.56 FEET;
BB - CC	S 38°41'19" W,	61.83 FEET;
CC - DD	S 18°56'37" W,	57.20 FEET;
DD - EE	S 7°54'06" E,	49.25 FEET;
EE - FF	S 19°27'26" E,	42.10 FEET;
FF - GG	S 38°37'46" E,	388.05 FEET;
GG - HH	S 40°21'56" E,	106.40 FEET;
HH - II	S 34°36'59" E,	110.07 FEET;

- = CONDOMINIUM UNIT
- = LIMITED COMMON AREA
- = COMMON AREA
- = COMMERCIAL AREA
- = UNIT "I"
- = IRON PIPE, SET
- = IRON PIPE, EXISTING
- = MATCH POINTS


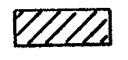
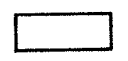

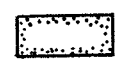





# CHIP N' DALE LAKESIDE CONDOMINIUM PLAT AND PLANS

## Description of 10' Wide Access Easement:

Beginning at the NW corner of Certified Survey, Vol. 2, Page 224, Langlade County Records; thence N53°30'00"W, 11.25 feet; thence S09°13'06"W, 337.00 feet; thence S72°04'24"E, 265.52 feet; thence S00°46'47"W, to the shore of Big Twin Lake (approx. 310 feet); thence easterly along the shore of Big Twin Lake until intersecting with the prolongation of the east line of said Certified Survey (approx. 10 feet); thence N00°46'47"E, to the SE corner of said Certified Survey (approx. 320 feet); thence N72°04'24"W, 264.32 feet; thence N09°13'06"E, 323.25 feet to the point of beginning.

Said access easement is not coextensive.

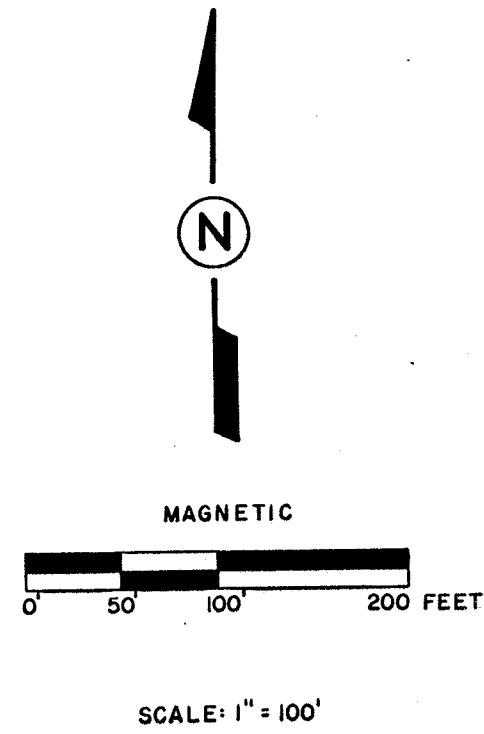
-  - CONDOMINIUM UNIT
-  - LIMITED COMMON AREA
-  - COMMON AREA
-  - COMMERCIAL AREA
-  - UNIT I
-  - IRON PIPE, SET
-  - IRON PIPE, EXISTING
-  - MATCH POINT



William F. Kelly  
7-29-83

DR. BY: LISA MEYER  
JUNE 29, 1983

PAGE 5



### DESCRIPTION OF LAKESHORE MEANDER LINE:

A-B	N 87° 53' 50" W,	102.91 FEET;	H-I	N 10° 05' 26" W,	140.30 FEET;
B-C	S 38° 32' 44" W,	24.51 FEET;	I-J	N 58° 50' 11" W,	135.85 FEET;
C-D	S 68° 13' 59" W,	22.15 FEET;	J-K	S 74° 43' 44" W,	127.00 FEET;
D-E	S 83° 17' 44" W,	225.10 FEET;	K-L	S 21° 03' 44" W,	82.10 FEET;
E-F	S 83° 06' 14" W,	154.10 FEET;	L-M	S 84° 13' 34" W,	35.60 FEET;
F-G	S 72° 32' 19" W,	105.65 FEET;	M-N	S 71° 16' 34" W,	117.80 FEET;
G-H	N 4° 29' 41" W,	70.00 FEET;	N-O	S 73° 38' 14" W,	156.75 FEET;

