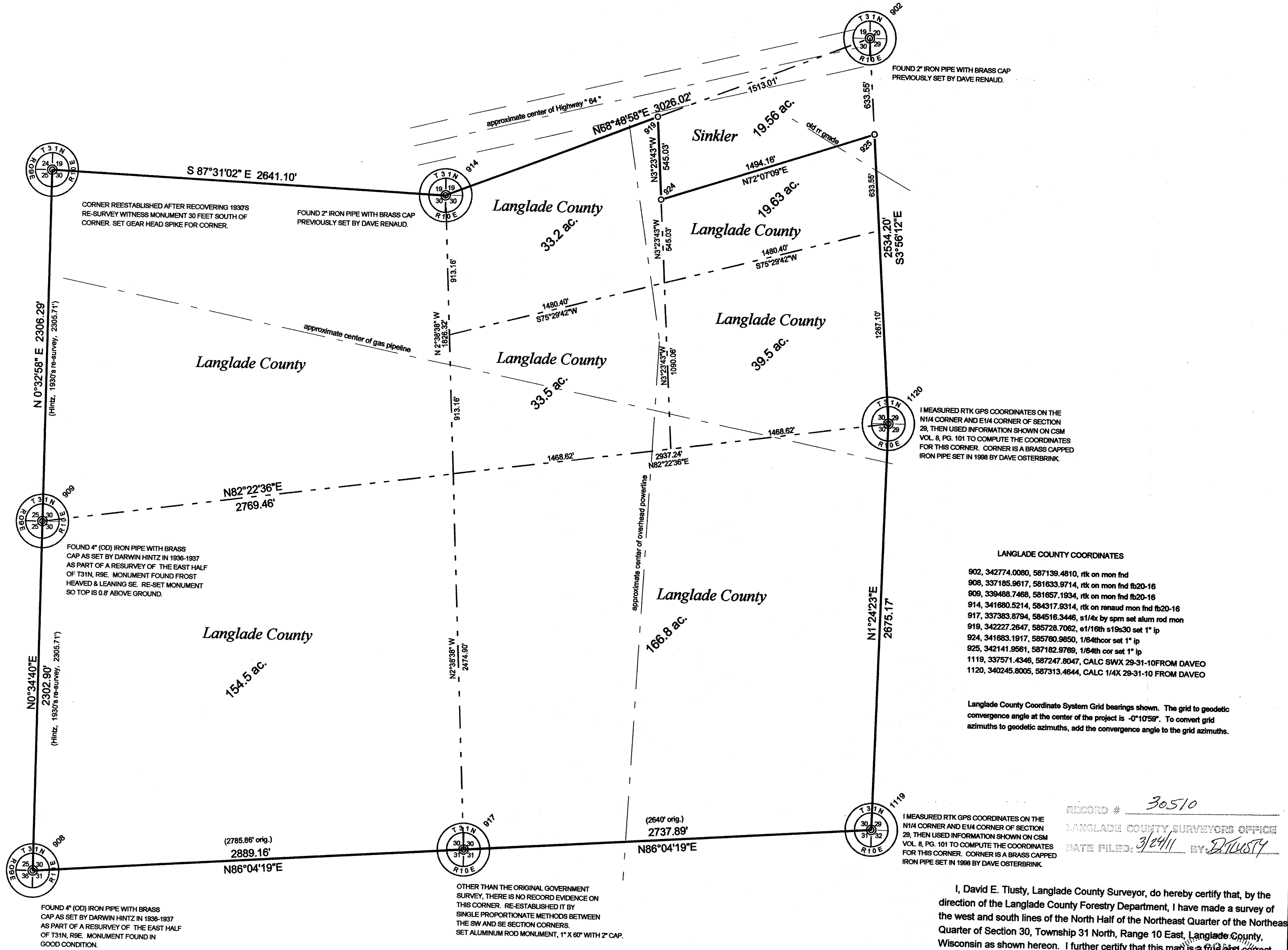


Section 30, Township 31 North, Range 10 East

LANGLADE COUNTY COORDINATE SYSTEM GRID BEARINGS SHOWN



LANGLADE COUNTY COORDINATES

902	342774.0060, 587139.4810, rtk on mon fnd
908	337185.9617, 581633.9714, rtk on mon fnd fb20-16
909	339488.7468, 581657.1934, rtk on mon fnd fb20-16
914	341680.5214, 584317.9314, rtk on renaud mon fnd fb20-16
917	337383.8794, 584516.3446, s1/4x by spm set alum rod mon
919	342227.2647, 585728.7062, e1/16th s19s30 set 1" ip
924	341683.1917, 585760.9850, 1/8th cor set 1" ip
925	342141.9561, 587182.9769, 1/8th cor set 1" ip
1119	337571.4346, 587247.8047, CALC SWX 29-31-10 FROM DAVEO
1120	340245.8005, 587313.4644, CALC 1/4X 29-31-10 FROM DAVEO

Langlade County Coordinate System Grid bearings shown. The grid to geodetic convergence angle at the center of the project is -0°10'59". To convert grid azimuths to geodetic azimuths, add the convergence angle to the grid azimuths.

I MEASURED RTK GPS COORDINATES ON THE N1/4 CORNER AND E1/4 CORNER OF SECTION 29, THEN USED INFORMATION SHOWN ON CSM VOL. 8, PG. 101 TO COMPUTE THE COORDINATES FOR THIS CORNER. CORNER IS A BRASS CAPPED IRON PIPE SET IN 1998 BY DAVE OSTERBRINK.

I, David E. Tlusty, Langlade County Surveyor, do hereby certify that, by the direction of the Langlade County Forestry Department, I have made a survey of the west and south lines of the North Half of the Northeast Quarter of the Northeast Quarter of Section 30, Township 31 North, Range 10 East, Langlade County, Wisconsin as shown hereon. I further certify that this map is a true and correct representation of said survey and that this survey is correct to the best of my knowledge and belief.

03/16/2011 *David E. Tlusty*
 David E. Tlusty, RLS
 Langlade County Surveyor

THIS DOCUMENT WAS CREATED ON LANGLADE COUNTY COMPUTER EQUIPMENT THAT WAS PURCHASED WITH THE ASSISTANCE OF A GRANT RECEIVED FROM THE WISCONSIN LAND INFORMATION BOARD.	
LANGLADE COUNTY LAND RECORDS & REGULATIONS DEPARTMENT	
NO.	DATE
DESCRIPTION	BY
REVISIONS	
SCALE: 1" = 500'	
DRAWN BY: D. TLUSTY	
REF. FILE:	
DATE: 03/22/05	RECORD # 30510
TOWN OF: ACKLEY	LANGLADE COUNTY SURVEYORS OFFICE DATE FILED: 3/24/11 BY: <i>D. Tlusty</i>
TOWN CODE: 002	
LOCATION:	
SECTION: 30	
TOWNSHIP: 31	
RANGE: 10	
DWG. #: .J731N/303110	