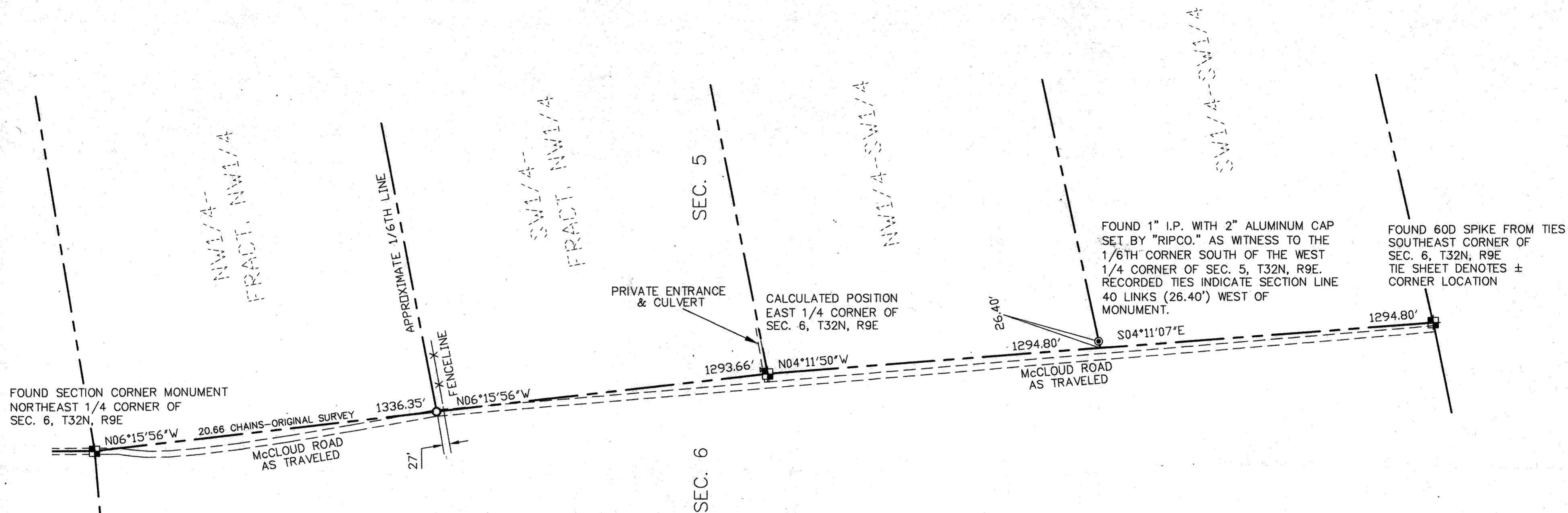


PLAT OF SURVEY

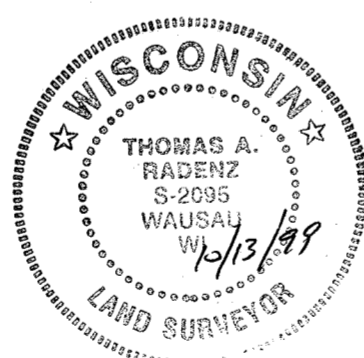
of the west line of Section 5, Township 32 North, Range 9 East, Town of Vilas, Langlade County, Wisconsin.



SURVEYOR'S CERTIFICATE

I, THOMAS A. RADENZ, REGISTERED LAND SURVEYOR, HEREBY REPRESENT THAT I HAVE MADE THIS SURVEY BY THE DIRECTION OF JIM CAMPBELL. I FURTHER REPRESENT THAT THIS IS A TRUE AND CORRECT REPRESENTATION OF SAID SURVEY MADE, AND THAT THIS SURVEY IS CORRECT TO THE BEST OF MY KNOWLEDGE.

Thomas A. Radenz
 REMEDIAL ENGINEERING, INC.
 THOMAS A. RADENZ (AGENT)
 CHIEF OF SURVEYS
 R.L.S. 2095



SURVEYOR'S NOTE

REI was contracted to set the Northwest corner of the Southwest 1/4 of the Northwest 1/4 of Section 5. In doing so we anticipated working from the Section Corner tie sheets and the previous survey of record. Our field measurements of these corner locations varied greatly from the original survey.

Due to the variation in the measurements we prorated the corner locations from the existing monuments. We found a 60d spike at the Southwest corner of the section. The tie sheet indicates that this position was not verified. We found a "Ripco" monument at the South 1/16 corner and a section corner monument at the Northwest corner.

The location of the West 1/4 corner of Section 5 was calculated holding the found Southwest corner of Section 5 and a point 40 links West of the found Ripco monument at the 1/16th corner South of the West 1/4 corner. I extended this line Northerly the same distance as between these two points to the calculated location of the West 1/4 corner. The location of the 1/16th corner North of the West 1/4 corner was calculated by prorating the distance between the calculated West 1/4 corner and the measured Northwest corner of Section 5 against the original chainage for this line.

We monumented the Northwest corner of the Southwest 1/4 of the Northwest 1/4 of Section 5 based on this information. This location may vary should if future measurements are made to better define the location of the East 1/4 and Southwest corner of Section 5. The current needs of our client did not permit us to do so.



SCALE: 1" = 300'

LEGEND	
○	1" x 24" IRON PIPE WEIGHING 1.13 ILBS/LIN. FT. SET

RECORD # 30511
 LANGLADE COUNTY SURVEYORS OFFICE
 DATE FILED: 11/25/00 BY: P. Westby

DATE	REVISION	BY	CHK'D

CIVIL & ENVIRONMENTAL ENGINEERING, SURVEYING
 4080 N. 20th AVENUE
 WAUSAU, WISCONSIN 54401
 PHONE: (715) 675-9784 FAX: (715) 675-4060
 EMAIL: rei@pcpros.net

PLAT OF SURVEY
 FOR
JIM CAMPBELL
 LANGLADE COUNTY, WISCONSIN

DESIGNED BY:	CHECKED BY: T.A.R.
SURVEYED BY: K.R.F.	APPROVED BY:
DRAWN BY: J.S.	DATE: 10/1/99
SHEET	PROJECT No.
1 OF 1	#1606

J:\DRAFTING\1606\1606PLAT_REV.DWG