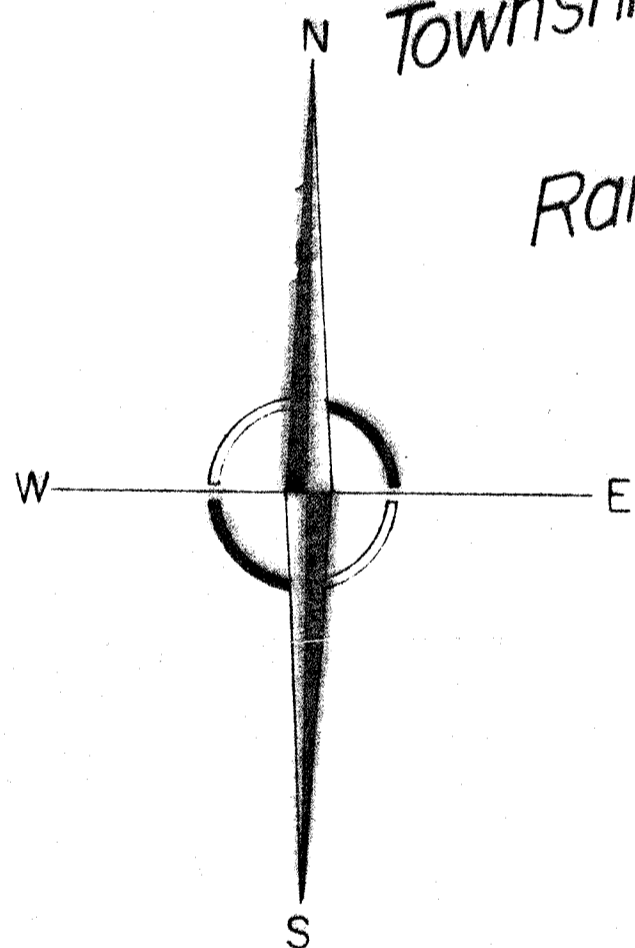
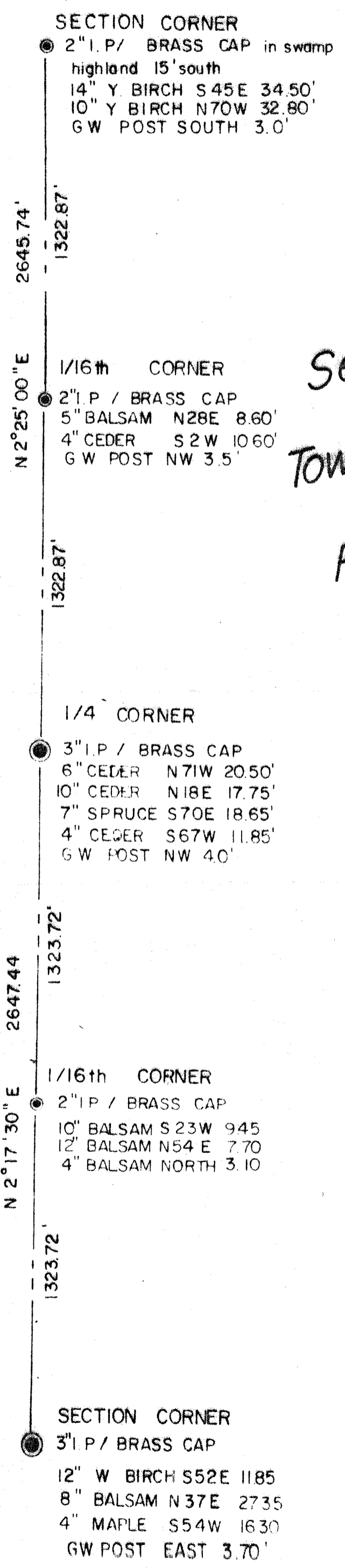


30512



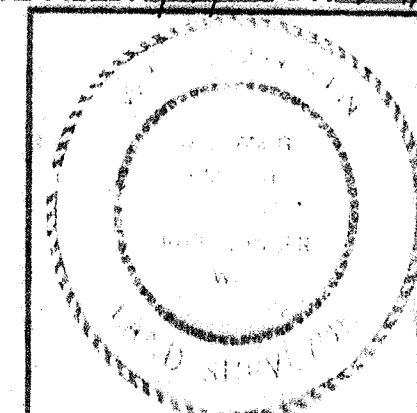
Section 1
Township 34 North
Range 8 East

Section 6
Township 34 North
Range 9 East



RECORD # 30512
 LANGLADE COUNTY SURVEYORS OFFICE
 DATE FILED: 1/25/00 BY: D. Hudy

RECEIVED AT LINCOLN COUNTY
 COURTHOUSE THIS 2nd DAY
 OF May 1980
Joe Thibe
 TAX DESCRIPTION OFFICE



LINCOLN COUNTY FORESTRY
 DEPARTMENT
 MERRIL, WISCONSIN 54452
 SCALE 1" = 400' DATE 3/13/80 DWN BY W.I.
 DWG. NO. 7079B GENISOT AND ASSOCIATES, INC
 RHINELANDER, WIS.