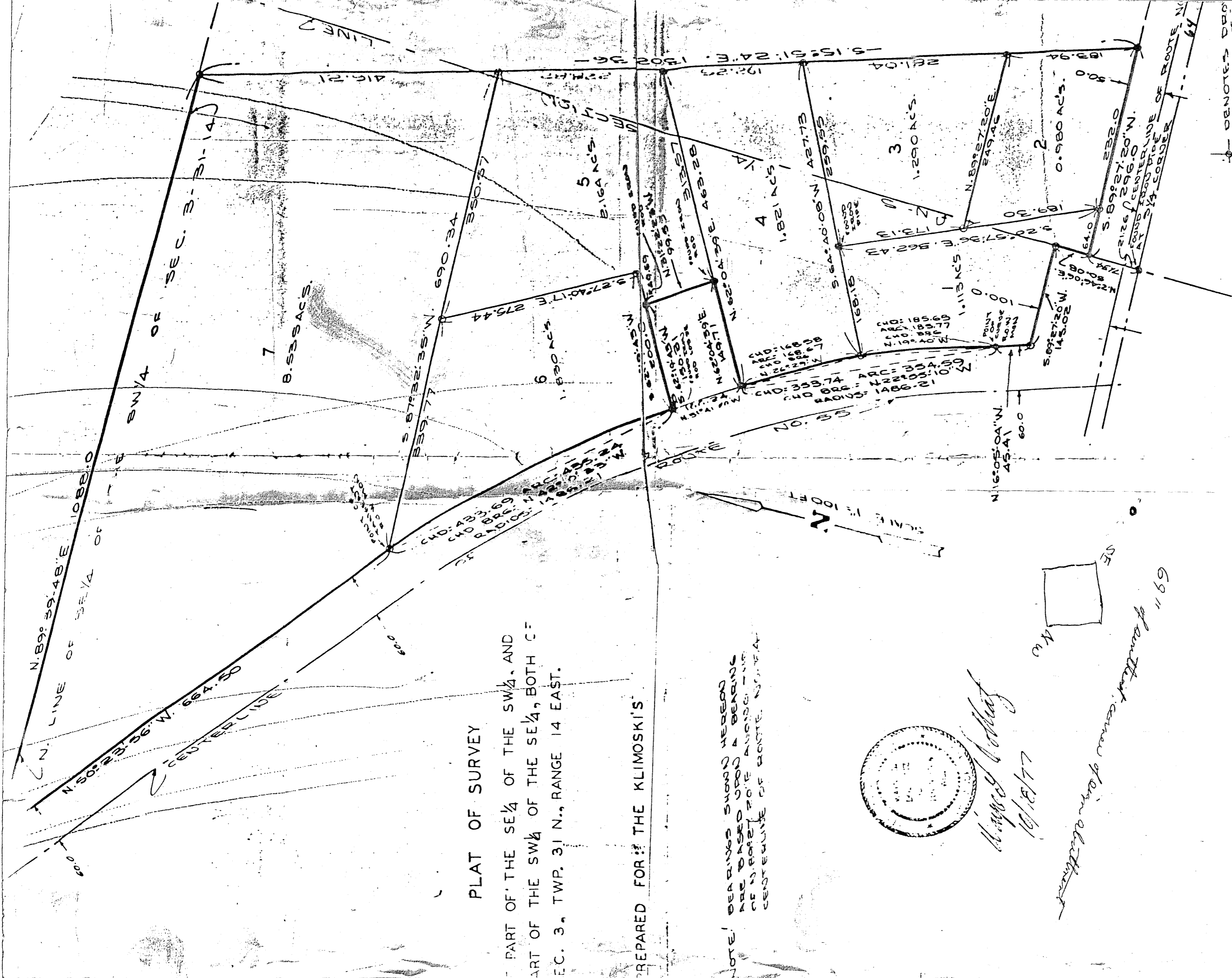


KLIMOSKI PART OF A QUAD



PLAT OF SURVEY
 PART OF THE SE 1/4 OF THE SW 1/4, AND
 PART OF THE SW 1/4 OF THE SE 1/4, BOTH C-
 EC. 3, TWP. 31 N., RANGE 14 EAST.

PREPARED FOR: THE KLIMOSKI'S

NOTE! BEARINGS SHOWN HEREON
 ARE BASED UPON A BEARING
 OF N. 89° 39' 48\"/>



Handwritten signature
 11/13/77



Handwritten note: of south corner of quarter