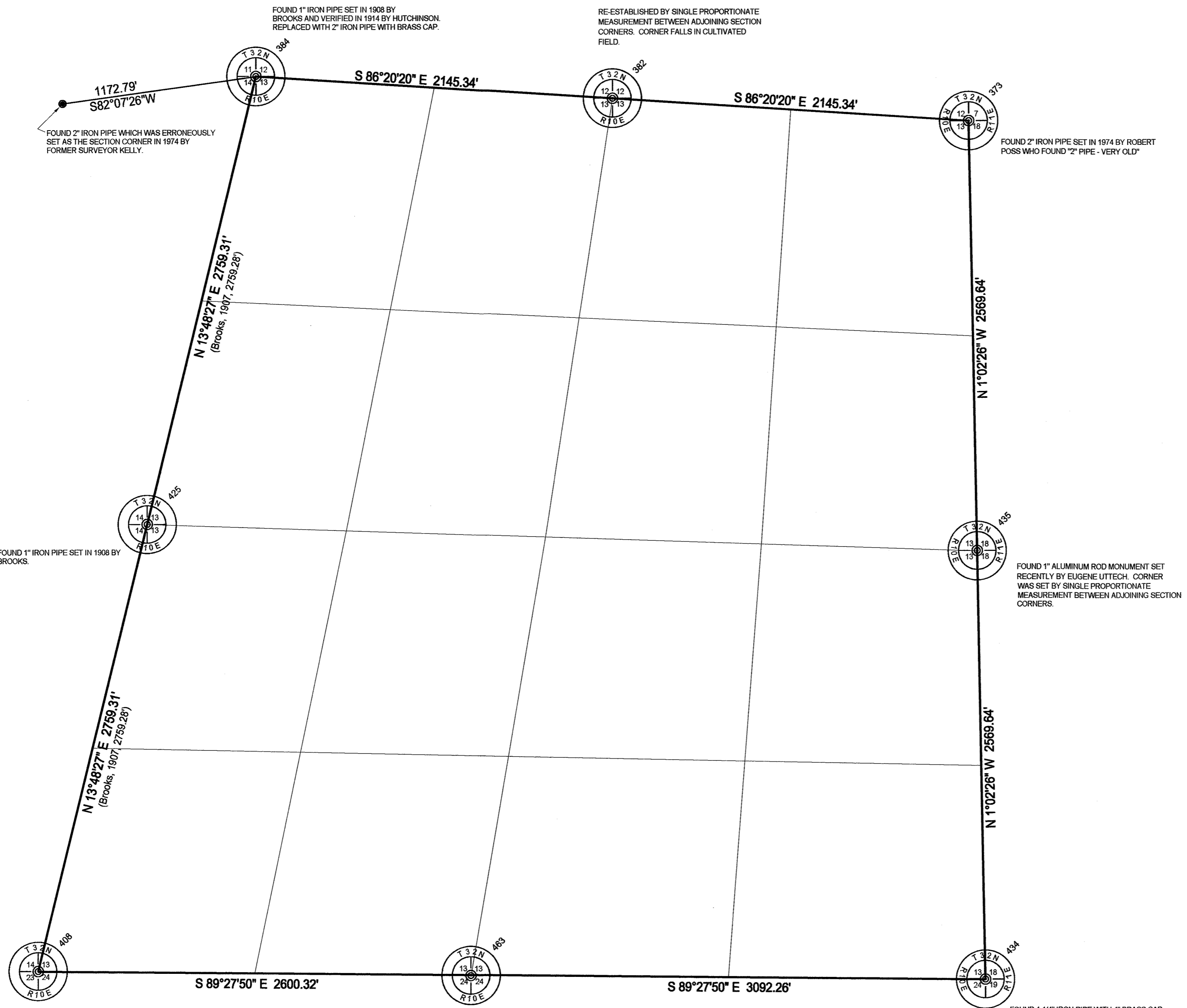


Section 13, Township 32 North, Range 10 East

LANGLADE COUNTY COORDINATE SYSTEM GRID BEARINGS SHOWN



FOUND 2" IRON PIPE WHICH WAS ERRONEOUSLY SET AS THE SECTION CORNER IN 1974 BY FORMER SURVEYOR KELLY.

FOUND 1" IRON PIPE SET IN 1908 BY BROOKS AND VERIFIED IN 1914 BY HUTCHINSON. REPLACED WITH 2" IRON PIPE WITH BRASS CAP.

RE-ESTABLISHED BY SINGLE PROPORTIONATE MEASUREMENT BETWEEN ADJOINING SECTION CORNERS. CORNER FALLS IN CULTIVATED FIELD.

FOUND 2" IRON PIPE SET IN 1974 BY ROBERT POSS WHO FOUND "2" PIPE - VERY OLD

FOUND 1" IRON PIPE SET IN 1908 BY BROOKS.

FOUND 1" ALUMINUM ROD MONUMENT SET RECENTLY BY EUGENE LITTECH. CORNER WAS SET BY SINGLE PROPORTIONATE MEASUREMENT BETWEEN ADJOINING SECTION CORNERS.

SET CORNER ON AN EXTENSION OF A LINE FROM FROM THE NE CORNER THROUGH THE E1/4 CORNER AND AT DOUBLE THAT DISTANCE WHICH AGREES EXCEPTIONALLY WITH BROOKS'. SET 1" X 60" ALUM. MON. WITH 2" ALUM. CAP IN BAD ASH SWAMP.

CORNER ESTABLISHED AT THE INTERSECTION OF A STRAIGHT LINE BETWEEN THE NE AND NW CORNERS OF SECTION 24, AND AN EXTENSION OF A LINE OF EXISTING OCCUPATION (ROAD CENTERLINE AND PARTIAL FENCE) ON THE SOUTH PART OF THE N-S QUARTER LINE OF SECTION 24.

FOUND 1 1/4" IRON PIPE WITH 4" BRASS CAP SET IN 1993 BY D. HIGGINBOTHAM FOR OLD SURVEY INFO OF HUTCHINSONS IN SECTION 19.

I, David E. Tlusty, Langlade County Surveyor, do hereby certify that I have made a survey of the perimeter of Section 13, T.32N., R.10E., Town of Peck, as shown hereon. I further certify that this map is a true and correct representation of said survey, and that this survey is correct to the best of my knowledge and belief. Corner restoration forms are on file for all monumented corners shown.

July 26, 2002
 Revised Dec. 27, 2002
 David E. Tlusty, S-1390
 Langlade County Surveyor

RECORD # 30533
 LANGLADE COUNTY SURVEYORS OFFICE
 DATE FILED 1/21/03 BY: D. TLUSTY



THIS DOCUMENT WAS CREATED ON LANGLADE COUNTY COMPUTER EQUIPMENT THAT WAS PURCHASED WITH THE ASSISTANCE OF A GRANT RECEIVED FROM THE WISCONSIN LAND INFORMATION BOARD.	
LANGLADE COUNTY LAND RECORDS & REGULATIONS DEPARTMENT	
SCALE:	1" = 500'
DRAWN BY:	D. TLUSTY
REF. FILE:	
DATE:	12/27/02
TOWN OF:	PECK
TOWN CODE:	
LOCATION:	
SECTION:	13
TOWNSHIP:	32
RANGE:	10
DWG. #:	..T32N/133210

NO.	DATE	DESCRIPTION	BY

REVISIONS