

RETRACEMENT SURVEY
of
H.C. HALL'S 1937 SURVEY
of the line common to
SECS. 4,5,6 of T. 34 N., R. 9 E.
and
SECS. 31,32,33 of T. 35 N., R. 9 E.
of the
FOURTH PRINCIPAL MERIDIAN
TOWNS OF PARRISH AND ENTERPRISE
COUNTIES OF LANGLADE AND ONEIDA
STATE OF WISCONSIN

The corner common to Townships 34 and 35 North, Ranges 8 and 9 East, Fourth Principal Meridian, Wisconsin was established by James M. Marsh, US Deputy Surveyor, in August of 1851.

The line common to Townships 34 and 35 North, Range 9 East, Fourth Principal Meridian, Wisconsin was surveyed by Hiram C. Fellows, US Deputy Surveyor, in July of 1859.

The line common to Townships 34 and 35 North, Range 9 East, Fourth Principal Meridian, Wisconsin was surveyed by T.H. Kilroe, capacity unknown, in May of 1936. Based on the field notes of this survey and the remaining evidence in the field, it appears the West three miles of this line was determined to be lost and re-established on a straight line between controlling corners.

The West three miles of the line common to Townships 34 and 35 North, Range 9 East, Fourth Principal Meridian, Wisconsin was surveyed by H.C. Hall, Land Surveyor, in December of 1937. Based on the field notes of this survey and the remaining evidence in the field, it appears Hall correctly re-established this line as a rumb (curved) line between controlling corners.

In December, 2003, Michael J. Romportl, Oneida County Surveyor and David E. Tlusty, Langlade County Surveyor, discussed the problem of existing double monuments marking section and quarter corners on the county line, between the Northwest corner of Section 6 and the Northeast corner of Section 4 in Township 34 North, Range 9 East. After a review of the records and the results of GPS survey occupations on all monuments, a mutual agreement was made that the monuments set in the late 1930's by H.C. Hall was an excellent effort on his part to re-establish lost corners by single proportionate methods, taking into account the amount of curvature of the township line in the original government survey.

This survey was executed by Jeffrey W. Austin, Registered Wisconsin Land Surveyor No. S-1885 for the Counties of Langlade and Oneida in January of 2004.

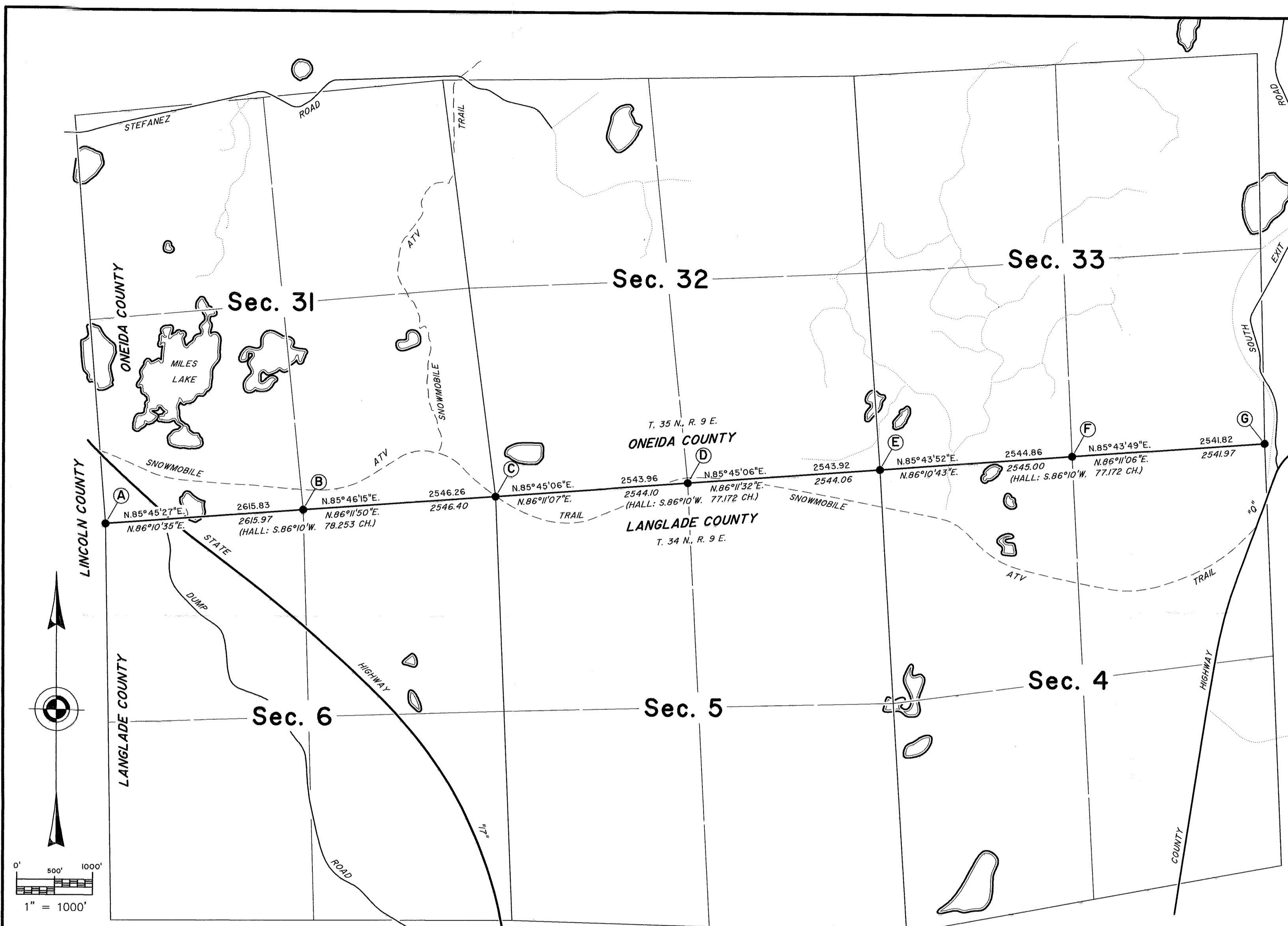
The azimuth was obtained from rapid-static global positioning system methods described below. Bearings and distances shown above the true line are grid and referenced to the Wisconsin State Plane Coordinate System, North Zone. Bearings shown below the true line are true mean bearings (geodetic) and refer to the true meridian. Distances shown below the true line are ground distances.

The corner positions of this survey were determined using rapid-static global positioning system methods controlled by the published values of the Oneida/Langlade County control stations 101S, 220S and 239S. A report of the control survey adjustment has been submitted to the Oneida County Surveyor. Coordinates and distances shown hereon are expressed in US Survey Feet and based on the NAD 83(91) datum unless otherwise noted.

Planimetric detail shown hereon is based on Oneida County digital orthophoto data and USGS quadrangle maps and should be considered approximate.

PT.	ONEIDA COUNTY		LANGLADE COUNTY	
	NORTH	EAST	NORTH	EAST
A	102521.805	260848.009	459766.760	550701.222
B	102700.336	263457.891	459928.743	553312.184
C	102873.518	265998.405	460085.813	555853.746
D	103047.389	268536.565	460243.584	558392.959
E	103221.257	271074.684	460401.349	560932.131
F	103396.104	273613.674	460560.086	563472.182
G	103570.778	276149.638	460718.665	566009.205

J.W. Austin Associates LLC
Consulting Land Surveyors - Minocqua, WI
10865 River Pine Road * P.O. Box 111 * Minocqua, WI 54548
(715)356-2559 * FAX (715)358-6199 * www.resurvey.org
CAD by: J.W. Austin



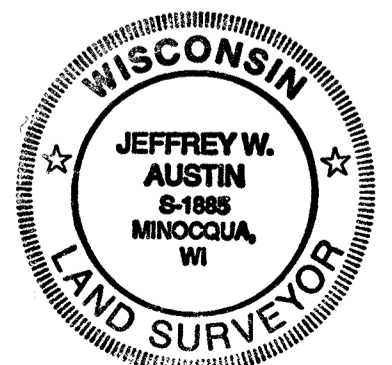
- (A)** Recovered an iron post, 2-1/2 ins. diam., flush with the bog, with brass cap mkd. as shown, from which
T35 R9 S36 S31 S1 S6 T34 R9
A yellow birch snag, 24 ins. diam., bears S.31°E., 34.65 ft. dist.
A cedar, 6 ins. diam., bears N.12°E., 75.05 ft. dist.
A white pine, 12 ins. diam., bears N.29°W., 57.03 ft. dist.
A cedar, 6 ins. diam., bears S.28°E., 32.45 ft. dist.
- (B)** Recovered an iron post, 2-1/2 ins. diam., projecting 22 ins. above the bog, with brass cap mkd. as shown, from which
T35 R9 S31 1/4 S6 T34 R9
A tamarack, 7 ins. diam., bears N.61°W., 6.00 ft. dist.
A tamarack, 7 ins. diam., bears N.19°W., 14.05 ft. dist.
A white pine, 15 ins. diam., bears S.81°E., 9.25 ft. dist.
A cedar, 9 ins. diam., bears S.20°W., 19.95 ft. dist.
A capped iron post, 4 ins. diam., bears N.7°E., 1.25 ft. dist.
- (C)** Recovered an iron post, 2-1/2 ins. diam., projecting 26 ins. above the ground, with brass cap mkd. as shown, from which
T35 R9 S31 S32 S6 S5 T34 R9
An oak, 14 ins. diam., bears S.83°E., 34.75 ft. dist.
An oak, 7 ins. diam., bears N.63°W., 1.85 ft. dist.
An oak, 11 ins. diam., bears N.10°E., 37.80 ft. dist.
A white pine, 27 ins. diam., bears S.50°W., 51.33 ft. dist.
A capped iron post, 4 ins. diam., bears N.20°E., 2.75 ft. dist.

- (D)** Recovered an iron post, 2-1/2 ins. diam., projecting 34 ins. above the ground, with brass cap mkd. as shown, from which
T35 R9 S32 1/4 S5 T34 R9
An oak, 20 ins. diam., bears N.28°E., 11.30 ft. dist.
A hemlock, 17 ins. diam., bears S.24°W., 31.92 ft. dist.
A yellow birch, 7 ins. diam., bears N.77°W., 5.45 ft. dist.
A basswood, 15 ins. diam., bears S.81°E., 32.35 ft. dist.
A capped iron post, 4 ins. diam., bears N.31°E., 3.20 ft. dist.
- (E)** Recovered an iron post, 2-1/2 ins. diam., projecting 30 ins. above the ground, with brass cap mkd. as shown, from which
T35 R9 S32 S33 S5 S4 T34 R9
A sugar maple, 11 ins. diam., bears N.39°E., 11.80 ft. dist.
A basswood, 11 ins. diam., bears N.42°W., 15.45 ft. dist.
A white birch, 13 ins. diam., bears N.76°W., 8.25 ft. dist.
A hemlock, 20 ins. diam., bears N.10°E., 39.60 ft. dist.
A capped iron post, 4 ins. diam., bears N.11°E., 2.70 ft. dist.
- (F)** Recovered an iron post, 2-1/2 ins. diam., projecting 28 ins. above the ground, with brass cap mkd. as shown, from which
T35 R9 S33 1/4 S4 T34 R9
An oak, 11 ins. diam., bears N.27°E., 21.81 ft. dist.
A maple, 20 ins. diam., bears N.79°W., 16.96 ft. dist.
A maple, 16 ins. diam., bears S.86°E., 14.13 ft. dist.
A maple, 14 ins. diam., bears N.17°W., 33.86 ft. dist.
A capped iron post, 4 ins. diam., bears N.19°W., 1.50 ft. dist.

- (G)** Recovered an iron post, 2-1/2 ins. diam., projecting 24 ins. above the ground, with brass cap mkd. as shown, from which
T35 R9 S33 S34 S4 S3 T34 R9
A grey boulder, 48 x 24 x 36 ins., bears N.55°E., 23.08 ft. dist.
A sugar maple, 8 ins. diam., bears S.39°W., 22.90 ft. dist.
A grey boulder, 48 x 24 x 24 ins., bears S.60°W., 2.60 ft. dist.
A black cherry stump, 8 ins. diam., bears N.5°W., 25.16 ft. dist.

I, Jeffrey W. Austin, Registered Land Surveyor No. S-1885, hereby certify upon honor that I have surveyed the line shown hereon; that this map represents an accurate survey of said line to the best of my knowledge and belief; that I have performed this survey by order of Michael J. Romportl and David E. Tlusty; and that I have complied with the requirements of Wisconsin Administrative Code A-E.

18 FEB 2004
Date Registered Land Surveyor



RECORD # 30542

LANGLADE COUNTY SURVEYORS OFFICE
DATE FILED: 2/15/04 BY: D. Tlusty