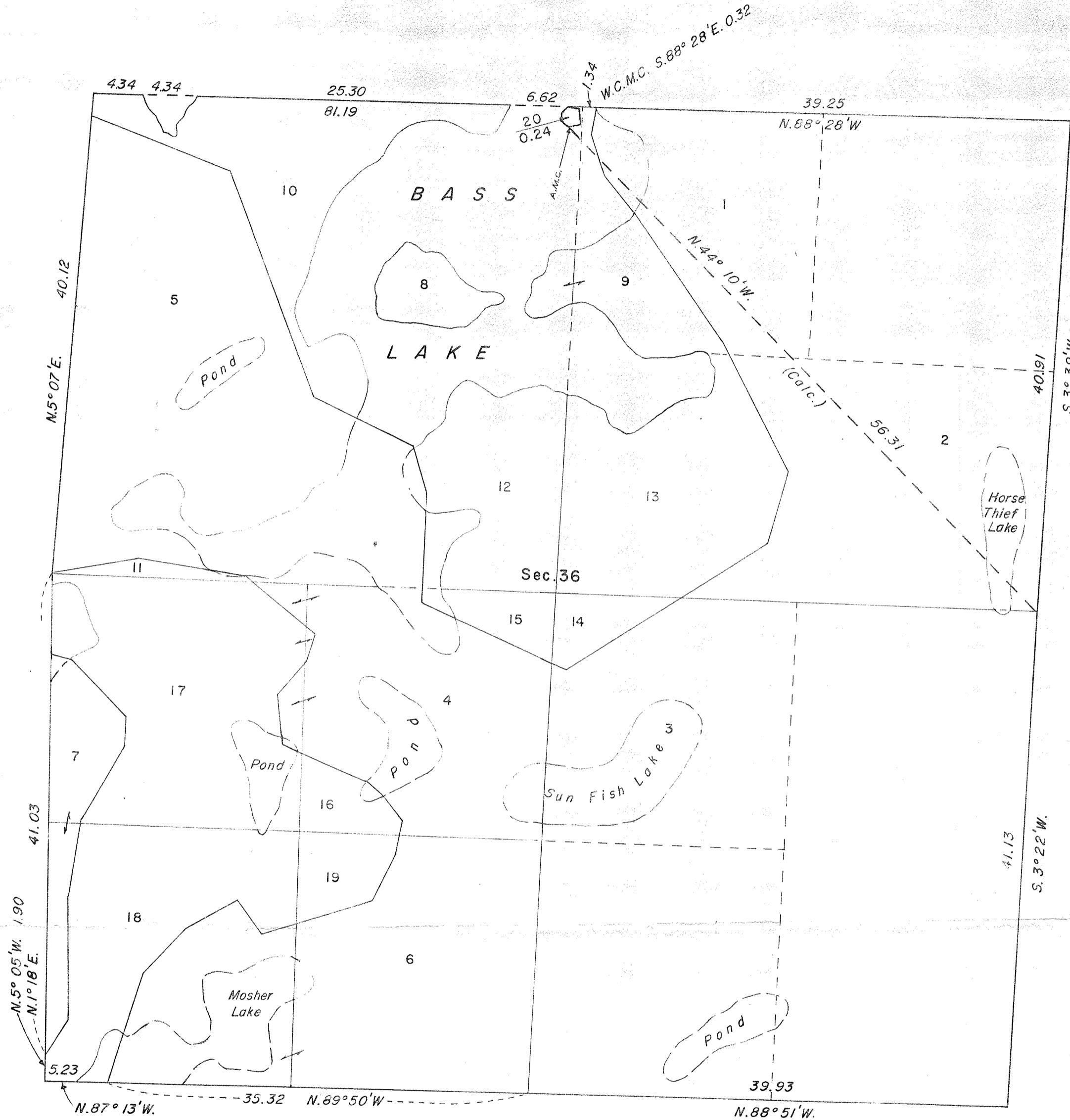


TOWNSHIP 33 NORTH, RANGE 10 EAST, OF THE FOURTH PRINCIPAL MERIDIAN, WISCONSIN SUPPLEMENTAL PLAT OF SECTION 36



Area surveyed: 0.24 Acres

This supplemental plat of section 36, giving area and designation to an island in Bass Lake not previously shown on an official plat, is based entirely on the record of an island survey in section 36 by C. M. Pidgeon, U. S. Surveyor, in 1911, and a dependent resurvey and extension survey in section 36 by A. W. Brown, U. S. Cadastral Engineer, in 1931.

In accordance with statements made in the field notes of C. M. Pidgeon, approved January 3, 1913, the island, now designated lot 20, section 36, T. 33 N., R. 10 E., Fourth Principal Meridian, Wisconsin, is classified as being over 50 percent upland in character within the interpretation of the Swamp and Overflow Act of September 28, 1850.

Except as indicated, the lottings and areas are as shown on the plats approved May 23, 1863, and January 3, 1913, and the plat accepted August 22, 1932.

UNITED STATES DEPARTMENT OF THE INTERIOR
BUREAU OF LAND MANAGEMENT
Washington, D. C. July 15, 1971

This supplemental plat is based upon the official records and, having been correctly prepared in accordance with the regulations, is hereby accepted.

For the Director

Clark I. Summ

Chief, Division of Cadastral Survey

RECORD # 30546
LANGLADE COUNTY SURVEYORS OFFICE
DATE FILED: 7/1/04 BY: D. TLUSTY