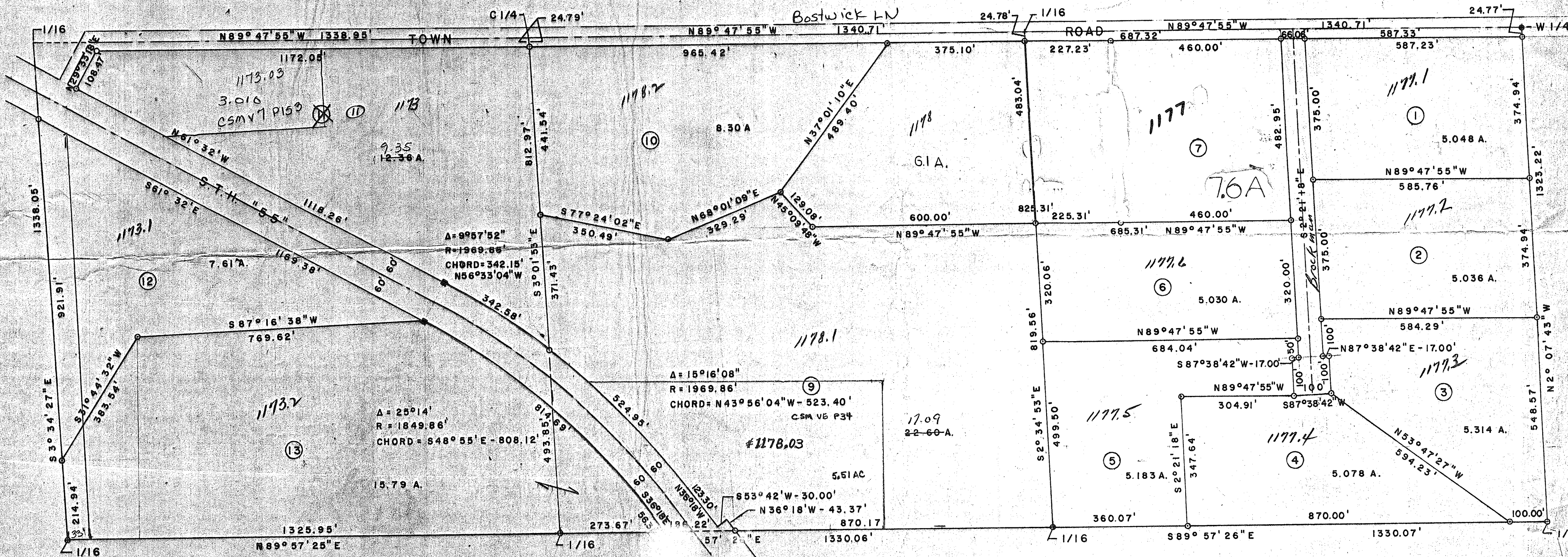


DETAIL A

3749' GTM
4020' 7.271'



NE1/4-SW1/4 NW1/4-SE1/4 NE1/4-SE1/4
 SEC. 35, T33N, R13E

NOTE: PARCELS NUMBERED FOR REF

RECORD # 30548
 LANGLADE COUNTY SURVEYORS OFFICE
 DATE FILED: 9/9/04 BY: D. TRUSTY