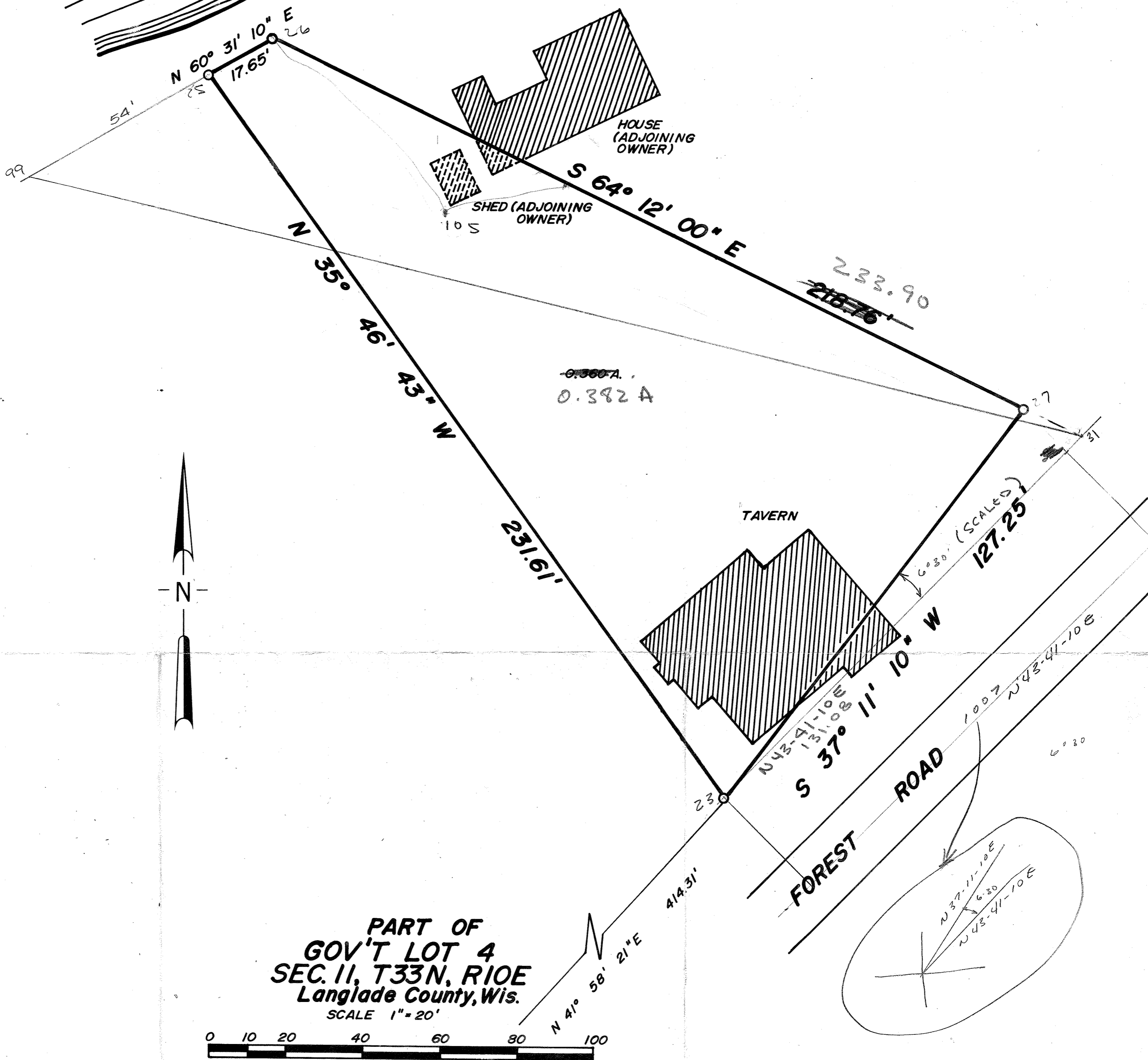


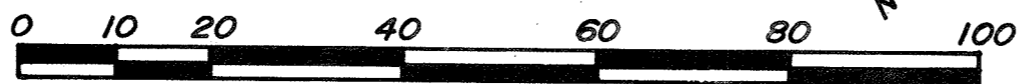
20.00  
17.65  
2.35

WATER POWER LAKE

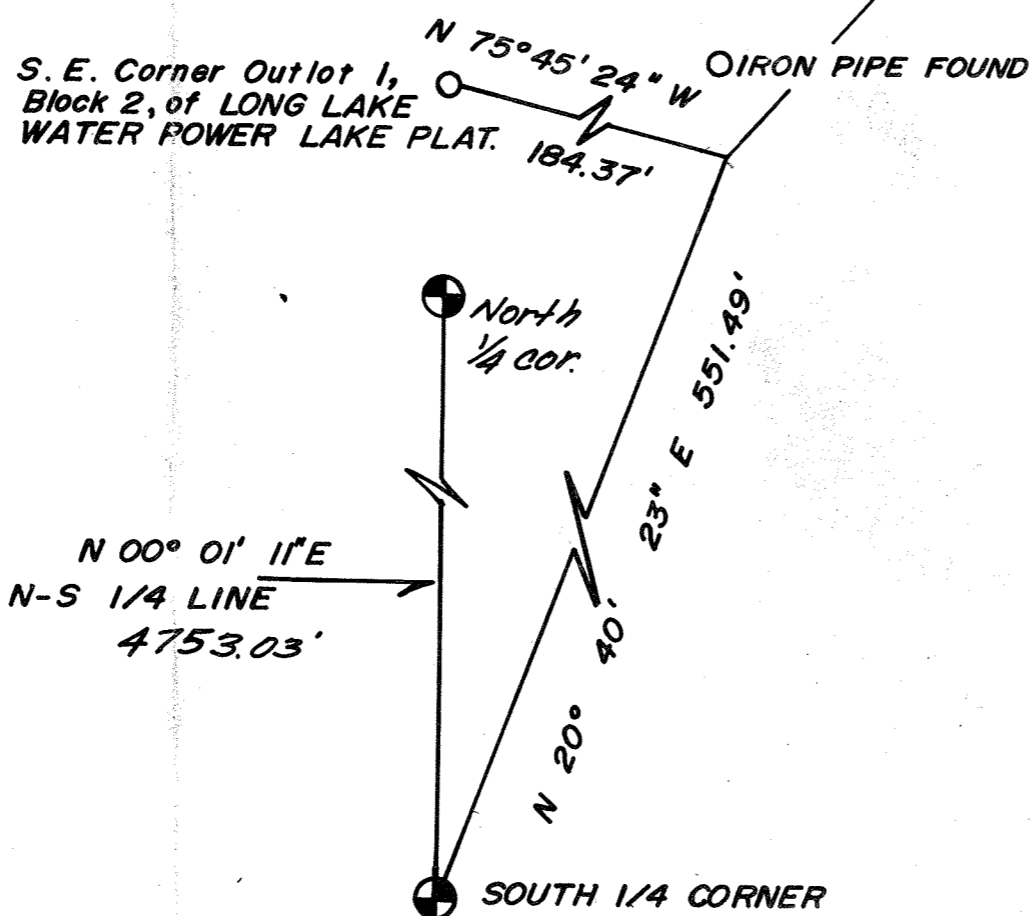


PART OF  
GOV'T LOT 4  
SEC. 11, T33N, R10E  
Langlade County, Wis.

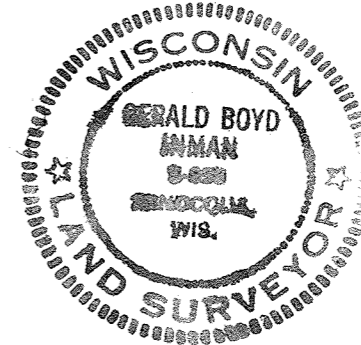
SCALE 1" = 20'



S. E. Corner Outlet 1,  
Block 2, of LONG LAKE  
WATER POWER LAKE PLAT. 184.37'

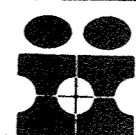


*Gerald Inman*  
SURVEYOR



RECORD # 30549  
LANGLADE COUNTY SURVEYORS OFFICE  
DATE FILED: 11/19/64 BY: D. J. TUSTY

SCALE 1" = 20'  
DRAWN BY: W. T.  
CHECKED BY: G. I.  
SHEET 1 OF 1  
DATE 6/4/73  
JOB NO. 1196



INMAN ENGINEERING  
OF WOODRUFF, INC.