

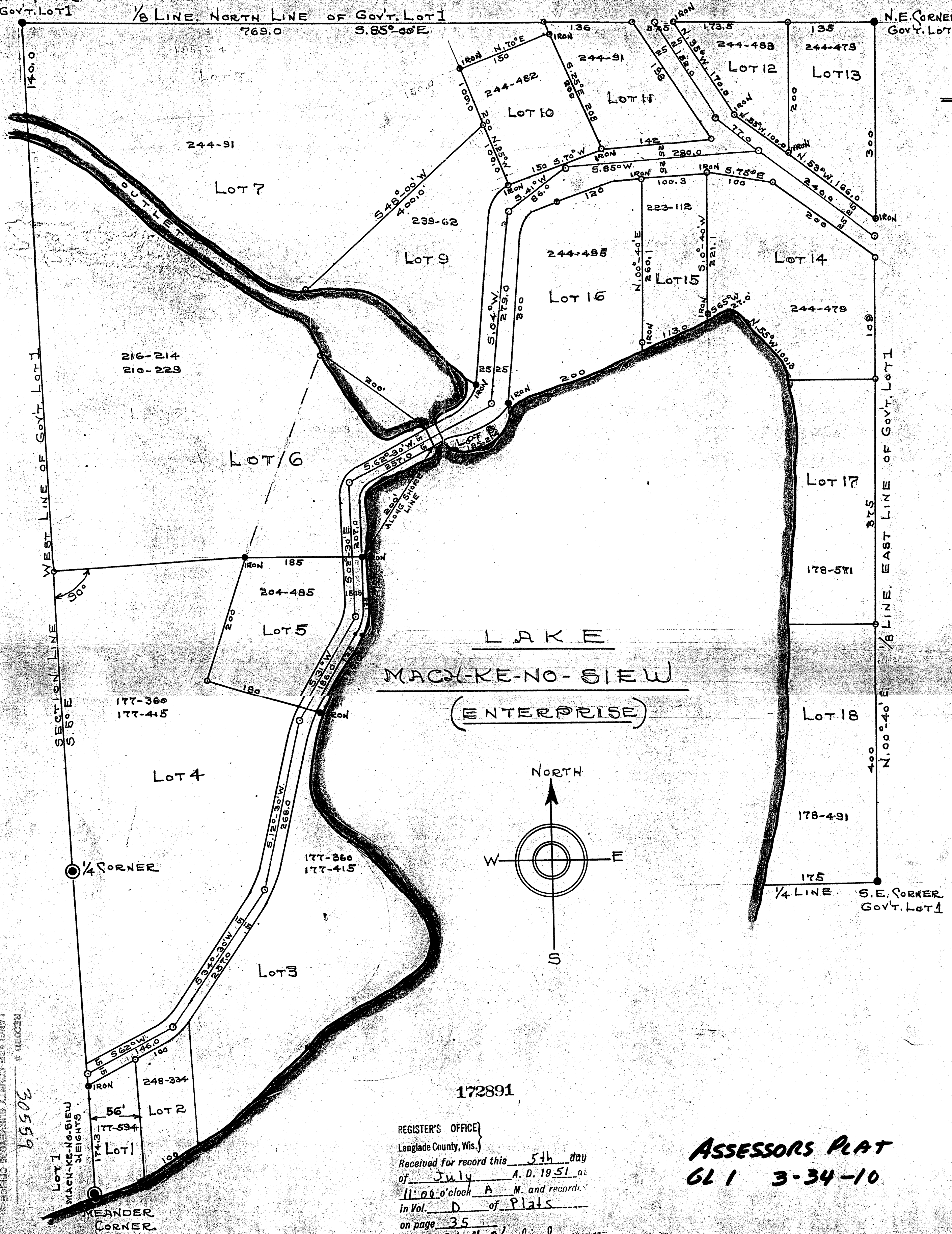
N.W. CORNER
Gov't. Lot 1

1/8 LINE, NORTH LINE OF GOV'T. LOT 1
769.0 5.85° 00' E.

N.E. CORNER
Gov't. Lot 1

GO
EL

3-34-10



1, 2, 3, 4, 5, 6, 7, 8, 9, 10, 11, 12, 13, 14, 15, 16, 17, 18, 19, 20, 21, 22, 23, 24, 25, 26, 27, 28, 29, 30, 31, 32, 33, 34, 35, 36, 37, 38, 39, 40, 41, 42, 43, 44, 45, 46, 47, 48, 49, 50, 51, 52, 53, 54, 55, 56, 57, 58, 59, 60, 61, 62, 63, 64, 65, 66, 67, 68, 69, 70, 71, 72, 73, 74, 75, 76, 77, 78, 79, 80, 81, 82, 83, 84, 85, 86, 87, 88, 89, 90, 91, 92, 93, 94, 95, 96, 97, 98, 99, 100

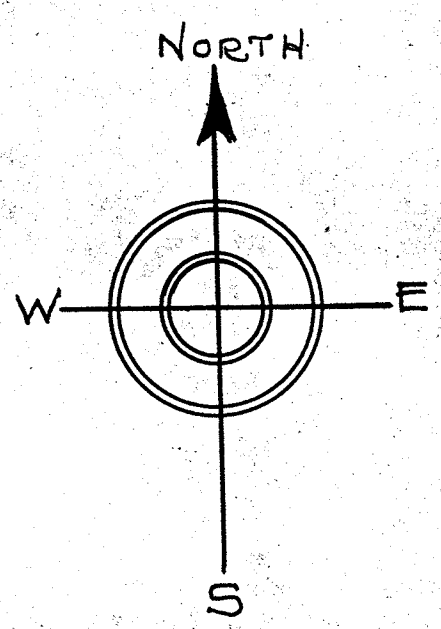
STAT
LANE
S.D.
WHO

RES
PLA

SECTION LINE
S. 5° E

1/4 CORNER

MEANDER CORNER



172891

REGISTER'S OFFICE
Langlade County, Wis.
Received for record this 5th day
of July A. D. 1951 at
11:00 o'clock A. M. and recorded
in Vol. D of Plats
on page 35
Al B. Kubiak
REGISTER OF DEEDS

ASSESSORS PLAT
61 3-34-10

RECORD # 30559
LANGLADE COUNTY SURVEYORS OFFICE
DATE FILED: 7/29/51 BY: [Signature]