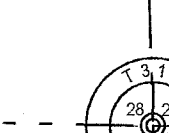
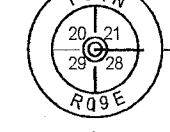
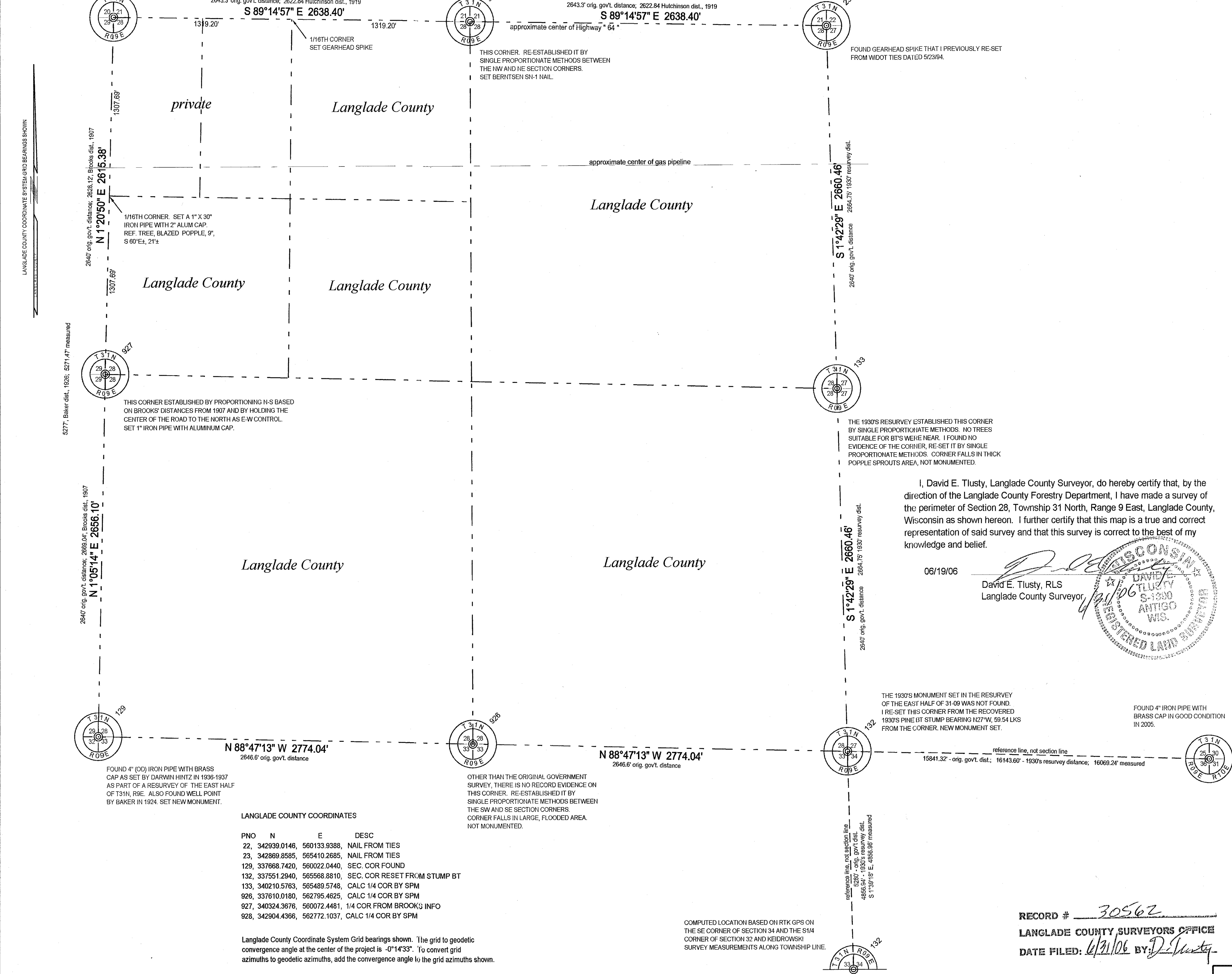


# Section 28, Township 31 North, Range 9 East

FOUND PK NAIL THAT I PREVIOUSLY RE-SET FROM WDOT TIES DATED 5/23/94.



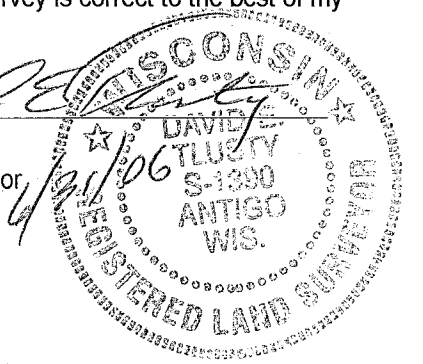
### LANGLADE COUNTY COORDINATES

PNO	N	E	DESC
22	342939.0146	560133.9388	NAIL FROM TIES
23	342869.8585	565410.2685	NAIL FROM TIES
129	337668.7420	560022.0440	SEC. COR FOUND
132	337551.2940	565568.8810	SEC. COR RESET FROM STUMP BT
133	340210.5763	565489.5748	CALC 1/4 COR BY SPM
926	337610.0180	562795.4625	CALC 1/4 COR BY SPM
927	340324.3676	560072.4481	1/4 COR FROM BROOK'S INFO
928	342904.4366	562772.1037	CALC 1/4 COR BY SPM

Langlade County Coordinate System Grid bearings shown. The grid to geodetic convergence angle at the center of the project is -0°14'33". To convert grid azimuths to geodetic azimuths, add the convergence angle to the grid azimuths shown.

I, David E. Tlusty, Langlade County Surveyor, do hereby certify that, by the direction of the Langlade County Forestry Department, I have made a survey of the perimeter of Section 28, Township 31 North, Range 9 East, Langlade County, Wisconsin as shown hereon. I further certify that this map is a true and correct representation of said survey and that this survey is correct to the best of my knowledge and belief.

06/19/06  
 David E. Tlusty, RLS  
 Langlade County Surveyor



THE 1930'S MONUMENT SET IN THE RESURVEY OF THE EAST HALF OF 31-09 WAS NOT FOUND. I RE-SET THIS CORNER FROM THE RECOVERED 1930'S PINE BT STUMP BEARING N27°W, 59.54 LKS FROM THE CORNER. NEW MONUMENT SET.

FOUND 4" IRON PIPE WITH BRASS CAP IN GOOD CONDITION IN 2005.

RECORD # 30562  
 LANGLADE COUNTY SURVEYORS OFFICE  
 DATE FILED: 6/21/06 BY: D. Tlusty

NO.		DATE	DESCRIPTION	BY
<p>THIS DOCUMENT WAS CREATED ON LANGLADE COUNTY COMPUTER EQUIPMENT THAT WAS PURCHASED WITH THE ASSISTANCE OF A GRANT RECEIVED FROM THE WISCONSIN LAND INFORMATION BOARD.</p> <p><b>LANGLADE COUNTY</b>                      LAND RECORDS &amp; REGULATIONS DEPARTMENT</p>				
SCALE: 1" = 500'				
DRAWN BY: D. TLUSTY				
REF. FILE:				
DATE: 06/19/06				
TOWN OF: ACKLEY				
TOWN CODE: 002				
LOCATION:				
SECTION: 28				
TOWNSHIP: 31				
RANGE: 9				
DWG. #: ..T31N/283109				