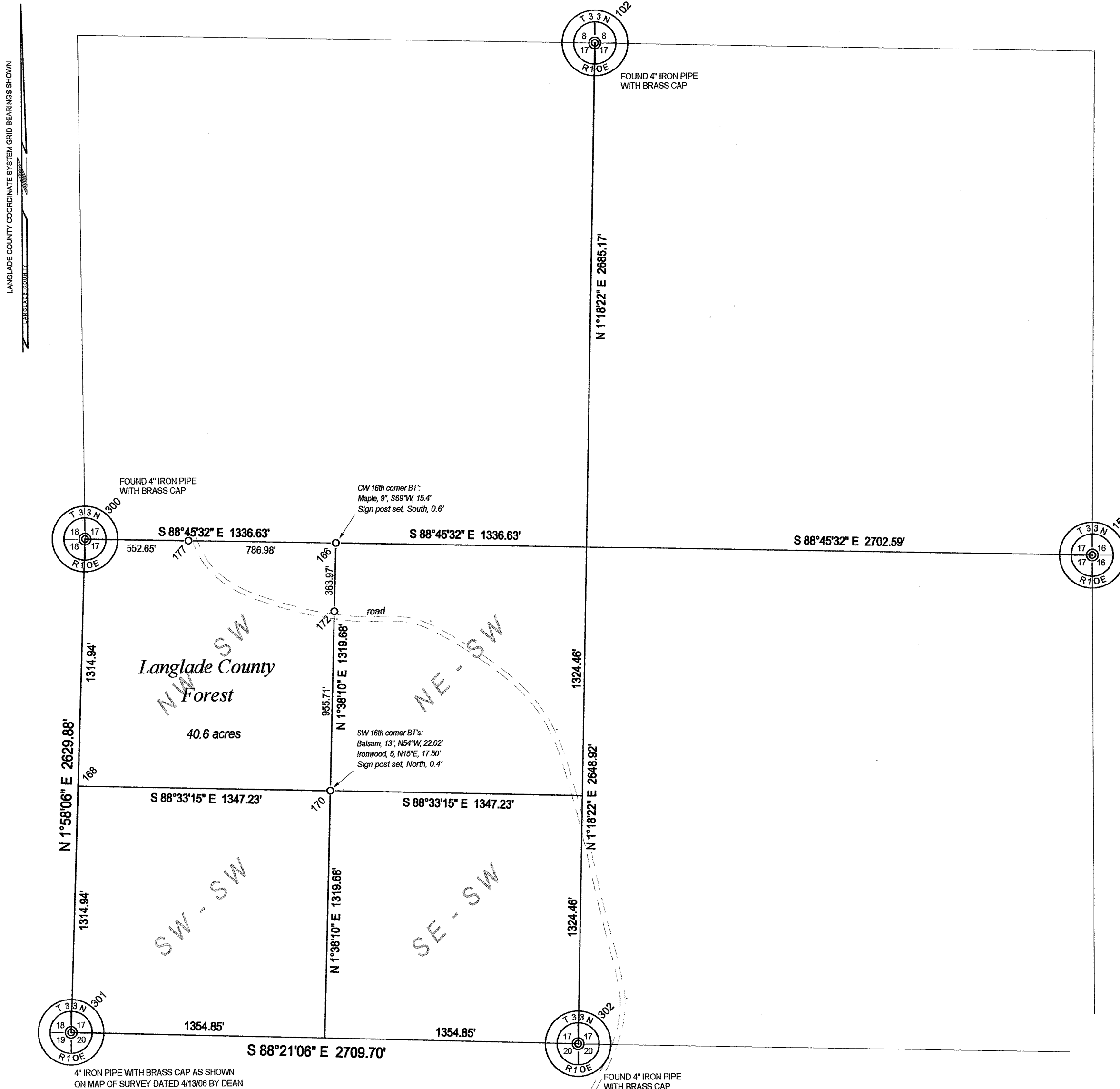


Section 17, Township 33 North, Range 10 East



4" IRON PIPE WITH BRASS CAP AS SHOWN ON MAP OF SURVEY DATED 4/13/06 BY DEAN WILLIAMS. FOR THIS SURVEY I DID NOT MEASURE TO THIS CORNER. I MEASURED TO THE W1/4 COR. AND THE SOUTH 1/4 COR. AND THE COMPUTED DIST. BETWEEN THOSE CORNERS MATCHED WILLIAMS BY 0.13' SO HELD HIS MAP DISTANCES TO COMPUTE THE LOCATION FOR THIS CORNER.

SURVEY COMMENTS

The coordinate values of the four quarter corners shown have been obtained by a field angle traverse with a total station, starting at RTK GPS control points near each corner. The coordinate value for the SW corner of Section 17 was determined as described on the map.

Coordinates shown are Langlade County Coordinates. Bearings shown are Langlade County Coordinate System grid bearings. Bearing trees have a "Bearing Tree" sign facing the corner and have been measured to an aluminum nail is a side blaze on the right side of the tree.

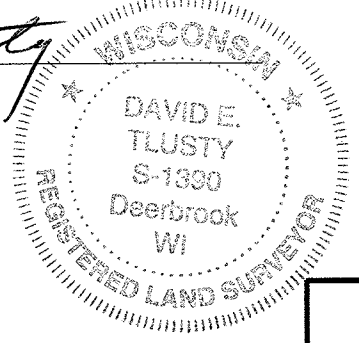
PNO	N	E	Description
102	416957.467	589762.120	N 1/4 cor, 4" IP w/brass cap found
154	414214.453	592402.870	E 1/4 cor, 4" IP w/brass cap found
166	414302.007	588361.593	CW16TH cor, 1" x 30" IP set
168	413016.864	586977.112	S16TH cor, not monumented
170	412982.870	588323.916	SW 16TH cor, 1" x 30" IP set
172	413938.194	588351.232	3/4" x 30" rebar set
177	414319.053	587574.792	1" x 30" IP set
300	414331.023	587022.275	W 1/4 cor, 4" IP w/brass cap found
301	411702.705	586931.949	SW cor.
302	411624.761	589640.528	S 1/4 cor, 4" IP w/brass cap found

A green, steel channel sign post with a "Langlade County Forest" sign has been set within 0.5' of each pipe or rebar set.

I, David E. Tlusty, Langlade County Surveyor, do hereby certify that by the direction of Steve Jackson, Langlade County Forest Administrator, I have made a survey of part of Section 17, T.33 N., R.10 E., Town of Upham, as shown hereon. I further certify that this map is a true and correct representation of said survey, and that this survey is correct to the best of my knowledge and belief. Corner restoration forms are on file for all monumented corners shown.

Dec 6, 2006

David E. Tlusty, S-1390
Langlade County Surveyor



RECORD # 30564
LANGLADE COUNTY SURVEYORS OFFICE
DATE FILED: 12/6/06 BY: [Signature]

THIS DOCUMENT WAS CREATED ON LANGLADE COUNTY COMPUTER EQUIPMENT THAT WAS PURCHASED WITH THE ASSISTANCE OF A GRANT RECEIVED FROM THE WISCONSIN LAND INFORMATION BOARD.

LANGLADE COUNTY
LAND RECORDS & REGULATIONS DEPARTMENT

SCALE:
1" = 500'

DRAWN BY:
D. TLUSTY

REF. FILE:

DATE:
12/06/2006

TOWN OF:
UPHAM

TOWN CODE:

LOCATION:

SECTION: 17

TOWNSHIP: 33

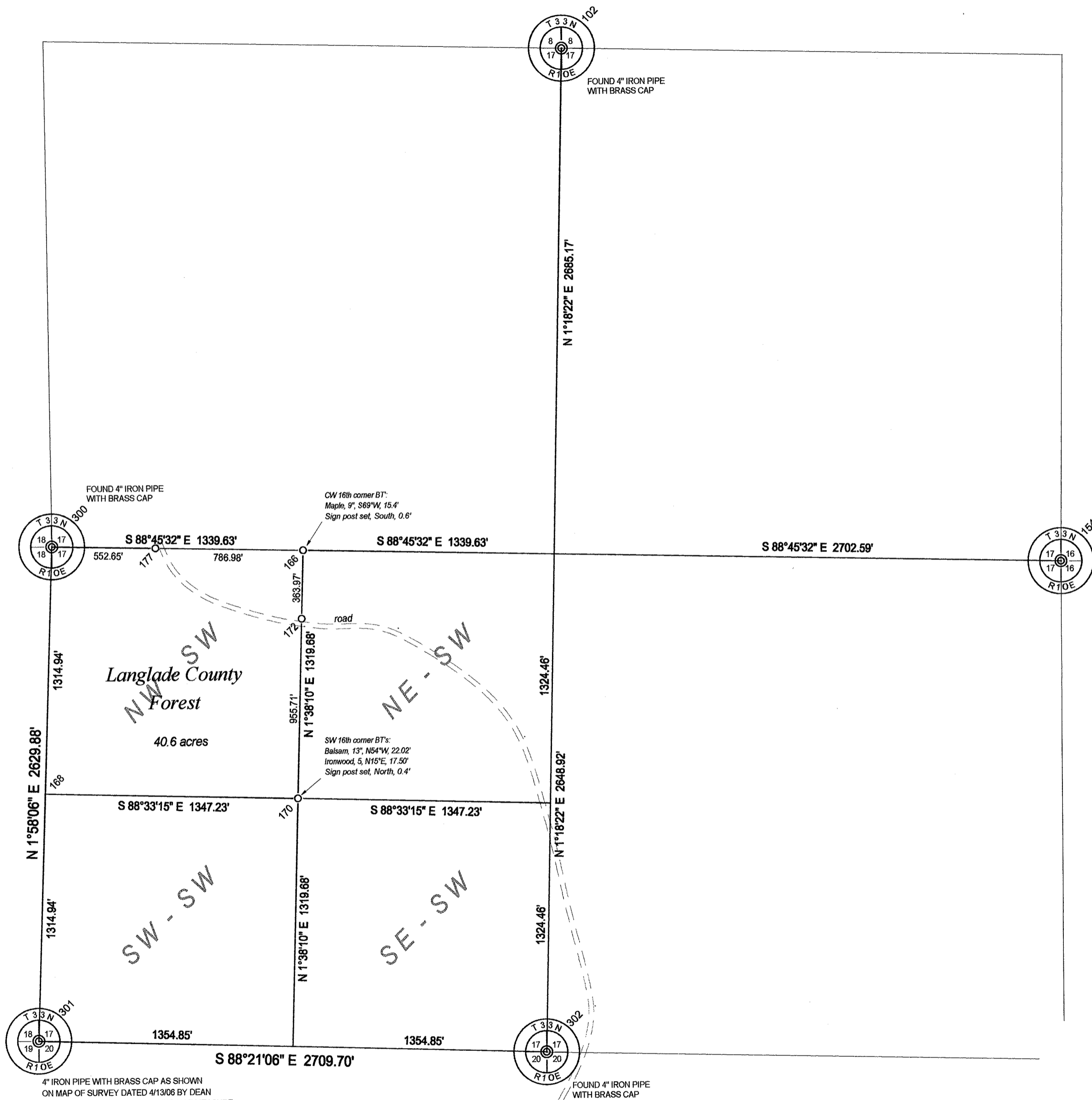
RANGE: 10

DWG. #:
..173310

NO.	DATE	DESCRIPTION	BY	REVISIONS

Section 17, Township 33 North, Range 10 East

LANGLADE COUNTY COORDINATE SYSTEM GRID BEARINGS SHOWN



4" IRON PIPE WITH BRASS CAP AS SHOWN ON MAP OF SURVEY DATED 4/13/06 BY DEAN WILLIAMS. FOR THIS SURVEY I DID NOT MEASURE TO THIS CORNER. I MEASURED TO THE W1/4 COR. AND THE SOUTH 1/4 COR. AND THE COMPUTED DIST. BETWEEN THOSE CORNERS MATCHED WILLIAMS BY 0.13' SO HELD HIS MAP DISTANCES TO COMPUTE THE LOCATION FOR THIS CORNER.

SURVEY COMMENTS

The coordinate values of the four quarter corners shown have been obtained by a field angle traverse with a total station, starting at RTK GPS control points near each corner. The coordinate value for the SW corner of Section 17 was determined as described on the map.

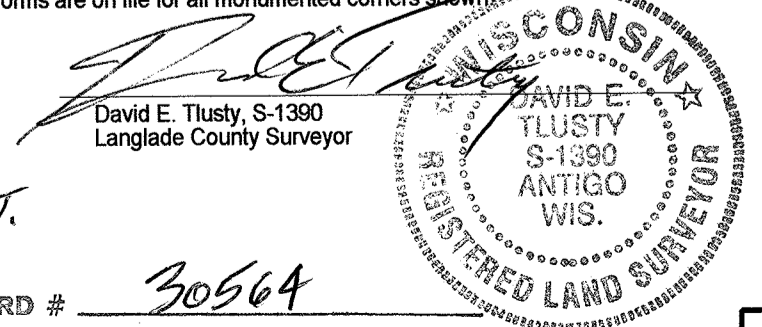
Coordinates shown are Langlade County Coordinates.
Bearings shown are Langlade County Coordinate System grid bearings.
Bearing trees have a "Bearing Tree" sign facing the corner and have been measured to an aluminum nail in a side blaze on the right side of the tree.

PNO	N	E	Description
102	416957.467	589762.120	N 1/4 cor, 4" IP w/brass cap found
154	414214.453	592402.870	E 1/4 cor, 4" IP w/brass cap found
166	414302.007	588361.593	CW16TH cor, 1" x 30" IP set
168	413016.864	586977.112	S16TH cor, not monumented
170	412982.870	588323.916	SW 16TH cor, 1" x 30" IP set
172	413938.194	588351.232	3/4" x 30" rebar set
177	414319.053	587574.792	1" x 30" IP set
300	414331.023	587022.275	W 1/4 cor, 4" IP w/brass cap found
301	411702.705	586931.949	SW cor.
302	411624.761	589640.528	S 1/4 cor, 4" IP w/brass cap found

A green, steel channel sign post with a "Langlade County Forest" sign has been set within 0.5' of each pipe or rebar set.

I, David E. Tlusty, Langlade County Surveyor, do hereby certify that by the direction of Steve Jackson, Langlade County Forest Administrator, I have made a survey of part of Section 17, T.33 N., R.10 E., Town of Upham, as shown hereon. I further certify that this map is a true and correct representation of said survey, and that this survey is correct to the best of my knowledge and belief. Corner restoration forms are on file for all monumented corners shown.

Dec 6, 2006



revised 10/02/07
D.T.

RECORD # 30564
LANGLADE COUNTY SURVEYORS OFFICE
DATE FILED: 10/2/07 BY: D. Tlusty

THIS DOCUMENT WAS CREATED ON LANGLADE COUNTY COMPUTER EQUIPMENT THAT WAS PURCHASED WITH THE ASSISTANCE OF A GRANT RECEIVED FROM THE WISCONSIN LAND INFORMATION BOARD.

LANGLADE COUNTY
LAND RECORDS & REGULATIONS DEPARTMENT

SCALE:	1" = 500'
DRAWN BY:	D. TLUSTY
REF. FILE:	
DATE:	12/06/2006
TOWN OF:	UPHAM
TOWN CODE:	
LOCATION:	
SECTION:	17
TOWNSHIP:	33
RANGE:	10
DWG. #:	..173310

NO.	DATE	DESCRIPTION	BY
1	10/02/07	Corrected 2 dists from 1336.63' to 1339.63'	

REVISIONS