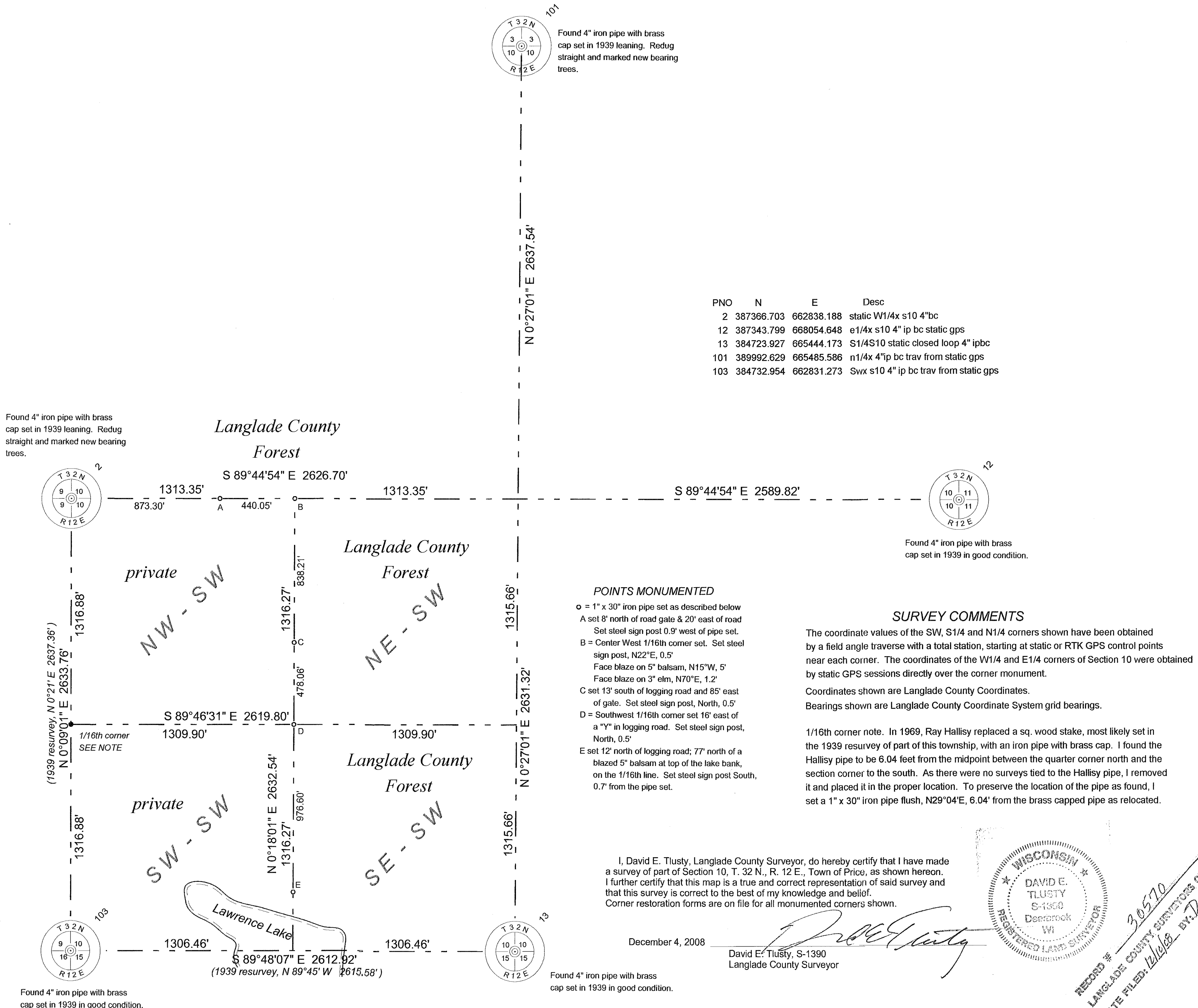


# Section 10, Township 32 North, Range 12 East

LANGLADE COUNTY COORDINATE SYSTEM GRID BEARINGS SHOWN



Found 4" iron pipe with brass cap set in 1939 leaning. Redug straight and marked new bearing trees.

Found 4" iron pipe with brass cap set in 1939 leaning. Redug straight and marked new bearing trees.

Found 4" iron pipe with brass cap set in 1939 in good condition.

**POINTS MONUMENTED**  
 o = 1" x 30" iron pipe set as described below  
 A set 8' north of road gate & 20' east of road. Set steel sign post 0.9' west of pipe set.  
 B = Center West 1/16th corner set. Set steel sign post, N22°E, 0.5'. Face blaze on 5" balsam, N15°W, 5'. Face blaze on 3" elm, N70°E, 1.2'.  
 C set 13' south of logging road and 85' east of gate. Set steel sign post, North, 0.5'.  
 D = Southwest 1/16th corner set 16' east of a "y" in logging road. Set steel sign post, North, 0.5'.  
 E set 12' north of logging road; 77' north of a blazed 5" balsam at top of the lake bank, on the 1/16th line. Set steel sign post South, 0.7' from the pipe set.

**SURVEY COMMENTS**

The coordinate values of the SW, S1/4 and N1/4 corners shown have been obtained by a field angle traverse with a total station, starting at static or RTK GPS control points near each corner. The coordinates of the W1/4 and E1/4 corners of Section 10 were obtained by static GPS sessions directly over the corner monument.

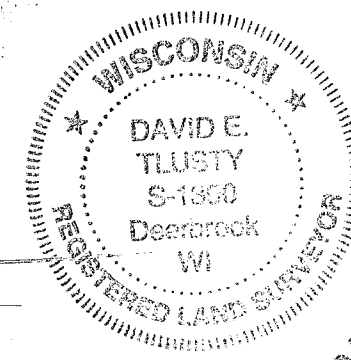
Coordinates shown are Langlade County Coordinates.  
 Bearings shown are Langlade County Coordinate System grid bearings.

1/16th corner note. In 1969, Ray Hallisy replaced a sq. wood stake, most likely set in the 1939 resurvey of part of this township, with an iron pipe with brass cap. I found the Hallisy pipe to be 6.04 feet from the midpoint between the quarter corner north and the section corner to the south. As there were no surveys tied to the Hallisy pipe, I removed it and placed it in the proper location. To preserve the location of the pipe as found, I set a 1" x 30" iron pipe flush, N29°04'E, 6.04' from the brass capped pipe as relocated.

I, David E. Tlusty, Langlade County Surveyor, do hereby certify that I have made a survey of part of Section 10, T. 32 N., R. 12 E., Town of Price, as shown hereon. I further certify that this map is a true and correct representation of said survey and that this survey is correct to the best of my knowledge and belief. Corner restoration forms are on file for all monumented corners shown.

December 4, 2008

David E. Tlusty, S-1390  
 Langlade County Surveyor



RECORD # 30570  
 LANGLADE COUNTY SURVEYORS OFFICE  
 DATE FILED: 12/16/08 BY: D. Tlusty

PNO	N	E	Desc
2	387366.703	662838.188	static W1/4x s10 4"bc
12	387343.799	668054.648	e1/4x s10 4" ip bc static gps
13	384723.927	665444.173	S1/4S10 static closed loop 4" ipbc
101	389992.629	665485.586	n1/4x 4"ip bc trav from static gps
103	384732.954	662831.273	Swx s10 4" ip bc trav from static gps

NO.	DATE	DESCRIPTION	REVISIONS

THIS DOCUMENT WAS CREATED ON LANGLADE COUNTY COMPUTER EQUIPMENT THAT WAS PURCHASED WITH THE ASSISTANCE OF A GRANT RECEIVED FROM THE WISCONSIN LAND INFORMATION BOARD.

## LANGLADE COUNTY

LAND RECORDS & REGULATIONS DEPARTMENT

SCALE: 1" = 400'

DRAWN BY: D. TLUSTY

REF. FILE: FB 21

DATE: 11/24/08

TOWN OF: PRICE

TOWN CODE: cogo file: 103212

LOCATION:

SECTION: 10

TOWNSHIP: 32

RANGE: 12

DWG. #: ..SURVEYS/T32N/103212