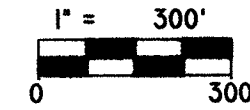


# PLAT OF SURVEY

OF THE SOUTHEAST 1/4 OF THE NORTHWEST 1/4  
OF  
SECTION 4, TOWNSHIP 32 NORTH, RANGE 10 EAST  
IN THE  
TOWN OF PECK  
LANGLADE COUNTY, WISCONSIN

NORTH



LEGEND	
○	1-IN. I.D. x 18" IRON PIPE WEIGHING 1.68 LBS/LIN. FT. SET
●	FOUND 1-IN. I.D. IRON PIPE
1320.00'	MEASURED DISTANCE, THIS SURVEY
(1320')	ORIGINAL GOV'T. SURVEY DISTANCE

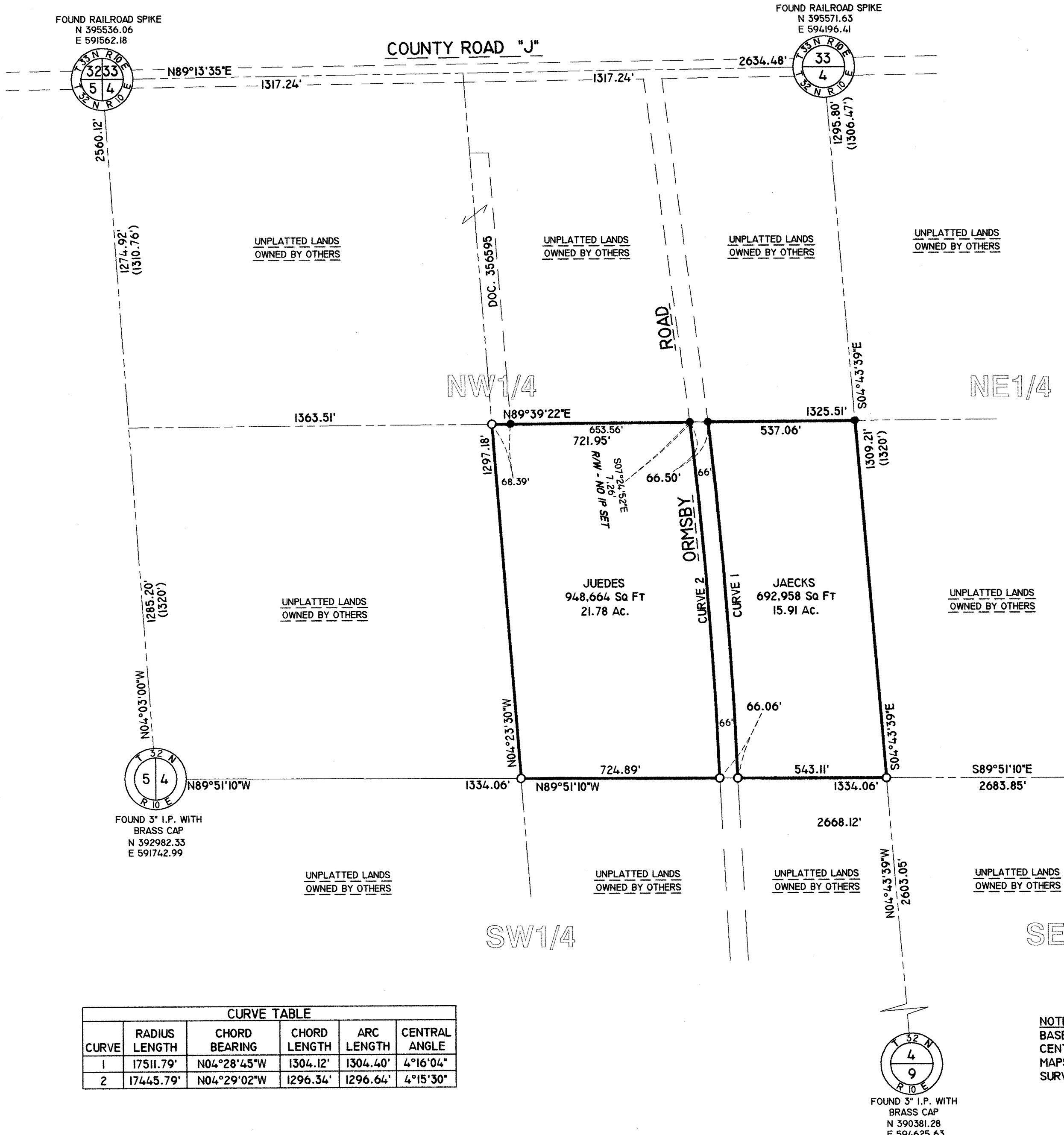
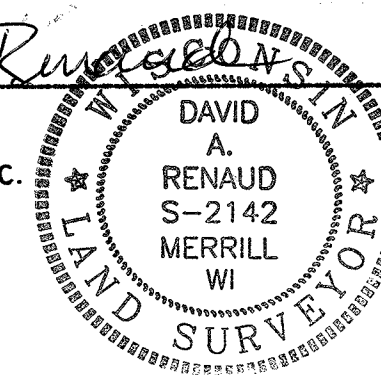
BEARINGS AND COORDINATES ARE BASED ON THE LANGLADE COUNTY COORDINATE SYSTEM, NAD 1983 (91) DATUM, AND ARE REFERENCED TO THE NORTH LINE OF THE NORTHWEST 1/4 OF SEC. 4, T32N, R10E, MEASURED TO BEAR N89°13'48"E. COORDINATES AT THE SOUTH 1/4 CORNER OF SEC. 4, T32N, R10E, OF N.390381.2794/E.594625.6325 WERE PROVIDED BY THE LANGLADE COUNTY SURVEYOR'S OFFICE AND HELD AS A COORDINATE BASE POINT FOR THIS SURVEY.

**SURVEYOR'S CERTIFICATE**

I, DAVID A. RENAUD, DO HEREBY CERTIFY THAT AT THE DIRECTION OF MICHAEL JAECKS AND ROGER JUEDES, AND IN FULL COMPLIANCE WITH WISCONSIN ADMINISTRATIVE CODE A-E7, I HAVE SURVEYED AND MAPPED THE PARCEL OF LAND DESCRIBED HEREON, AND THAT SAID SURVEY AND MAP THEREOF ARE CORRECT AND ACCURATE TO THE BEST OF MY KNOWLEDGE AND BELIEF.

DATED THIS 3RD DAY OF December, 2007

*David A. Renaud*  
DAVID A. RENAUD  
WI RLS S-2142  
REI ENGINEERING, INC.



UNPLATTED LANDS OWNED BY OTHERS

UNPLATTED LANDS OWNED BY OTHERS

UNPLATTED LANDS OWNED BY OTHERS

UNPLATTED LANDS OWNED BY OTHERS

UNPLATTED LANDS OWNED BY OTHERS

UNPLATTED LANDS OWNED BY OTHERS

UNPLATTED LANDS OWNED BY OTHERS

UNPLATTED LANDS OWNED BY OTHERS

UNPLATTED LANDS OWNED BY OTHERS

UNPLATTED LANDS OWNED BY OTHERS

CURVE TABLE					
CURVE	RADIUS LENGTH	CHORD BEARING	CHORD LENGTH	ARC LENGTH	CENTRAL ANGLE
1	17511.79'	N04°28'45"W	1304.12'	1304.40'	4°16'04"
2	17445.79'	N04°29'02"W	1296.34'	1296.64'	4°15'30"

SE1/4  
RECORD # 30574  
LANGLADE COUNTY SURVEYORS OFFICE  
DATE FILED: 2/2/09 BY: DRUSTY

NOTE: THE RIGHT-OF-WAY OF ORMSBY RD. IS BASED ON THE EXISTING TRAVELED CENTERLINE OF THE IMPROVED ROADWAY, AND MAPS ON FILE IN THE LANGLADE CO. SURVEYOR'S OFFICE.

## REI

**CIVIL & ENVIRONMENTAL  
ENGINEERING, SURVEYING**

**4080 N. 20th AVENUE  
WAUSAU, WISCONSIN 54401**

**PHONE: (715) 675-9784 FAX: (715) 675-4060**

**EMAIL: mail@REIengineering.com**

DESIGNED BY:	CHECKED BY: DAR
SURVEYED BY: JP/WK	APPROVED BY: DAR
DRAWN BY: MFL	DATE: 11/12/07
SHEET	PROJECT No.
1 OF 1	4711

DRAWING FILE: J:\DRAFTING\4711\JAECKS\DWG\4711 PLAT DRAWING.DWG LAYOUT: MODEL  
PLOTTED: DEC 03, 2007 - 2:10PM PLOTTED BY: DAVER