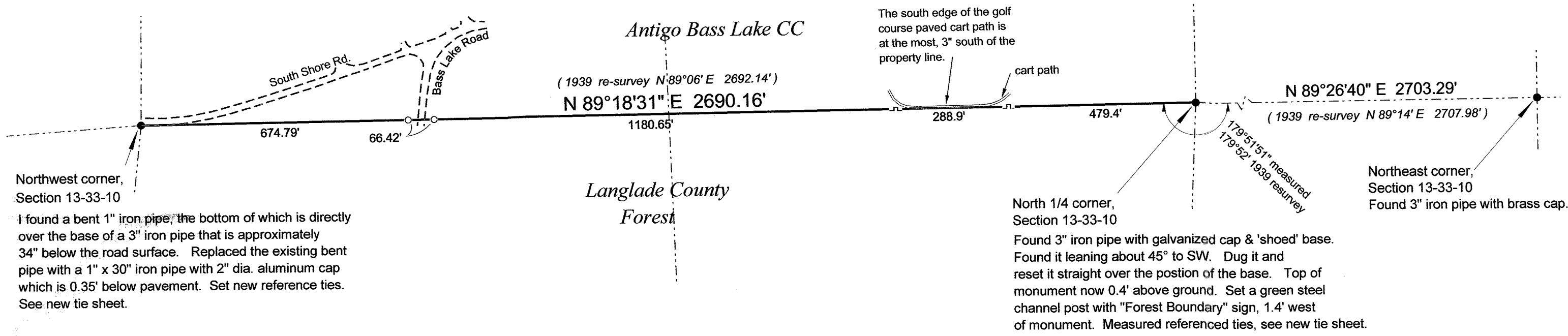


The North line of Section 13, Township 33 North, Range 10 East

LANGLADE COUNTY COORDINATE SYSTEM GRID BEARINGS SHOWN



Northwest corner, Section 13-33-10

I found a bent 1" iron pipe, the bottom of which is directly over the base of a 3" iron pipe that is approximately 34" below the road surface. Replaced the existing bent pipe with a 1" x 30" iron pipe with 2" dia. aluminum cap which is 0.35' below pavement. Set new reference ties. See new tie sheet.

North 1/4 corner, Section 13-33-10

Found 3" iron pipe with galvanized cap & 'shoed' base. Found it leaning about 45° to SW. Dug it and reset it straight over the position of the base. Top of monument now 0.4' above ground. Set a green steel channel post with "Forest Boundary" sign, 1.4' west of monument. Measured referenced ties, see new tie sheet.

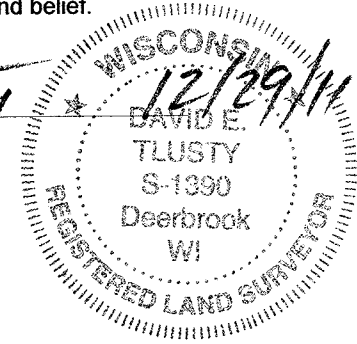
Antigo Bass Lake CC
Langlade County Forest

I, David E. Tlusty, Langlade County Surveyor, do hereby certify that, by the direction of Steve Jackson, Langlade County Forest Administrator, I have marked the North line of Langlade County Forest Land, being the North line of the Northwest Quarter of Section 13, T. 33 N., R. 10 E.

I further certify that this map is a true and correct representation of said survey and that this survey is correct to the best of my knowledge and belief.

December 21, 2011

David E. Tlusty, S-1390
Langlade County Surveyor



SURVEY COMMENTS

The coordinates for the NW corner and the N1/4 corner were obtained by conventional traverse work from two static GPS control points in the golf course. The coordinates for the NE corner were obtained by conventional traverse work from two RTK control points in the highway, very near the corner.

Coordinates shown are Langlade County Grid coordinates based on published NAD83(91) values on County control network points.

	N	E	
N1/4 cor, Sec 13	417354.09	611769.58	mon fnd and reset.
NW cor, Sec 13	417321.64	609079.61	1" ip fnd and reset
NE cor, Sec 13	417380.31	614472.74	mon fnd

- 3/4" X 30" rebar set
- Green, steel channel sign post with a "Langlade County Forest" sign set.

Langlade County Coordinate system grid bearings shown.

RECORD # 30588
LANGLADE COUNTY SURVEYORS OFFICE
DATE FILED: 12/29/11 BY: D. TLUSTY

THIS DOCUMENT WAS CREATED ON LANGLADE COUNTY COMPUTER EQUIPMENT THAT WAS PURCHASED WITH THE ASSISTANCE OF A GRANT RECEIVED FROM THE WISCONSIN LAND INFORMATION BOARD.

LANGLADE COUNTY
LAND RECORDS & REGULATIONS DEPARTMENT

SCALE:
1" = 250'

DRAWN BY:
D. TLUSTY

REF. FILE:

DATE:
Dec 2011

UPHAM

TOWN CODE:
FB 22-84

LOCATION:
TOWN OF UPHAM

SECTION: 13
TOWNSHIP: 33
RANGE: 10

DWG. #:
...123310

NO.	DATE	DESCRIPTION	BY