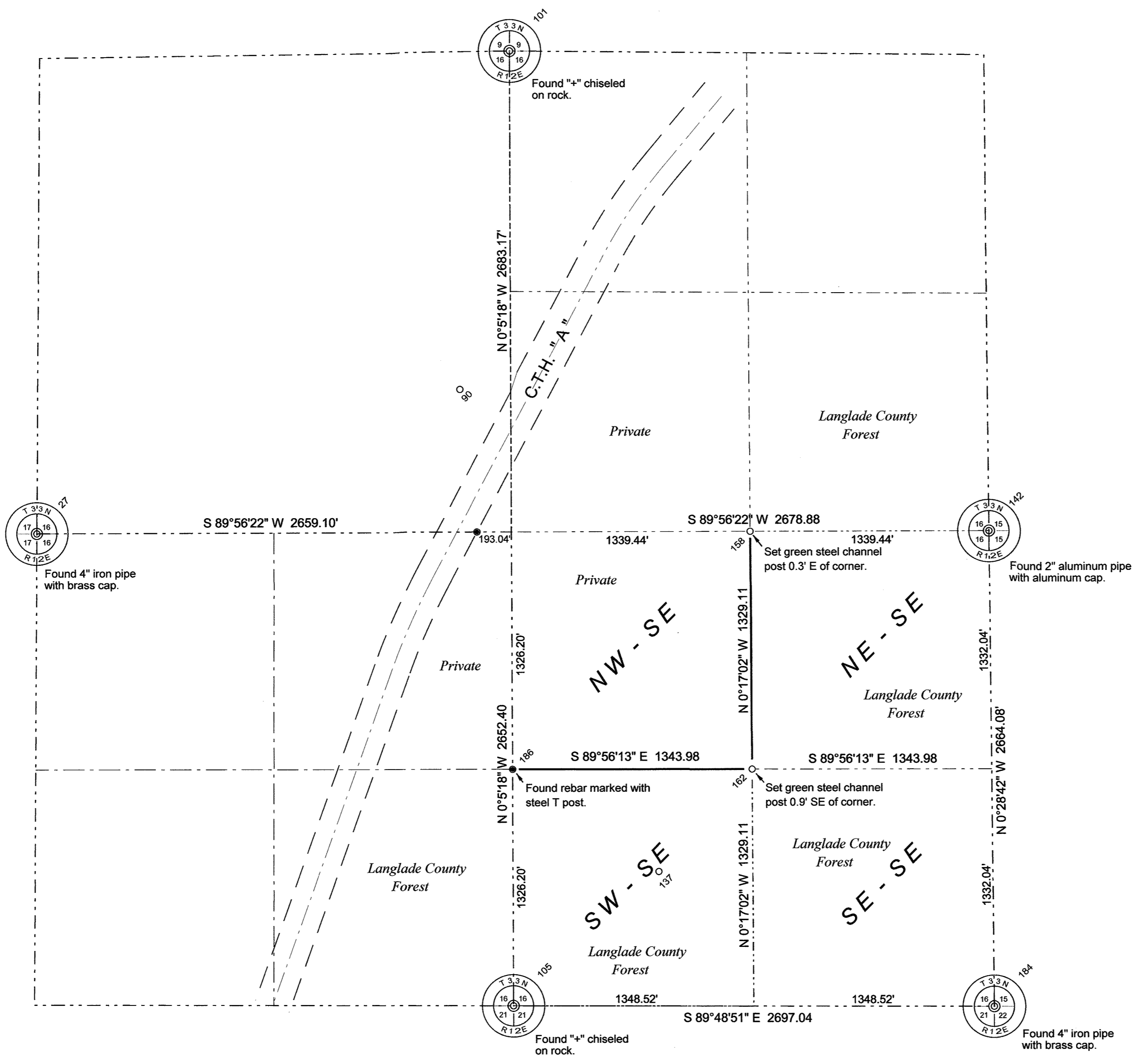


Section 16, Township 33 North, Range 12 East

LANGLADE COUNTY COORDINATE SYSTEM GRID BEARINGS SHOWN



SURVEY COMMENTS

The coordinate values of the S1/4, N1/4 and W1/4 corners were obtained in 1993 by either direct RTK GPS observations on the corner monuments or from very shot traverse work from RTK GPS points set near the corner monuments. The coordinate value of the E1/4 corner was obtained by RTK GPS direct on the monument on 01/16/2010. The coordinate value of the SE corner was obtained measuring very shot offsets from RTK GPS control points on 01/17/2010. The CE 1/16th and the SE 1/16th corners were set using RTK GPS equipment.

Coordinates shown are Langlade County Coordinates.
Bearings shown are Langlade County Coordinate System grid bearings.

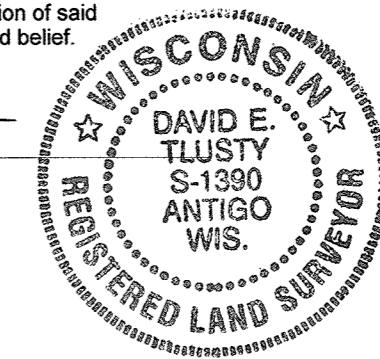
- 3/4" x 30" rebar set
- 3/4" rebar found

#	N	E	Description
101	416798.77	659969.11	N1/4x s16 x on rock
27	414112.78	657314.15	W 1/4 corner RTK on mon found
185	414115.60	659973.25	calculated center of Sec. 16
158	414117.01	661312.69	CE 1/16th rebar set
142	414118.43	662652.13	rtk ave e1/4xs16 alum mon fnd
186	412789.39	659975.30	rebar fnd
162	412787.92	661319.27	SE 1/16th rebar set
105	411463.20	659977.34	S1/4x s16 x on rock fnd
184	411454.45	662674.37	RTK sec cor mon found
90	414910.78	659686.49	CP REBAR Set south side logging road
137	412216.43	660795.01	CP rebar set in wildlife opening

I, David E. Tlusty, Langlade County Surveyor, do hereby certify that by the direction of Steve Jackson, Langlade County Forest Administrator, I have made a survey of part of Section 16, T.33 N., R.12 E., Town of Ainsworth, as shown hereon. I further certify that this map is a true and correct representation of said survey, and that this survey is correct to the best of my knowledge and belief.

January 19, 2012

David E. Tlusty
David E. Tlusty, S-1390
Langlade County Surveyor



RECORD #: 30589
LANGLADE COUNTY SURVEYORS OFFICE
DATE FILED: 1/20/12 BY: D. Tlusty

THIS DOCUMENT WAS CREATED ON LANGLADE COUNTY COMPUTER EQUIPMENT THAT WAS PURCHASED WITH THE ASSISTANCE OF A GRANT RECEIVED FROM THE WISCONSIN LAND INFORMATION BOARD.

LANGLADE COUNTY
LAND RECORDS & REGULATIONS DEPARTMENT

NO.	DATE	DESCRIPTION	BY
1			

SCALE: 1" = 500'

DRAWN BY: D. TLUSTY

PacSoft prj: AINSOUTH Fb 13-37

DATE: 01/18/2012

TOWN OF: AINSWORTH

TOWN CODE:

LOCATION:

SECTION: 16

TOWNSHIP: 33

RANGE: 12

DWG. #: ..163312