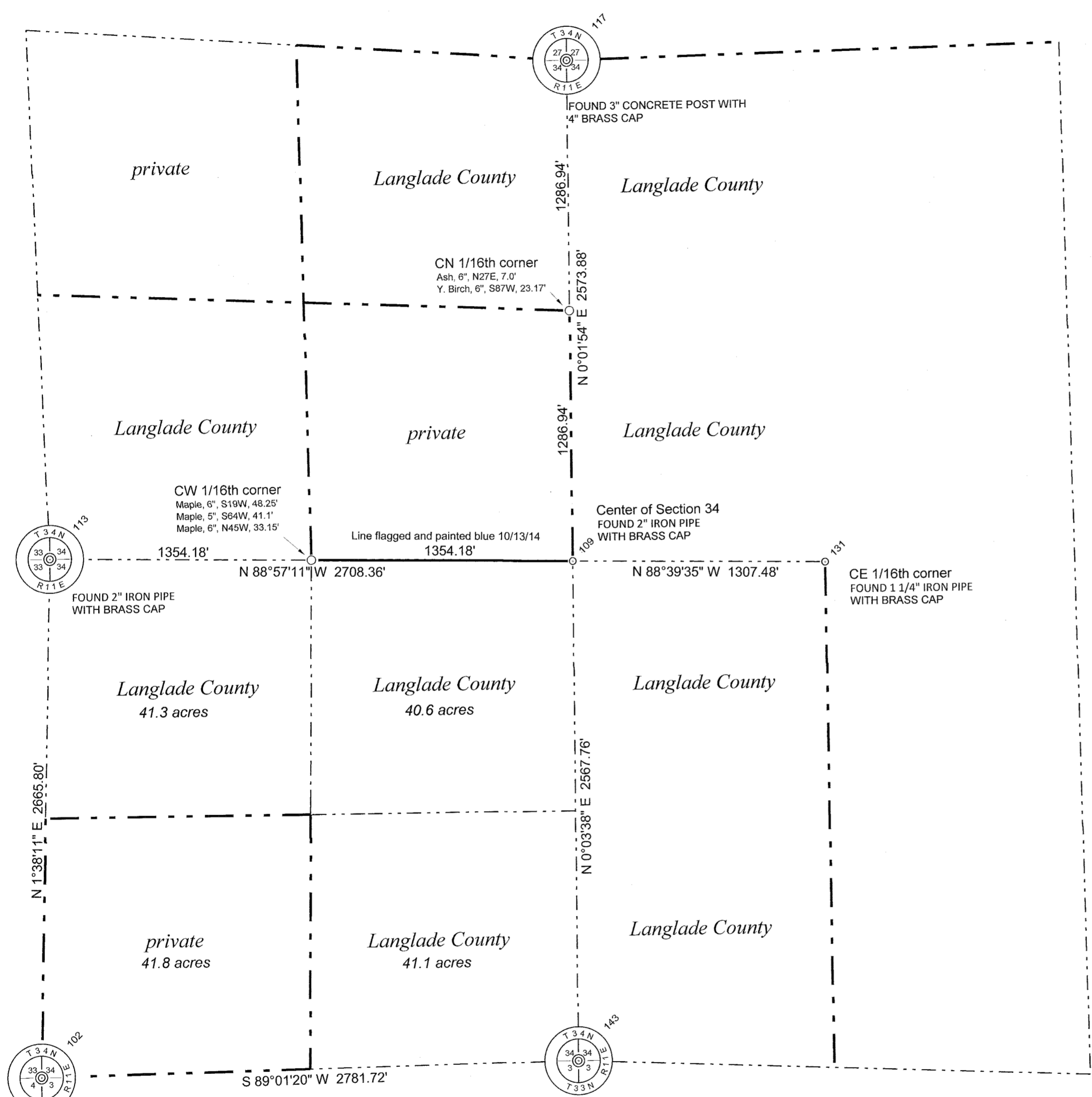


Section 34, Township 34 North, Range 11 East

LANGLADE COUNTY COORDINATE SYSTEM GRID BEARINGS SHOWN



**LEGEND**  
 ○ 1" x 30" iron pipe set flush and marked with steel channel post with Forest Boundary sign  
 — County Forest Boundary surveyed and marked  
 - - - County Forest Boundary  
 Dist. to alum nail in low side blaze.  
 Trees painted blue with BT sign.

LANGLADE COUNTY COORDINATE SYSTEM NAD83(2011)  
 PNO N E DESC  
 102 427705.26 630569.62 IP FND SECCOR 2XRTK  
 109 430320.49 633353.65 IPBCFND 2XRTK  
 113 430369.98 630645.74 IP BC 2XRTKAVE  
 117 432894.37 633355.07 BC IN CONC PILLAR3XRTKAVE  
 131 430297.52 634660.93 IPBC FND 16X 2XRTK  
 143 427752.73 633350.94 IPBC FND QC 3XRTK  
 The above listed coordinates are derived from multiple GNSS observations.

I, David E. Tlusty, Langlade County Surveyor, do hereby certify that, by the direction of the Langlade County Forestry Department, I have made a survey of part of Section 34, T.34 N., R.11 E., Town of Elcho, as shown hereon. I further certify that this map is a true and correct representation of said survey, and that this survey is correct to the best of my knowledge and belief. Corner restoration forms are on file for all monumented corners shown.

Oct. - Nov. 2014

David E. Tlusty, S-1390  
 Langlade County Surveyor  
 12/14/14  
**WISCONSIN**  
**DAVID E. TLUSTY**  
 S-1390  
 Deerbrook  
 WI  
 LAND SURVEYOR

RECORD # 30601  
 LANGLADE COUNTY SURVEYORS OFFICE  
 DATE FILED: 2/10/15 BY: D. Tlusty

NO.	DATE	DESCRIPTION	BY	REVISIONS

THIS DOCUMENT WAS CREATED ON LANGLADE COUNTY COMPUTER EQUIPMENT THAT WAS PURCHASED WITH THE ASSISTANCE OF A GRANT RECEIVED FROM THE WISCONSIN LAND INFORMATION BOARD.  
**LANGLADE COUNTY**  
 LAND RECORDS & REGULATIONS DEPARTMENT

SCALE: 1" = 500'
DRAWN BY: D. TLUSTY
REF. FILE: pt file "GIS3411"
DATE: Nov. 2014
TOWN OF: ELCHO
TOWN CODE:
LOCATION:
SECTION: 34
TOWNSHIP: 34
RANGE: 11
DWG. #: ..343411