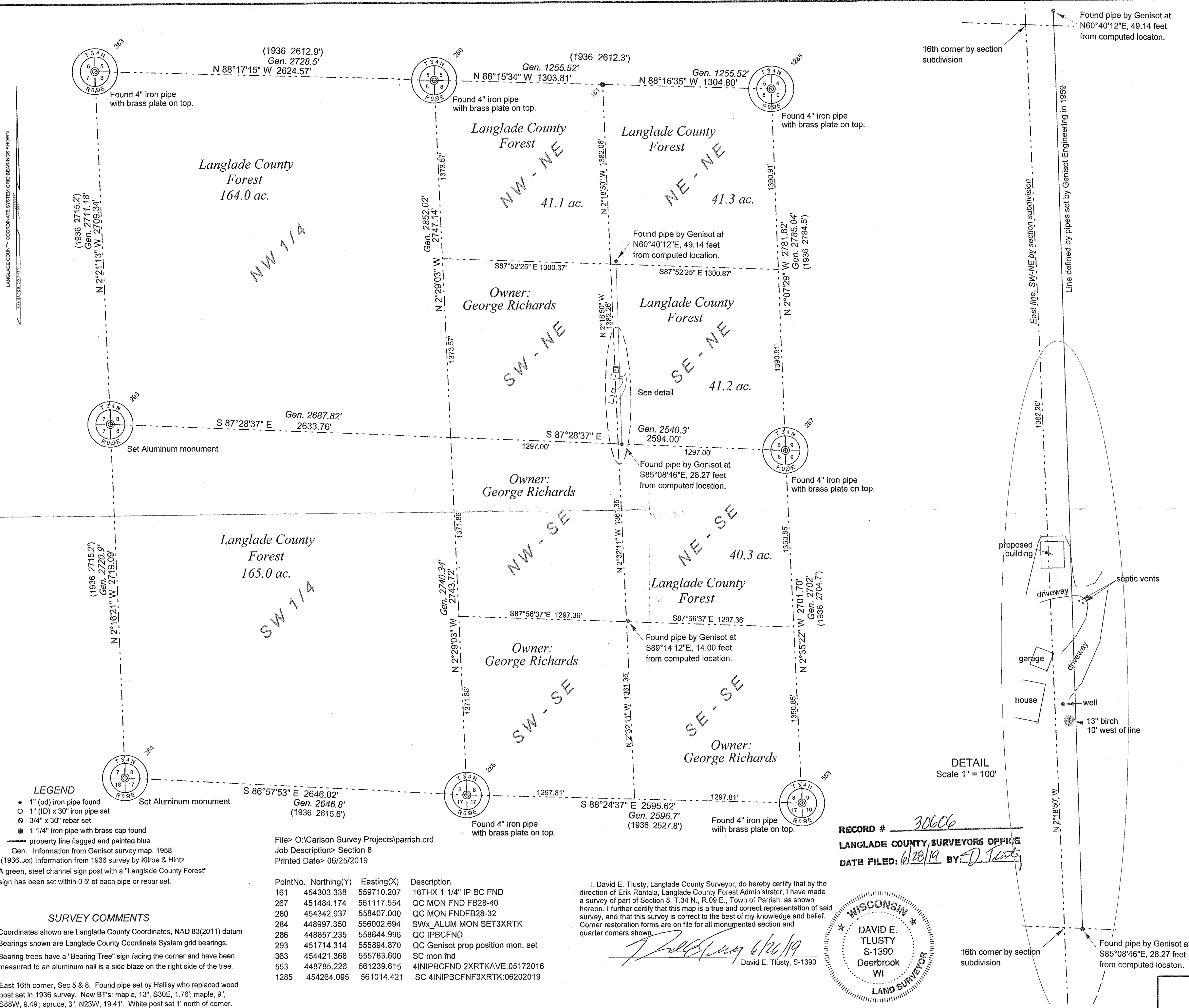


LANGLADE COUNTY COORDINATE SYSTEM GRID BEARINGS SHOWN



NO.	DATE	DESCRIPTION	BY
1	XX		dt

THIS DOCUMENT WAS CREATED ON LANGLADE COUNTY COMPUTER EQUIPMENT THAT WAS PURCHASED WITH THE ASSISTANCE OF A GRANT RECEIVED FROM THE WISCONSIN LAND INFORMATION BOARD.

LANGLADE COUNTY

LAND RECORDS & REGULATIONS DEPARTMENT

SCALE:	1" = 500'
DRAWN BY:	D. TLUSTY
REF. FILE:	
DATE:	06/20/2019
TOWN OF:	PARRISH
TOWN CODE:	
LOCATION:	
SECTION:	8
TOWNSHIP:	34
RANGE:	09
DWG. #:	.083409

LEGEND

- 1" (od) iron pipe found
- 1" (ID) x 30" iron pipe set
- ⊙ 3/4" x 30" rebar set
- ⊙ 1 1/4" iron pipe with brass cap found
- property line flagged and painted blue
- Gen. Information from Genisot survey map, 1958 (1936..xx) Information from 1936 survey by Kilroe & Hintz
- A green, steel channel sign post with a "Langlade County Forest" sign has been set within 0.5' of each pipe or rebar set.

SURVEY COMMENTS

Coordinates shown are Langlade County Coordinates, NAD 83(2011) datum
 Bearings shown are Langlade County Coordinate System grid bearings.
 Bearing trees have a "Bearing Tree" sign facing the corner and have been measured to an aluminum nail is a side blaze on the right side of the tree.
 East 16th corner, Sec 5 & 8. Found pipe set by Hallisy who replaced wood post set in 1936 survey. New BT's: maple, 13", S30E, 1.76"; maple, 9", S88W, 9.49"; spruce, 3", N23W, 19.41". White post set 1' north of corner.

File> O:\Carlson Survey Projects\parrish.crd
 Job Description> Section 8
 Printed Date> 06/25/2019

PointNo.	Northing(Y)	Eastng(X)	Description
161	454303.338	559710.207	16THX 1 1/4" IP BC FND
267	451484.174	561117.554	QC MON FND FB28-40
280	454342.937	558407.000	QC MON FND FB28-32
284	448997.350	556002.694	SWx_ALUM MON SET3XRTK
286	448857.235	558644.996	QC IPBCFND
293	451714.314	555894.870	QC Genisot prop position mon. set
363	454421.368	555783.600	SC mon fnd
553	448785.226	561239.615	4INIPBCFND 2XRTKAVE:05172016
1285	454264.095	561014.421	SC 4INIPBCFNF3XRTK:06202019

I, David E. Tlusty, Langlade County Surveyor, do hereby certify that by the direction of Erik Rantala, Langlade County Forest Administrator, I have made a survey of part of Section 8, T.34 N., R.09 E., Town of Parrish, as shown hereon. I further certify that this map is a true and correct representation of said survey, and that this survey is correct to the best of my knowledge and belief. Corner restoration forms are on file for all monumented section and quarter corners shown.

David E. Tlusty
 David E. Tlusty, S-1390

RECORD # 30606
 LANGLADE COUNTY SURVEYORS OFFICE
 DATE FILED: 6/20/19 BY: D. Tlusty



DETAIL
 Scale 1" = 100'