

I, David E. Tlusty, Langlade County Surveyor, do hereby certify that this map has been prepared to show the establishment of the Quarter corner between Sections 10 & 11, Township 34 North, Range 11 East, Langlade County, Wisconsin.

As shown on a corner form dated 7/12/71 by Robert Poss, S-0001, he accepted an iron pipe that was previously set by a surveyor Duchac in 1929. I believe that Duchac didn't have records of the proper corner previously established by Dorr, and used by Hutchinson in 1914, and also used by Weby in subdividing the SE quarter of Section 10 in 1924. It is obvious that Duchac set the Quarter corner by single proportionate measurement between adjoining section corners.

The correct quarter corner location as shown on this map was established by extending a line starting at the center of Section 10 (which I reset from a stump mentioned by Weby in 1914), easterly through a recovered monument (pump point set by Weby in 1914) at the CE 1/16 corner and using the same distance measured between these two corners. The quarter corner established by this method: falls on the extended centerline of Pratt Road to the north; is in agreement East & West within 2.3 feet of a 1926 distance to the East 1/4 corner of Section 11 as shown in FB 107, Pg. 29; is in agreement North & South within 6 feet of a 1914 distance (Hutchinson, FB 122, Pg. 67) to the MC to the South of here; and is in agreement North & South within 5 feet if a distance shown by Dorr (FB 131, Pg. 42) to the MC to the South of here.

Although Dorr indicated that this corner was a stone in the road, it appears that, with all the stones and boulders lying on the ground along the east edge of the road, work was done to rebuild the road and the stone was destroyed.

Most of the measurements shown hereon are from traverse work by Thomas Arnott, S-887. See also map #40156 for detail of traverse from center of Section 10 to East 1/4 corner of Section 10.

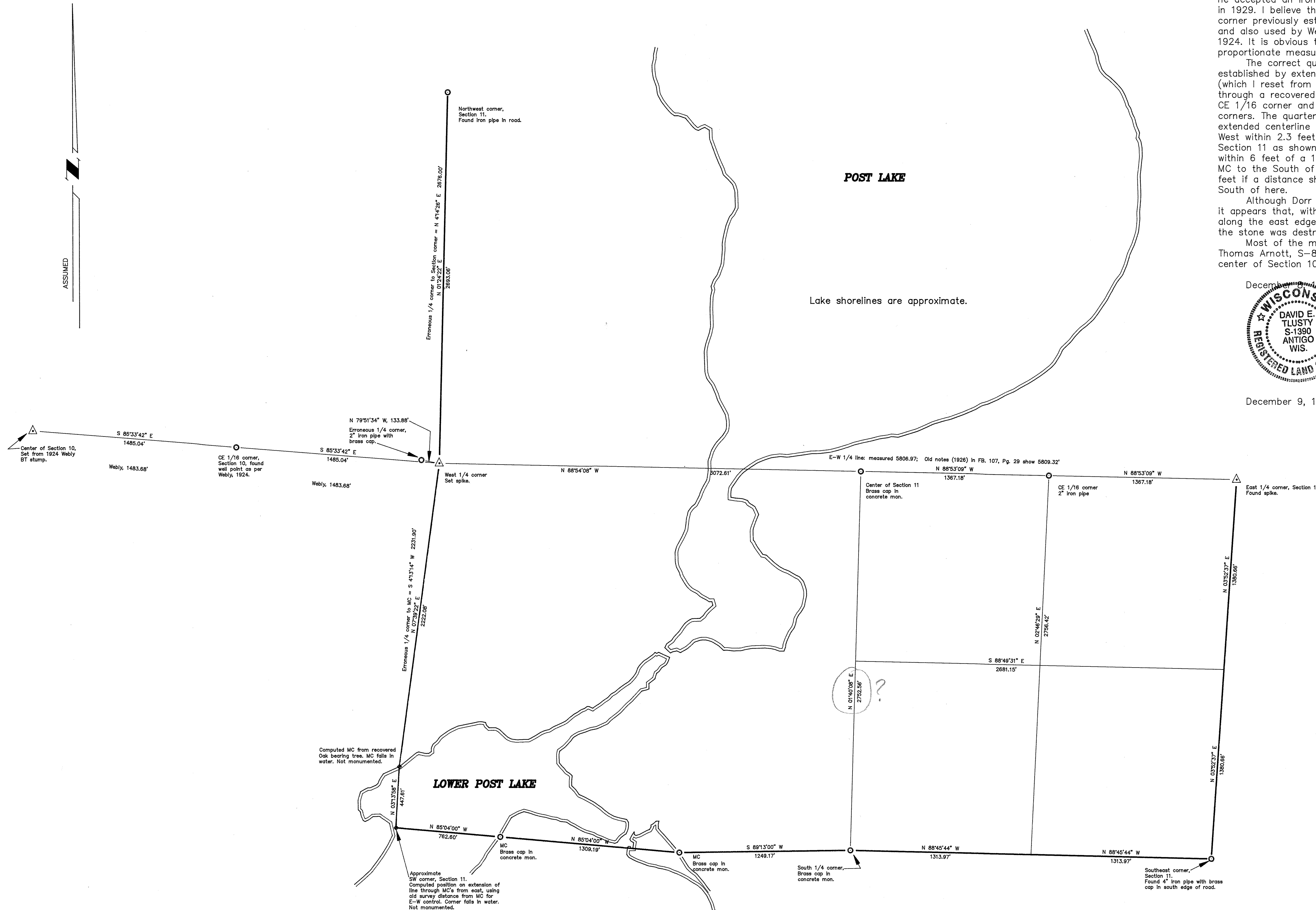
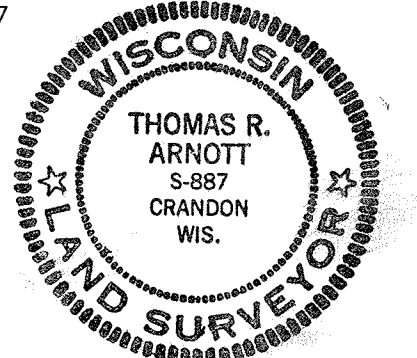
December 9, 1993



*David E. Tlusty*  
David E. Tlusty, S-1390  
Langlade County Surveyor

December 9, 1993

*Thomas Arnott*  
Thomas Arnott, S-887



NO.	DATE	DESCRIPTION	BY

THIS DOCUMENT WAS CREATED ON LANGLADE COUNTY COMPUTER EQUIPMENT THAT WAS PURCHASED WITH THE ASSISTANCE OF A GRANT RECEIVED FROM THE WISCONSIN LAND INFORMATION BOARD.

## LANGLADE COUNTY

### LAND RECORDS & REGULATIONS DEPT.

TITLE:  
MAP SHOWING RELOCATION OF WEST 1/4 CORNER OF SEC. 11-34-11. BASED ON FIELD WORK BY D. TLUSTY & T. ARNOTT.

REF. FILE:	SCALE: 1" = 400'
DRWN BY: DT	DATE: 11/30/93
	DWG. #: POST2

RECORD # 40157  
LANGLADE COUNTY SURVEYORS OFFICE  
DATE FILED: 12/15/93 BY: DT