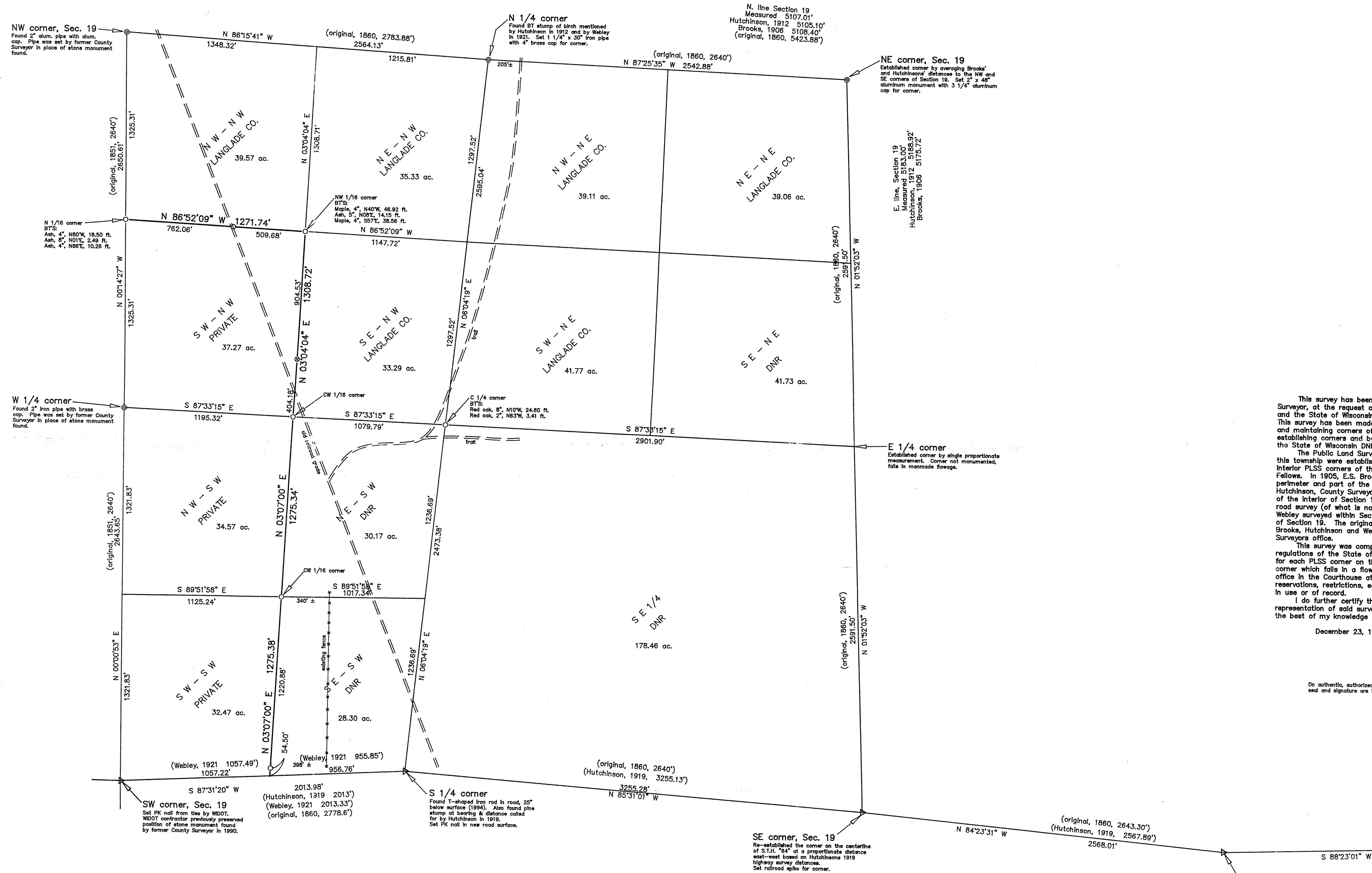


Section 19, T. 31 N., R. 9 E.



This survey has been made by David E. Tlusty, Langlade County Surveyor, at the request of the Langlade County Forestry Department and the State of Wisconsin, Department of Natural Resources (DNR). This survey has been made for the purpose of recovering, establishing and maintaining corners of the Public Land Survey System, and for establishing corners and boundaries of lands of Langlade County and the State of Wisconsin DNR.

The Public Land Survey System (PLSS) corners on the West line of this township were established in 1851 by James W. Morley. The interior PLSS corners of this township were set in 1860 by Hiram C. Fellers. In 1905, E.S. Brooks, County Surveyor, surveyed part of the perimeter and part of the interior of Section 19. In 1912, Malcolm Hutchinson, County Surveyor, surveyed part of the perimeter and part of the interior of Section 19. In 1914, Malcolm Hutchinson made a road survey (of what is now S.T.H. #64) for the State of Iowa. A web survey within Section 19 and subdivided the southwest quarter of Section 19. The original government survey notes and the notes of Brooks, Hutchinson and Webley are filed in the Langlade County

This survey was completed in compliance with the rules and regulations of the State of Wisconsin. A Land Corner Restoration form for each PLSS corner on the perimeter of Section 19 (except the E1/4 corner which falls in a flowage) is on file in the County Surveyors office in the Courthouse at Antigo, WI. Survey subject to exceptions, reservations, restrictions, easements and highway conveyances, if any, in use or of record.

I do further certify that this map is a true and correct representation of said survey made, and that this survey is correct to the best of my knowledge and belief.

December 23, 1997, 
David E. Tlusty
Wisconsin Registered Land Surveyor S-1390
Langlade County Surveyor

On authentic, authorized copies, the surveyors seal and signature are in red ink.

SE corner, Sec. 20 —
Set PK nail from ties by WIDOT.
WIDOT contractor previously preserved
position of corner previously perpetuated
by former County Surveyor in 1990.

RECORD # 40357
 LANGLADE COUNTY SURVEYORS OFFICE
 DATE FILED: 2/3/02 BY: D. G. [Signature]

TITLE:
BOUNDARY SURVEY FOR LANGLADE
COUNTY FORESTRY DEPT. AND WISCONSIN
DEPT. OF NATURAL RESOURCES.
PART OF SECTION 19, T. 31 N., R. 9 E.,
TOWN OF ACKLEY, LANGLADE COUNTY, WI.

REF. FILE:	SCALE: 1" = 400'
DRWN BY: D. Tlusty	DATE: 10/15/97
	DWG. #: A2010015

LANGLADE COUNTY
LAND RECORDS & REGULATIONS DEPT.

LEGEND

- 1" X 30" iron pipe set
- ⊗ 3/4" X 30" rebar set

NOTES:
Acreage shown on the SW-SW, the SE-SW and the SE 1/4
of Section 19, include land that has been deeded to the
State of Wisconsin, Department of Transportation.

1/98
FINAL
AS MAILED
TO FREEDOM
OF INFORMATION
2 TRACKERS
SOLAS
M. LAURIN