

177541

REGISTER'S OFFICE
Langlade County, Wis.Received for record this 23 day
of April A. D. 1953 at
3:00 o'clock P. M. and recorded
in Vol. D of Plats
on page 37
Al H. Kubiah
REGISTER OF DEEDS

PERCH LAKE PLAT

IN THE N.E. 1/4-S.W. 1/4 AND THE N.W. 1/4-S.E. 1/4
SECTION 36, T.34N., R.11E. OF THE 4TH P.M., EL-
CHO TOWNSHIP, LANGLADE COUNTY, WISCONSIN.

SCALE 1 INCH = 100 FEET

SURVEYOR'S CERTIFICATE

I HEREBY CERTIFY THAT I HAVE SURVEYED, SUBDIVIDED AND PLATTED THE LAND SHOWN ON THIS MAP, BY ORDER OF THE FORESTRY COMMITTEE OF LANGLADE COUNTY, WIS., SAID COUNTY BEING THE OWNER OF THE LAND. THE LAND INCLUDED IN THIS PLAT IS A PART OF THE N.E. 1/4-S.W. 1/4 AND A PART OF THE N.W. 1/4-S.E. 1/4 SECTION 36, T.34N., R.11E. AND MORE FULLY DESCRIBED AS FOLLOWS:- STARTING AT A POINT ON THE EAST SHORE OF PERCH LAKE MARKING THE INTERSECTION WITH THE EAST-WEST 1/4 LINE OF SECTION 36, SAID POINT BEING N.87°44'W. OF AND 542.14 FEET DISTANT FROM THE NORTHEAST CORNER OF THE N.W. 1/4-S.E. 1/4 SECTION 36, THENCE S.87°44'E. ALONG SAID E-W 1/4 LINE A DISTANCE OF 226.0 FEET, THENCE S.11°26'W. FOR 475.0 FEET, THENCE S.7°26'W. FOR 340.0 FEET, THENCE S.42°16'W. FOR 163.0 FEET, THENCE S.72°16'W. FOR 260.0 FEET, THENCE S.82°16'W. FOR 355.0 FEET, THENCE N.81°59'W. FOR 360.4 FEET, THENCE N.31°23'W. FOR 242.0 FEET, THENCE N.2°23'W. FOR 106.0 FEET, THENCE N.5°51'E. FOR 175.0 FEET, THENCE N.22°09'W. FOR 160.0 FEET, THENCE N.46°09'W. FOR 208.0 FEET, THENCE N.21°09'W. FOR 140.0 FEET, THENCE N.12°09'W. A DISTANCE OF 158.0' TO A POINT INTERSECTING THE EAST-WEST 1/4 LINE OF SEC. 36, THENCE S.87°44'E. ALONG SAID 1/4 LINE A DISTANCE OF 219.25 FEET TO A POINT ON THE WESTERLY SHORE OF PERCH LAKE, THENCE SOUTHEASTERLY, SOUTHERLY, EASTERLY AND NORTHERLY ALONG THE SHORE OF PERCH LAKE TO THE POINT OF BEGINNING.

SHORE MEANDER LINE IS AS FOLLOWS:- BEGINNING ON THE NORTH LINE OF LOT 1 AT A POINT 28.0 FEET FROM THE HIGH WATER MARK, THENCE S.13°30'W. 100.0 FEET, S.17°12'W. 95.1 FEET, S.17°39'W. 98.44 FEET, S.21°19'W. 98.3 FEET, S.20°58'E. 97.0 FEET, S.17°26'W. 99.0 FEET, S.4°57'E. 99.43 FEET, S.10°43'E. 72.6 FEET, S.58°23'W. 25.0 FEET, S.77°51'W. 100.0 FEET, S.63°35'W. 100.0 FEET, N.87°48'W. 40.0 FEET, N.88°48'W. 100.0 FEET, S.83°47'W. 61.0 FEET, S.77°39'W. 39.0 FEET, S.80°24'W. 100.0 FEET, N.82°26'W. 100.0 FEET, N.79°41'W. 95.5 FEET TO MEANDER CORNER AT INTERSECTION OF NORTH-SOUTH 1/4 LINE SEC. 36, THENCE S.75°38'W. 63.2 FEET, N.20°01'W. 154.0 FEET, N.4°05'W. 100.0 FEET, N.14°30'E. 100.0 FEET, N.8°07'W. 100.0 FEET, N.20°01'W. 70.0 FEET, N.49°10'W. 30.0 FEET, N.49°10'W. 100.0 FEET, N.46°00'W. 100.0 FEET, N.26°29'W. 100.0 FEET, N.8°52'W. 85.0 FEET, THENCE N.33°03'W. 43.0 FEET ON MEANDER LINE TO A POINT INTERSECTING THE NORTH LINE OF LOT 23, 21.0 FEET FROM THE HIGH WATER MARK.

THAT THIS MAP IS A CORRECT REPRESENTATION OF ALL BOUNDARIES OF LAND SURVEYED AND PLATTED AND THAT IN SURVEYING, SUBDIVIDING AND PLATTING THE SAME I HAVE FULLY COMPLIED WITH CHAPTER 236 OF THE WISCONSIN STATUTES.

2" X 30" IRON PIPE ARE DENOTED ON THE MAP WITH A °

Forest R. Wingentsen
GENISOT ENGINEERING CO.
BY F.R. WINGENTSEN, SURVEYOR

STATE OF WISCONSIN
ONEIDA COUNTY

PERSONALLY CAME BEFORE ME THIS 21st DAY OF JANUARY A.D. 1953, THE ABOVE NAMED FOREST R. WINGENTSEN, TO ME KNOWN TO BE THE PERSON WHO EXECUTED THE FOREGOING INSTRUMENT AND ACKNOWLEDGED THE SAME.

Joseph B. Kirby
NOTARY PUBLIC, ONEIDA COUNTY, WIS.
MY COMMISSION EXPIRES May 6, 1956

APPROVED BY THE DIRECTOR OF REGIONAL PLANNING THIS 17th DAY OF February A.D. 1953.

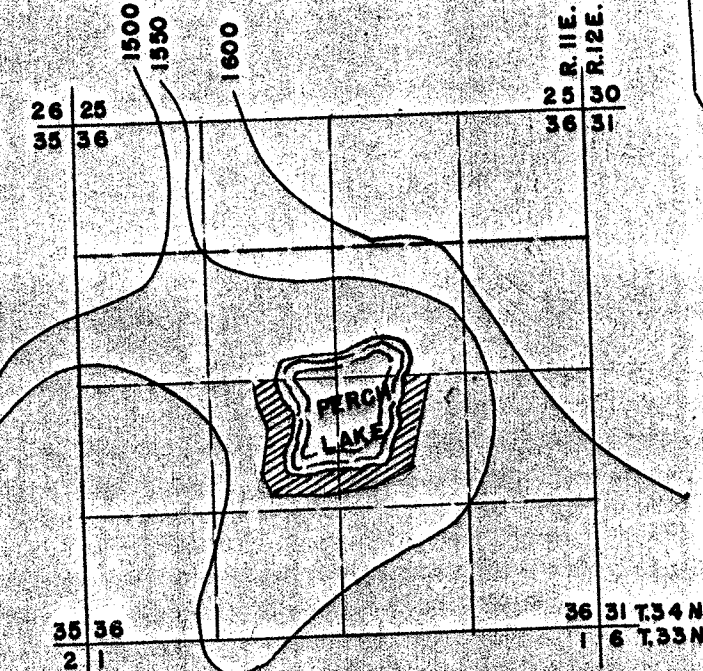
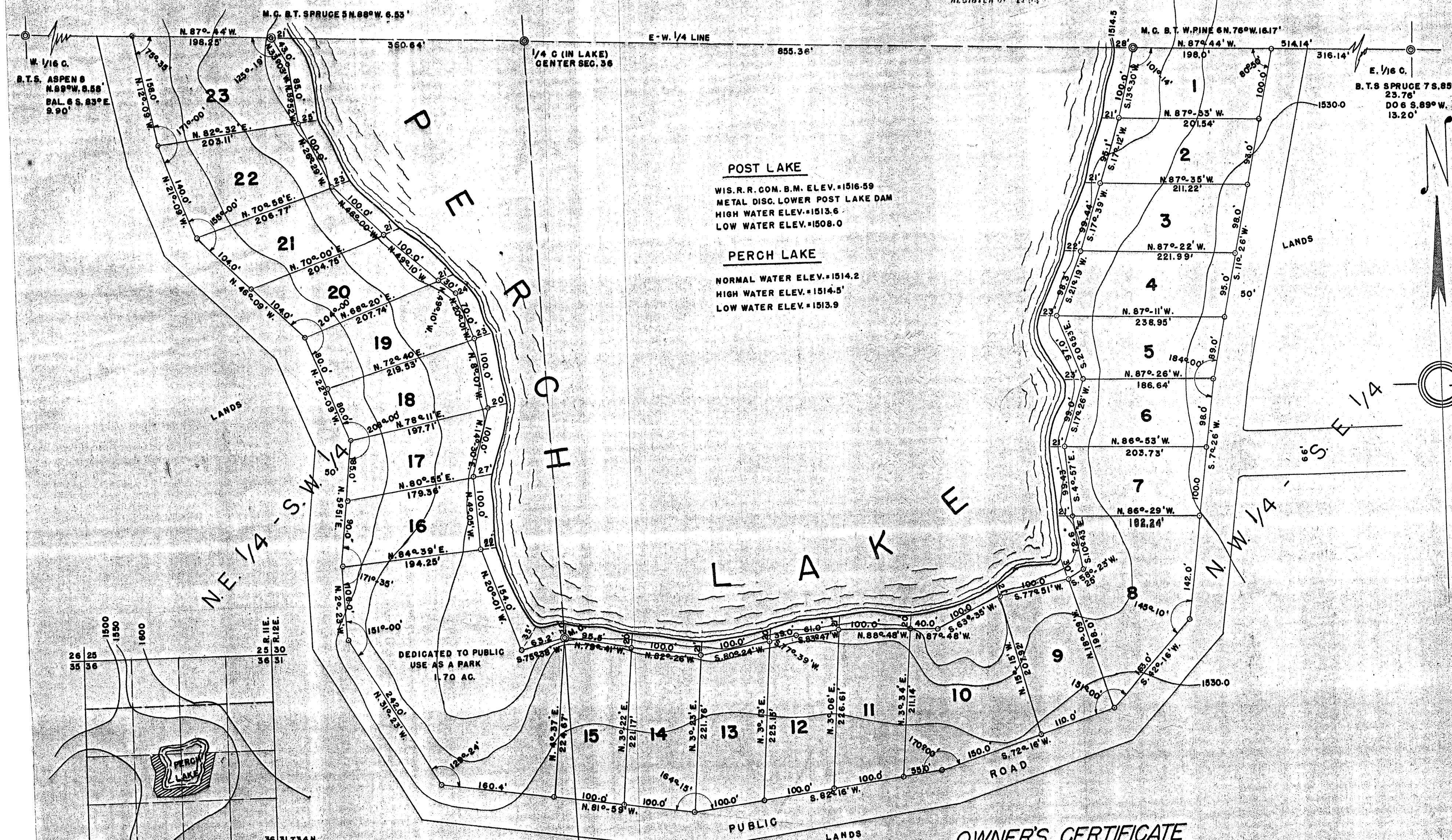
M. W. Torkelson
1/17/53

STATE DIRECTOR OF REGIONAL PLANNING

APPROVED BY THE WISCONSIN STATE BOARD OF HEALTH THIS 10th DAY OF February A.D. 1953.

EXAMINED BY *Walter R. Jensen*
STATE DOMESTIC SANITARY ENGINEER

APPROVED BY *Carl N. Newburt, M.D.*
STATE HEALTH OFFICER



RESOLVED BY THE TOWN BOARD OF ELOHO TOWNSHIP, LANGLADE COUNTY, WISCONSIN THAT THE PLAT KNOWN AS "PERCH LAKE PLAT" BE, AND THE SAME IS HEREBY APPROVED.

Lois M. Palmer
CHAIRMAN

STATE OF WISCONSIN
LANGLADE COUNTY

I, LEONE SINDBERG, BEING THE TOWN CLERK OF ELOHO TOWNSHIP IN LANGLADE COUNTY, WISCONSIN, HEREBY CERTIFY THAT THE ABOVE RESOLUTION WAS ADOPTED BY THE TOWN BOARD OF ELOHO TOWNSHIP ON THE 14 DAY OF March A.D. 1953.

Leone Sindberg
TOWN CLERK, ELOHO TOWNSHIP

OWNER'S CERTIFICATE

THIS IS TO CERTIFY THAT LANGLADE COUNTY, WISCONSIN AS OWNER HAS CAUSED THE LAND DESCRIBED IN THE FOREGOING AFFIDAVIT OF FOREST R. WINGENTSEN, SURVEYOR, TO BE SURVEYED, DIVIDED AND DEDICATED AS SHOWN ON THIS MAP THAT THEY HAVE CAUSED THIS PLAT TO BE CALLED "PERCH LAKE PLAT" IN TESTIMONY WHEREOF THE FORESTRY COMMITTEE HAS CAUSED THE CHAIRMAN AND SECRETARY OF SAID COMMITTEE TO HEREUNTO SET THEIR HAND AND SEAL.

IN PRESENCE OF

Martin Strandberg
CHAIRMAN

Ira Goodell
SECRETARY

STATE OF WISCONSIN
LANGLADE COUNTY

PERSONALLY CAME BEFORE ME THIS 22nd DAY OF March A.D. 1953 THE ABOVE NAMED MARTIN STRANDBERG AND IRA GOODELL, TO ME KNOWN TO BE THE PERSONS WHO EXECUTED THE FOREGOING INSTRUMENT AND ACKNOWLEDGED THE SAME.

M. W. Torkelson
COUNTY CLERK
LANGLADE COUNTY, WISCONSIN